

#### Contributors to the guide



The NM Department of Homeland Security and Emergency Management also provided content and edits. Volunteers Ryan Weiss and Madeleine Carey assisted with many tasks.

Mary Stuever, Chama District Forester, NM Forestry Division

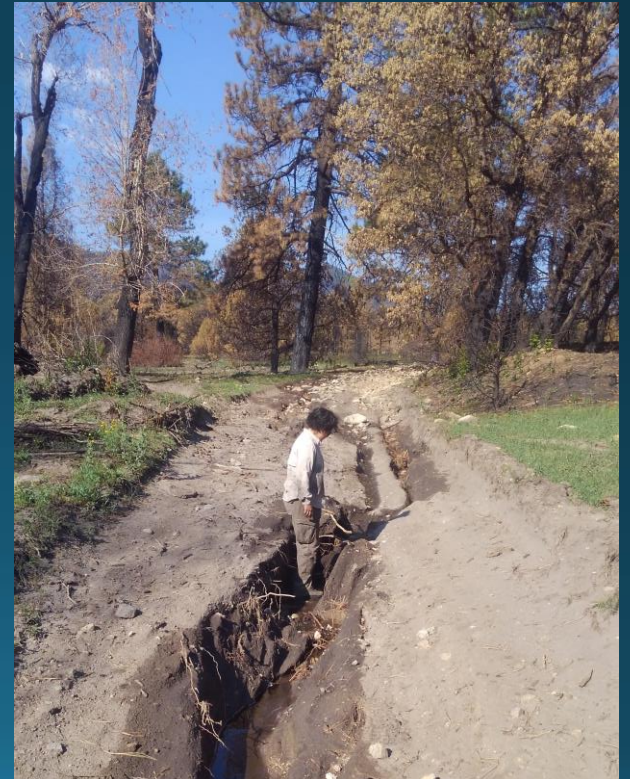


# AFTER WILDFIRE

A GUIDE FOR NEW MEXICO COMMUNITIES

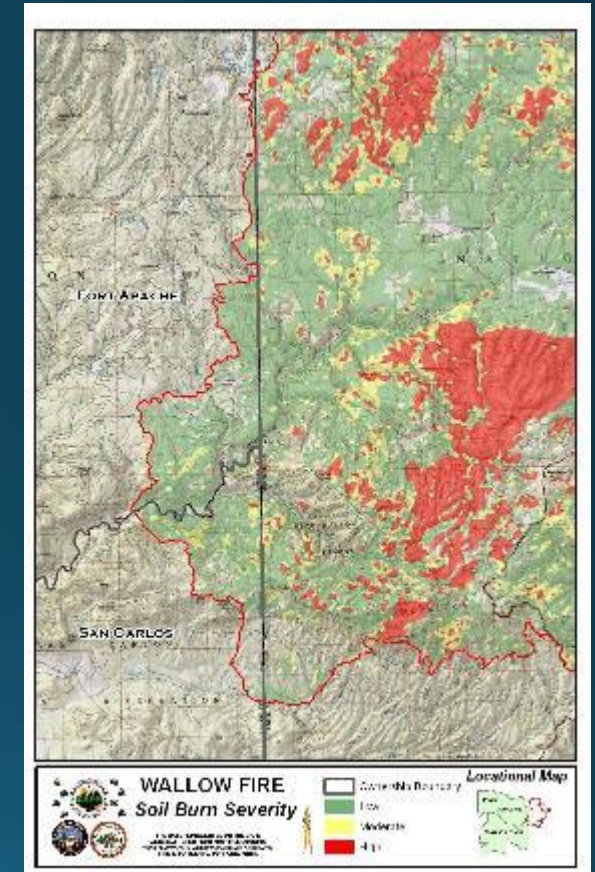
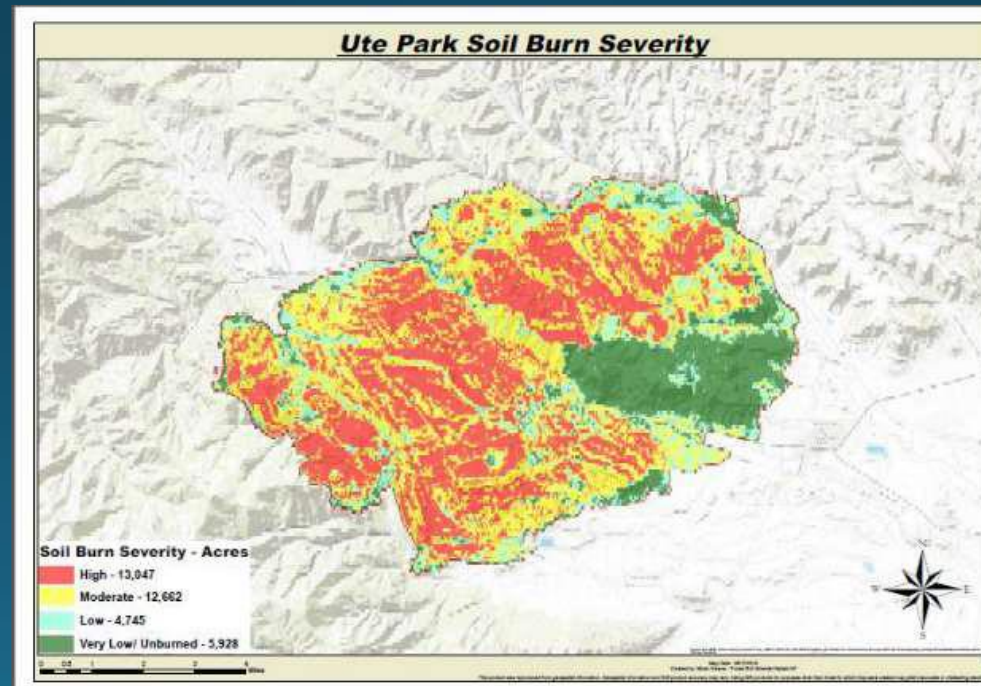
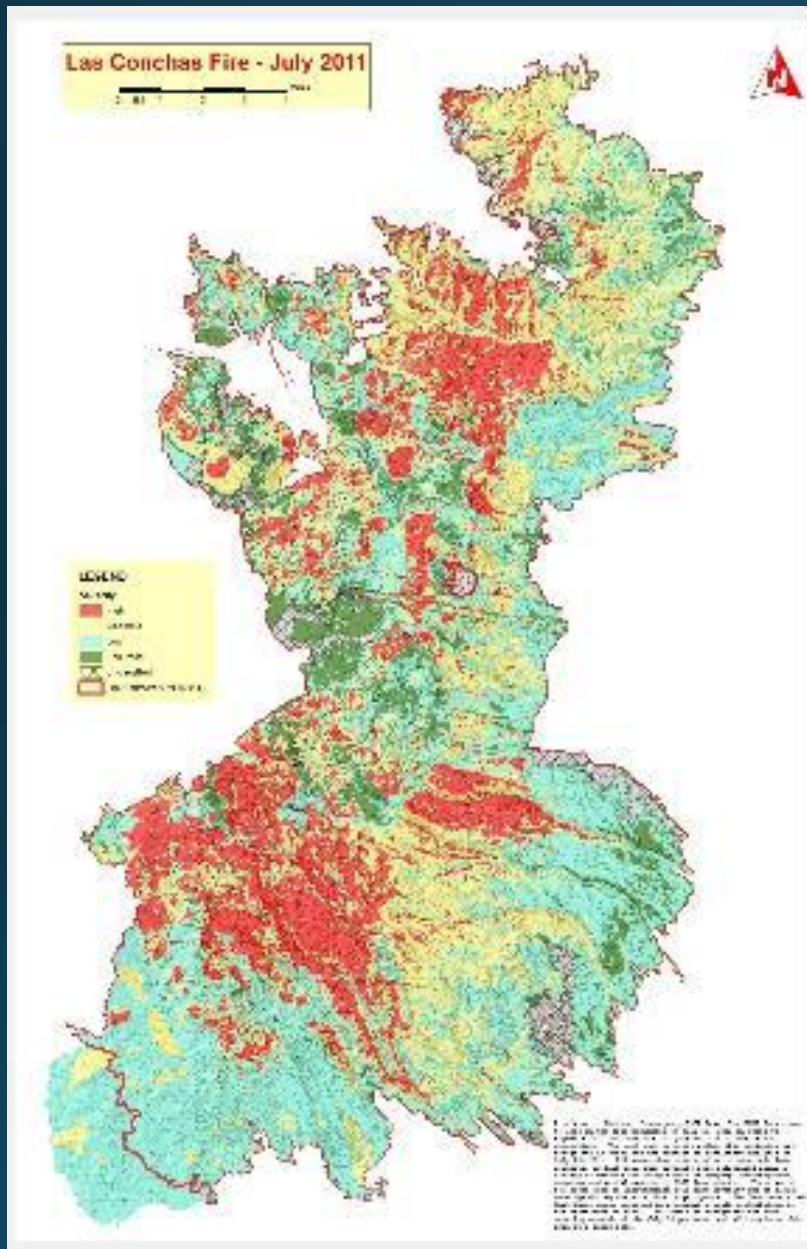
# Never-ending Story

- Fire INTENSITY is not the historic experience
- FLOODING is beyond normal
- DEBRIS FLOWS are dangerous and destructive
- Landscapes are transitioning to new conditions
- NEW PROBLEM without TRADITIONAL response mechanisms





# Soil Burn Severity Maps







## Fire Impacts

- Homes
- Outbuildings
- Businesses
- Trees & forests
- Other vegetation
  - Grazing potential
  - T & E species
- Archeological sites

# Impact on Individuals

- Insurance claims
- Rebuilding considerations
- Temporary housing
- Fences, Roads, etc.
- Short term support
- Long term support





# Impacts to Landscape

- Buildings
- Infrastructure
  - Roads
  - Fences
- Archeological sites
- Uplands
- Drainages



# Post Fire Change Agents

- Flooding
- Debris flows
- Erosion
- Soil damage & movement
- Revegetation challenges
  - Invasive plants
  - Time delay
  - Hotter, drier conditions
  - Soil lost





# Federal & Tribal Lands – Burn Area Emergency Response (BAER)

- Jurisdiction is generally clear
- Post-Fire specific funding is allocated
- Same agency bears responsibility across multiple disciplines impacted by post-fire conditions



# State & Private Lands – Post-Fire Response



- Jurisdiction is generally NOT clear
- Multi-agencies, government levels are impacted and has partial responsibilities
- NO Post-Fire specific funding is allocated, most support comes from other funding sources where post-fire response has been added to existing programs
- No single agency bears responsibility across multiple ownerships, disciplines, resources, etc. impacted by post-fire conditions



New Problem – Emerging Knowledge



# www.afterwildfirenm.org



The screenshot shows the homepage of the website [www.afterwildfirenm.org](http://www.afterwildfirenm.org). The browser's address bar and tabs are visible at the top. The website features a dark teal header with the logo "AFTER WILDFIRE" and the subtitle "A GUIDE FOR NEW MEXICO COMMUNITIES". A search bar and a "Log in" button are located in the top right corner. Below the header is a horizontal navigation bar with icons and labels for various sections: Immediate Safety, Mobilizing Your Community, Who Can Help?, Post-Fire Treatments, Financial Tips, Flood Information, and Additional Resources. The main content area is framed by large images of green plants on the left and right. The central text area includes a "Home" link, a "PRINT PAGE" button, and a featured article titled "Mobilize Your Community". This article includes a photograph of two women in a meeting and a brief description of the section's content. Below the featured article is a "Welcome to the After Wildfire Guide" section, which provides an overview of the guide's purpose and intended use.

afterwildfirenm.org

Apps Outlook Web App Oracle | PeopleSoft... Edit Post - NM Fire I... BRIT - Native Ameri... NAP - NESS Applica... My Profile - Zoom Employee Search |... Settings

 **AFTER WILDFIRE**  
A GUIDE FOR NEW MEXICO COMMUNITIES

Search Site Search Log in  
only in current section ☐

 Immediate Safety  Mobilizing Your Community  Who Can Help?  Post-Fire Treatments  Financial Tips  Flood Information  Additional Resources

Home

PRINT PAGE 



**Mobilize Your Community**

This section includes key points to help local governments and community leaders get started on recovery coordination, and provides information on items that are critical to consider when mobilizing your community's response after a wildfire.



**Welcome to the After Wildfire Guide**

Experiencing a destructive wildfire can be devastating. This guide was written to help New Mexico communities recover after wildfire. It includes information on how to mobilize your community, a list of resources available to communities and individuals for assistance, and a technical guide with information about post-fire treatments to address the catastrophic effects of a wildfire on the land and to prepare for potential flooding. If you are reading this guide before a wildfire occurs, use it to help you plan ahead.

This guide is intended to provide useful information during this difficult time, and to start you on the road to recovery.

# Contributors to the Guide

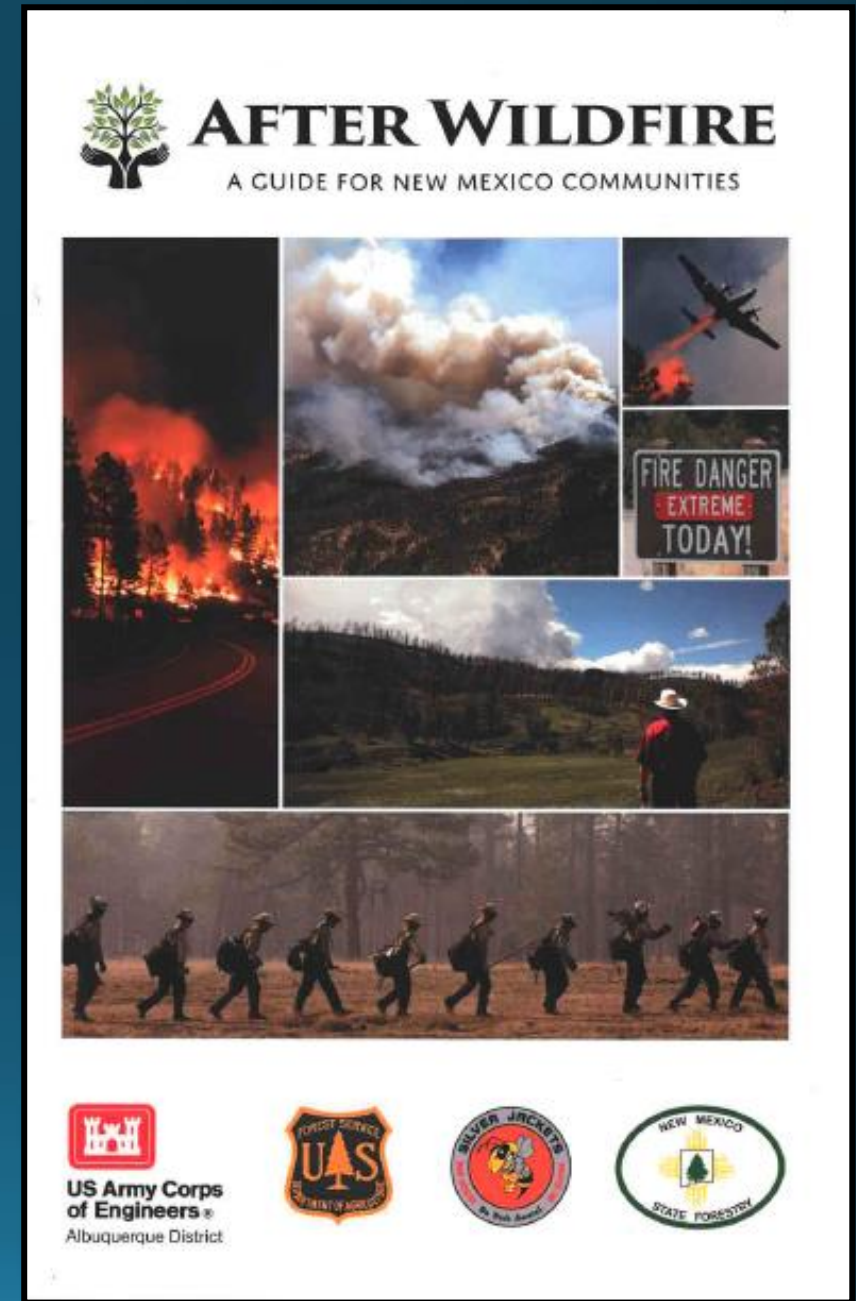
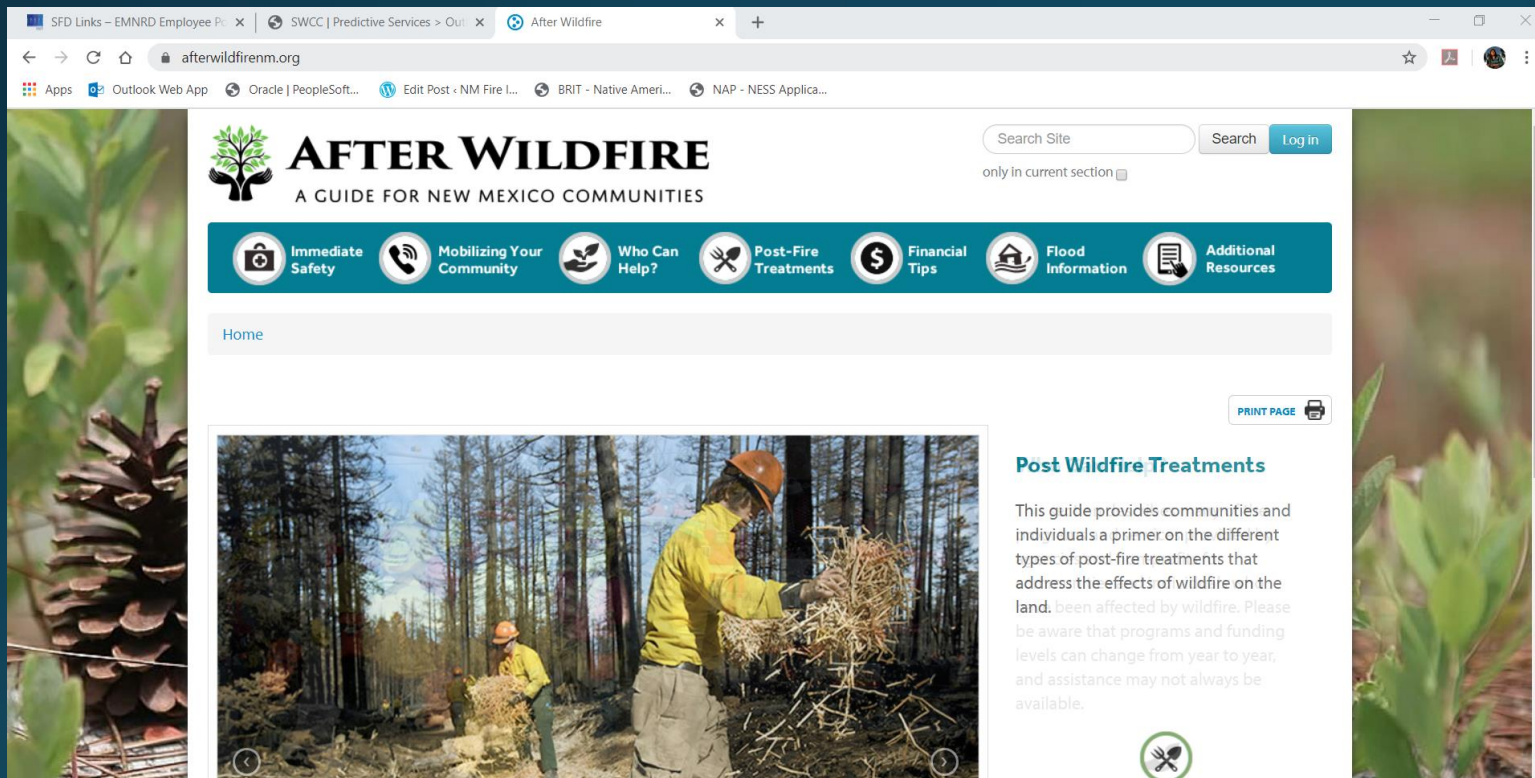


**New Mexico Department of  
Homeland Security and Emergency Management**

Volunteers: Ryan Weiss & Madeleine Carey



# Web & Print



# Audience

- Individuals
- Communities

## The Sections of the 'After Wildfire' Guide



**Immediate Safety**



**Mobilizing Your Community**



**Who Can Help**



**Post Fire Treatments**



**Financial Tips**



**Flood Information**



**Additional Resources**





# Immediate Safety



Photo: Courtesy of US Forest Service.



# Mobilizing Your Community

- How does a community best **work together** to respond?  
Communities that are organized can better recover together.
- Establishing a **Post-Fire Coordinator**.
- **Communication**, working with volunteers.



Photo: Courtesy of US Forest Service.





# Who Can Help?

- What financial and technical assistance is available to **communities, tribes and pueblos**?
- What assistance is available to **individuals and families**?
- Where can individuals, fire staff, and firefighters find **emotional support**?







# Post-Fire Treatments

- What can a community or landowner do on the **land** after a wildfire to assist with **recovery**?
- What are some methods to prepare for the threat of **post-fire flooding**?







## Short & Long term –

- Culvert cleaning
- Install low water crossings
- Acequias
- Roads
- Fences
- Power lines
- Dams
- Drainages

*Infrastructure Recovery*



List of upland goals –  
Reduce erosion  
Encourage  
infiltration  
Accelerate  
vegetation recovery

*Upland Treatments*





### *Drainage Treatments*

#### List of drainage goals

- Prevent large materials from moving down stream
- Slow energy
- Catch sediments
- Encourage infiltration higher in watershed
- Armor banks





# Financial Tips

- This section provides **financial tips for individuals** and about **funding considerations for communities** in a post-wildfire situation.







# Flood Information

- This section provides links and resources for how to **stay informed** about flood threats, and how to **prepare** and stay safe.
- Adapted from material from the USACE and the NM Department of Homeland Security and Emergency Management.







# Additional Resources

- This section provides links and resources to **other guides** and more **in-depth information**.
- It is also where you can download a **paper version** of the guide.
- If you are viewing this before a fire occurs, this section includes links to helpful **planning tools for wildfire**.





# Other States— Post-Fire Response Tools

Washington State –  
iBAER

Colorado –  
After the Flames  
Post-Fire Playbook



## AFTER WILDFIRE NM WEBSITE – USER INFORMATION

---

### 2018

- Total Visits: 101,756
- Countries: USA 69%, Canada 5%, France 4%, + 7 other countries.
- States: California 22%, New Mexico 11%, Colorado, 7% + 6 other states

### 2019

- Total Visits: 78,150
- Countries: USA 73%, Canada 4%, + 23 other countries
- States: Illinois 21%, California 16%, Virginia 5%, New Mexico 5%, hits from every state



# AFTER WILDFIRE NM WEBSITE – TOP PAGES

---

## 2018

- Home Page – 21%
- Floods following Wildfires – 5%
- Post Fire Treatments – 5%
- Assistance for Individuals & Families – 2%
- Who can help – 2%
- Debris Rack and Deflectors – 2%
- Additional Resources – 2%
- Rolling Dip/Water Bar – 2%

## 2019

- Floods Following Wildfires - 11%
- Home Page – 11%
- Post Fire Treatments – 4%
- Streambank Armoring – 3%
- Rolling Dip/Water Bar – 3%
- Erosion Barrier Applications – 3%
- Debris Rack and Deflectors – 3%
- Road and Trail Treatments - 2%

# Questions?

# [www.afterwildfirenm.org](http://www.afterwildfirenm.org)

Mary Stuever

[mary.stuever@state.nm.us](mailto:mary.stuever@state.nm.us)



# AFTER WILDFIRE

A GUIDE FOR NEW MEXICO COMMUNITIES

## Contributors to the guide



US Army Corps  
of Engineers  
Albuquerque District



The NM Department of Homeland Security and Emergency Management also provided content and edits. Volunteers Ryan Weiss and Madeleine Carey assisted with many tasks.