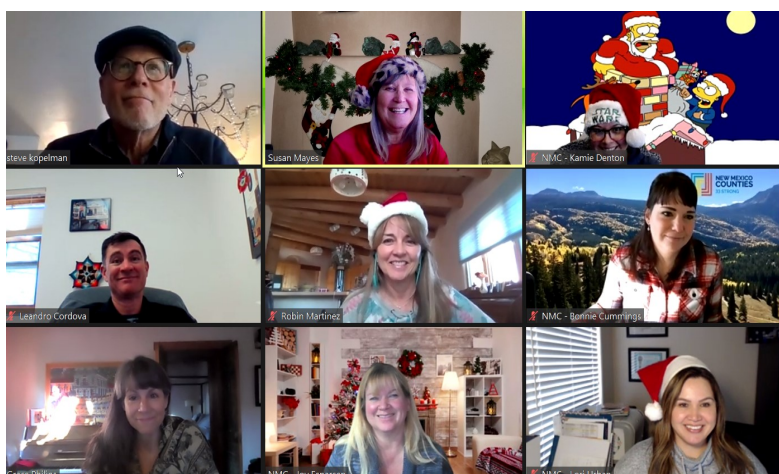




NM Counties staff wish all county members a safe and healthy Christmas and a better, brighter New Year 2021!



NMC
offices
closed
Dec. 24,
25, 31, &
Jan. 1.

BIPO Presentations to Commissioners

Newly elected and reelected county commissioners: Check out the NMC resources page on our website for BIPO presentations for your reference:

[2020 BIPO Presentations for Commissioners](#)

Individual presentation links:

[Ethics](#)

[HR for Commissioners](#)

[NMFA](#)

[Wrangling the Roundhouse](#)

[Intergovernmental Relations](#)

[Finance and Purchasing](#)

[Revenues and Fiscal Responsibility](#)

[Link to NMC Meetings](#) [Annual Calendar](#)
[Link to NMC Loss Prevention Trainings](#) [RSVP](#)

Mon Jan 18	Virtual NM EDGE classes 8:30 AM-4 PM
Mon Jan 19-21	Virtual NMC Legislative Conference
Tue Jan 19	NM EDGE classes 8:30 AM-4 PM Virtual NMCIA Membership meeting 9 AM-Noon Legislative 60-day Session opens Noon Virtual NMC Board of Directors meeting 2 PM
Wed Jan 20	Conference opening 8:30 AM-9:30 AM Workshop I—Cybersecurity 10-11:15 AM Workshop II—TBD 11:30-12:30 PM NM EDGE classes 1 PM-4 PM
Thu Jan 21	Affiliate meetings 8:30 AM-11:30 AM Closing session 11:45 AM-1 PM NM EDGE classes 1:30 PM-4:30 PM
Thu Jan 28	Executive Committee teleconference 11 AM
Thu Feb 4	Executive Committee teleconference 11 AM
Thu Feb 11	Executive Committee teleconference 11 AM
Thu Feb 18	Bill introduction deadline
Sat Feb 20	NMC Board of Directors meeting, 8:30 AM
Sat Feb 20-24	NACo Legislative Conference DC TBD
Thu Feb 25	Executive Committee teleconference 11 AM

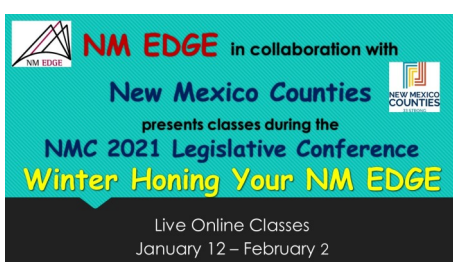
County elected officials and managers: Please consider a short PSA encouraging your community to get tested, catching asymptomatic spread, and reducing the positivity rate to help businesses open. Share your video with NMC and we will post on our FB page or tag us [@nmcounties33](#)

Our Goal is GREEN! Reduce restrictions in three easy steps

1. Mask up!
The easiest and most effective way to control spread is to wear a mask in public and around other non-household people. Share your MASK selfie, not the virus!
 2. Shop in a safe manner!
Send only one person to shop, wear your mask, and support local business as much as possible! Reduce your travel, too.
 3. GET TESTED!
New Mexico's framework is based on how many people are tested, and how many test positive. Catching asymptomatic spread, masking and safe shopping reduce our numbers, but we need more tests over all to bring down the positivity rate!
- Businesses are depending on us to get in the Green! Do your part to limit spread and reopen our local businesses!*



**New Mexico Counties
2021 Legislative Virtual Conference
REGISTRATION NOW OPEN!**
Fees reduced to \$75 for county members!



Click here to see the entire [Winter Roadmap](#) (schedule of classes)
NM EDGE classes begin January 12!
[COVID-19 Updates from NACo](#)

Tag us on FB & Twitter [@nmcounties33](#)
[www.facebook.com/pg/nmcounties33/posts](#)

County employment opportunities [here](#)

New Employee? Directory updates [here](#)

Did someone forward you this email? [Sign up](#)

Congress passes \$2.3 trillion appropriations and COVID relief package

The deadline to spend Coronavirus Relief Fund money moves to Dec. 31, 2021, additional funding was allocated for nutrition assistance, child care and rental assistance, along with new funding for the Payment Protection Program, unemployment benefits, vaccine distribution and COVID-19 testing.



Latest Economic Data for all 33 Counties

Highlights from the quarter (July-Sept 2020):

- Fourteen counties saw a year-over-year increase in matched taxable gross receipts, the state experienced 9% decrease; retail trade, recorded a 7% increase in GRT
- Construction industry was the economic driver for some of the rural counties such as Catron, Luna, and Roosevelt
- Decline in oil prices had caused Eddy and Lea counties to see GRT declines
- Arts, entertainment, and recreation saw a year-over-year decrease of 57% statewide; Santa Fe County saw a 72% drop, Bernalillo County a 71% decline
- The State saw its GDP decrease by 7% year-over-year in Q4 2020.

The EDD reports are [HERE](#)