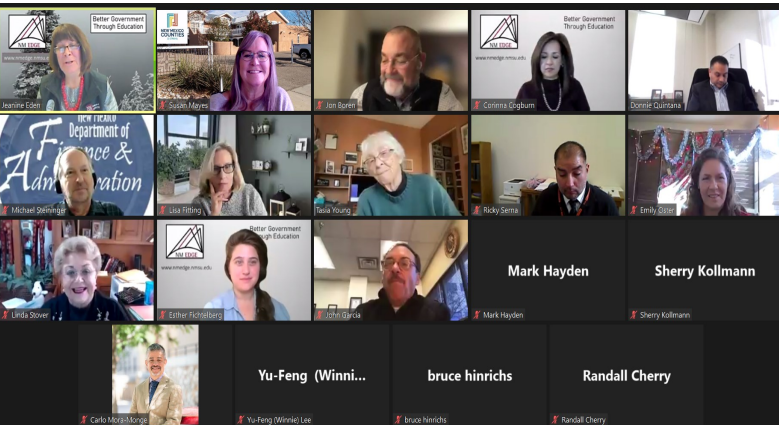




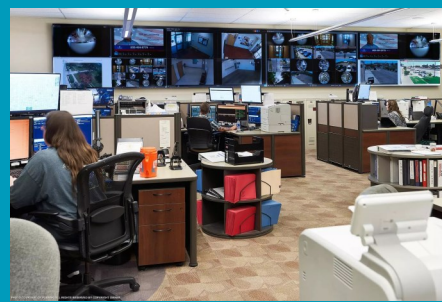
Sheriff's Office Seeks a New Way of Policing As a member of the New Mexico Law Enforcement Academy Board, Santa Fe County Sheriff Adan Mendoza believes law enforcement has an opportunity to work toward a paradigm shift to advance police peer intervention. The sheriff's office empowers its deputies to do the right thing—report acts of misconduct to produce a positive change for its community and law enforcement agency. Sheriff Mendoza is committed to introducing the ABLE (Active Bystandership for Law Enforcement) Project. The ABLE Project serves as a national hub for training technical assistance and research, all with the aim of creating a police culture in which officers routinely intervene as necessary to prevent misconduct, avoid police mistakes, and promote officer health and wellness.

NM Counties is one of several community supporters of this program that agree this program will have a positive impact on the community. Santa Fe County Sheriff's Office is the second NM county, after Colfax County Sheriff's Office, to implement the ABLE Project.



NMC President Linda Stover attended the NM CPM® Advisory Board to discuss county engagement in the program and how to improve or expand the experience with additional curricula. NMC is doing a poll to find out how many **county officials, managers, and staff** have achieved any of the following certifications from NM EDGE:

- ⇒ CPO—Certified Public Official
 - ⇒ CPS—Certified Public Supervisor
 - ⇒ CPM—Certified Public Manager
- Please email Susan Mayes, smayes@nmcounties.org, by Thur., Dec. 23. If you are not aware of the NM EDGE County College program, please contact Interim Program Dir. Jeanine Eden, rjeanine@nmsu.edu.



Why We Need to Transform the 911 System

Public health, justice, and safety suffer when we reflexively deploy police to respond

to mental health crises, "quality of life" disorder, and other societal ills beyond officers' training.

As a result, individuals frequently enter the criminal legal system for non-emergency, non-criminal events and perpetuates the role of police in contributing to mass incarceration. And when the police are deployed to a call for a non-criminal matter, there is a risk that the situation will escalate.

The 911 model must be reimagined to better improve public health, justice, and safety, and to ensure that the correct responder is dispatched at the right time. 911 professionals should be able to deploy public health and mental health practitioners alongside, and sometimes in lieu of, police, emergency medical techs and firefighters. ~governing.com



Hybrid: In-person and virtual
Review/download the agenda [HERE](#)

REGISTRATION OPEN!

Registration deadline for in-person attendees is **Monday, December 27, 2021**



Snow Squall

Many counties were affected by the strong winds during the early morning hours Wednesday from 56 mph in ABQ, 70 mph in Santa Fe, to 103 mph in the Taos Ski Valley.

Some counties experienced a snow squall, power outages, and much devastation. Taos County declared a state of emergency and Los Alamos County set up a Red Cross shelter.

Our hearts go out to all those affected by this fierce winter storm that crossed New Mexico.

NM EDGE Winter Honing Roadmap/Class Schedule

T is for Training on Tuesdays and Thursdays
January 11–February 1, 2022

New certification for DWI Coordinator [HERE](#)

NACo County FAQs on Recovery Fund

- Q** When is the next Fiscal Recovery Funds report due?
- A** Due by January 31, 2022 for populations in excess of 250,000 or award over \$10M.
- Q** May recipients of the Fiscal Recovery Funds pool funds for regional projects?
- A** Yes. Funds may be spent directly or transferred to another government.



Celebrate Your County's Most Innovative Programs

2022 NACo Achievement Awards
[Applications open](#); Early bird deadline March 4, 2022. Questions? Email awards@naco.org

Thu Jan 6 [NACo Webinar-Preventing County Financial Fraud](#) Noon–1PM

Link to NMC Meetings [Annual Calendar](#)

Link to NMC Loss Prevention Trainings [RSVP](#)

All trainings open to county elected officials & employees

Tue & Thu Jan	Live online NMEDGE Classes Jan. 11, 13, 17, 18, 25, 27
Mon Jan 17–18	Live online NM EDGE Classes
Tue Jan 18–20	Hybrid NMC Legislative Conference in person & virtual, Santa Fe County
Tue Jan 18	Legislative Session Begins Noon
Tue Jan 18	Hybrid NMCIA Membership meeting 9AM Eldorado Hotel
Tue Jan 18	Hybrid NMC Board of Directors meeting 2PM Eldorado Hotel
Thu Jan 27	Virtual NMC Executive Committee meeting 11AM
Wed Feb 2	Deadline for Bill Introduction
Sat Feb 5	NMC Board of Directors meeting 8:30AM Santa Fe County
Thu Feb 10	Virtual NMC Executive Committee meeting 11AM
Sat Feb 12–16	NACo Legislative Conference D.C.
Thu Feb 17	Legislative Session ends Noon
Tue & Thu Mar	NM EDGE Classes Live Online, Mar. 8, 10, 15, 17, 22, 24, 29, 31
Wed Mar 9	NMCIA Board of Directors meeting 8:30AM TBD
Wed Mar 23	Legislative Regional meeting 10AM Doña Ana County
Thu Mar 24	Legislative Regional meeting 10AM Chaves County
Tue Mar 29	Legislative Regional meeting 10 AM San Miguel County
Wed. Mar 30	Legislative Regional meeting 10AM

Share your county news and photos at <https://www.facebook.com/nmcounties33/>
Submit county job postings [here](#)
View recent job postings [here](#)
New Employee? Add Directory updates [here](#)
Did someone forward you this email? [Sign up](#)