



Sierra County Behavioral Health RISE Program

2021

Truth or Consequences Behavioral Health Needs - 2019

Small Rural Community

6th Highest Poverty Rate in the State 21% – High Suicide Rate – High Overdose Rate

Recidivism rate over 90%

- Very Limited Resources
- No funding for in-custody Behavioral Health Services
- No funding for MAT program
- No homeless shelter
- No crisis center – no detox beds/facility/services

RISE Grant Goals

| PROGRAM DEVELOPMENT | PROGRAM GOALS | IN CUSTODY TREATMENT | RELEASE PROGRAMS |
|------------------------------------------------------------------------|----------------------------------------------------------------------------------------|---------------------------------------------------------------------------------|-----------------------------------------------------------------------------------------------------------------------------------------------------------------------------|
| Community Collaborative Meetings | Provide treatment for those in the justice system | Behavioral Health Assessment Treatment Plan | Release Plan to include medication and prescriptions upon release |
| Grant Application | Lower recidivism for those with behavioral health/mental health/substance abuse issues | Case Management | Intensive Case Management: assistance with basic life needs, clothing, food, housing, ID documents, job applications, transportation to court, treatment, appointments, etc |
| Partner with BH Facility (Olive Tree) for services and grant oversight | Provide a warm handoff and continued services when released from incarceration | Individual and group therapy: MRT, Anger Management, SUD treatment, Life Skills | Continued individual and group therapies, Case Management, MAT |

Community Partners and Collaborative Meetings

Olive Tree Wellness Center, Sierra Vista Hospital, Local Law Enforcement, Courts, District Attorney,

Health Care Providers

Defense Attorneys

Public Outreach



Assessments and Treatment begin for in-custody detainees



Adding Classes: MRT, matrix, anger management, life skills, and Ladies classes

Art Therapy and our 1st Graduates!



Warm Handoff to Release Programs

Art Therapy



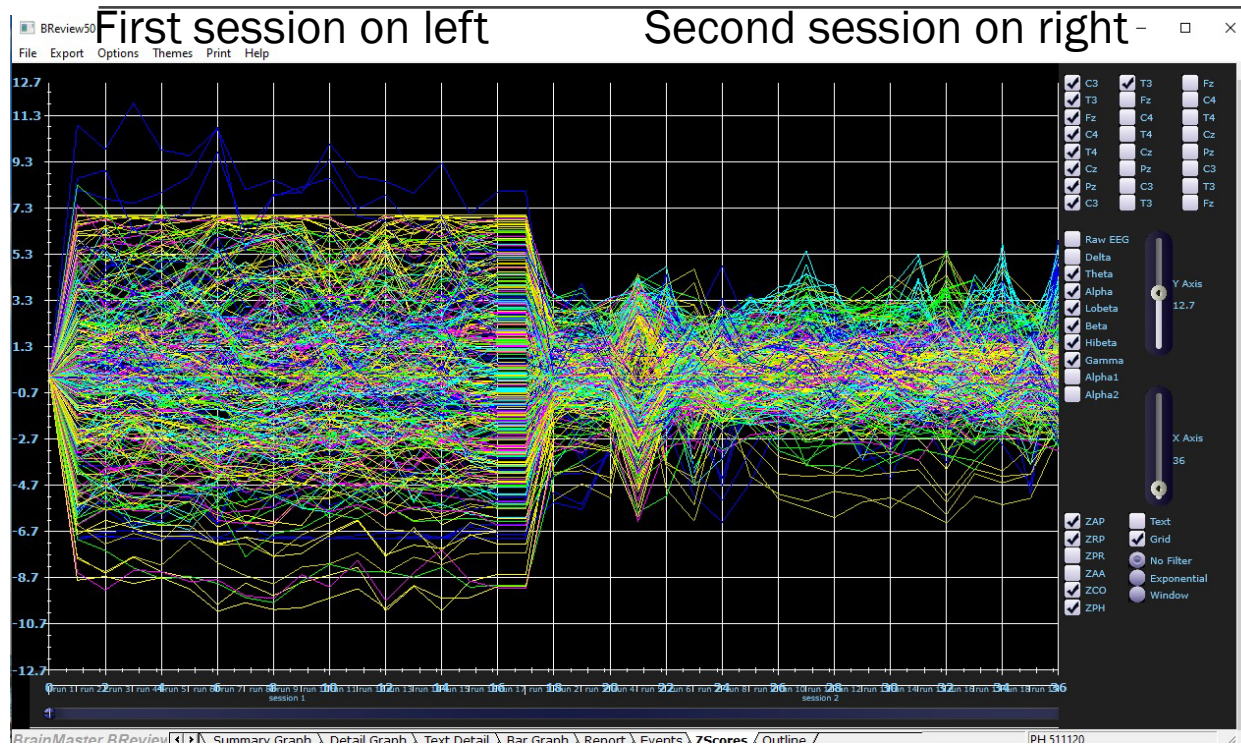
Group Classes



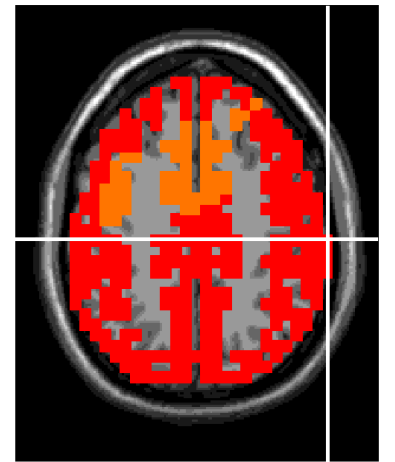
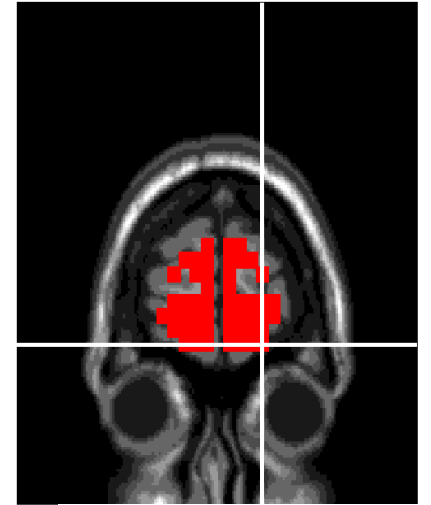
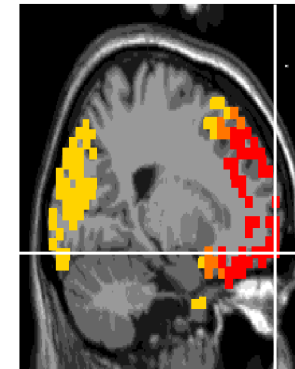
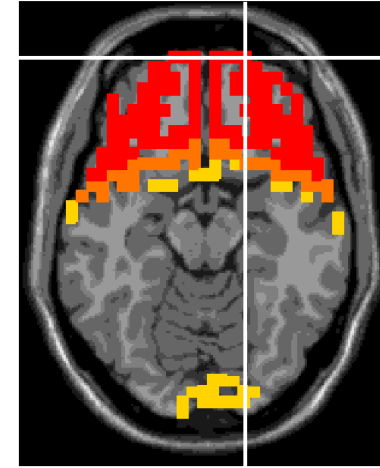
Accu-Detox - Helps with detox, relieves pain and stress



Neurofeedback Retraining the Brain



Reads eeg brain waves and feeds them back to the brain – changes the brain timing - reduces anxiety, depression, pain, helps with sleep disorders, migraines, attention disorders



Transitional Homeless Housing Project

Individuals released into the community with no place to go – quickly ended up back in custody. Leasing a motel provided needed stability. Clients have easy access to case managers and programs and assist with upkeep of the facility while learning new skills – painting, refurbishing, gardening.





NEW
FLOORING

New Skills



SEED to SUPPER

a beginner's guide to low-cost vegetable gardening

Life Skills -

Housing Residents learn gardening skills



Intensive Case Management



Food, clothing, transportation,
family therapy



Success Stories

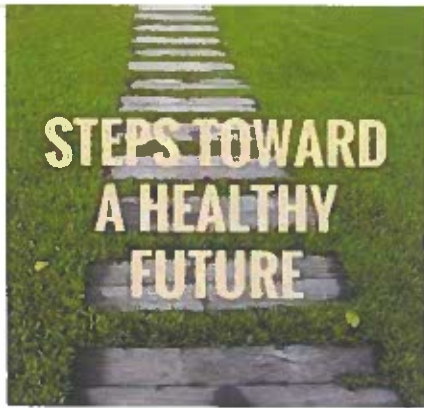
I'm originally from NY, from a young age I started working in kitchens to get by everyone I met. I moved to a rural quickly became the decided I wanted entrepreneurship I was already taking something called trauma. The brain that I was put on and I am still undergoing a therapy program extremely excited to suffer in group sessions fresh, Farm to market



I really appreciate as possible. I am certain by the time I graduate you will be proud to call me a fellow Alumni. Thank you again for any help you may be able to offer.

und the country. Always working experiences New Mexico. I started with a lack of business caused the re mobile juice cart. I wanted to take before I was able to start I tragically order but because that event experience is something that occurs when to shield itself from the pain could consider me for your scholarship in an amazing organization called a safe enough place to begin the line plant based program. Not exactly what I need to know to open





The process of reintegration and recovery involves many people who build a support system to keep each other accountable and on the path to permanent reintegration into the community. Through this process it is possible to learn to live clean, sober, peaceful, productive lives. We work with our participants to provide that level of support and advice that is so critical and necessary in the early stages of recovery and reintegration.

RISE/COSSAP of Sierra County
The OliveTree
808 Fir St.

Truth or Consequences, NM 87901
575-208-4045 or 575-740-9648
lisa.daniel@theolivetreennm.org

or

katharine.elverum@theolivetreennm.org

**Other Programs offered through
Sierra County Grants or The Olive-
Tree:**

**Sierra County Crisis Response
Team** -is an innovative first-
responder model of police-based
crisis intervention training to help
persons with mental disorders and/
or addictions access treatment ra-
ther than place them in the
criminal justice system due to
illness-related behaviors

**BHIZ—Behavioral Health Interven-
tion zone.** This program offers sup-
portive services for those struggling
with mental health issues or sub-
stance abuse issues.

**Infant Mental Health and Parent
Child Psychotherapy—Therapy for
young children from birth—5yrs
and their parents/caregivers**

Neurofeedback

Accu-Wellnes/Accu Detox

RISE/COSSAP OF SIERRA COUNTY



REACH INTERVENE SUPPORT And ENGAGE

The OliveTree
808 Fir St.
Truth or Consequences, NM 87901
575-208-4045 or 575-740-9648
Email:
lisa.daniel@theolivetreennm.org



Re-integration, Support and Services

Our goal is to provide services to inmates, up to 90 days to support re-entry into the community for those released from incarceration.

The OliveTree which is subcontracted with Sierra County to manage the RISE/COSSAP grants have developed supportive services with community partners for those being released from jail.

Pre-release services begin while the inmate is incarcerated. Services can also begin within a 90 day time frame after release.

This program is offered to those that meet the criteria and display the willingness to participant and commit to the 90 day program.

Once an initial intake is completed and there is **acceptance** into the program, the participant will have a behavioral health assessment completed. A referral will be made to their choice of therapist. The case manager will assist the participant in developing and Individualized Case Plan. The participants case manager will have a minimum of one time a week contact with the participant. All participants agree to participate in group classes and therapy weekly.

The goal of Intensive Case Management is support the participant in achieving an optimum quality of life through developing plans, enhancing life skills, addressing health and mental health needs, engaging in meaningful activities and building social and community relations.

SERVICES AVAILABLE

Both In-Custody and Released:

- Needs Assessments
- Intensive Case Management
- Behavioral Health Assessments
- Individual Case Plans
- Therapy
- Group Classes
- Accu Wellness/Accu Detox
- Book Club (in-Custody)

Classes Available

- Moral Recognition Training (MRT)
- Life Skills
- Cognitive Behavior Groups
- Anger Management
- The Wellness and Reflection
- SMART Recovery
- Art Therapy
- Music/Movement Classes
- Accu Wellness/Accu Detox

HOUSING

- The RISE/COSSAP Grant offers temporary housing for those participants released from jail, that are homeless. The housing is transitional only and is available for up to 90 days for those participants in need.
- Participants that need housing must agree to participate fully in the RISE/COSSAP Program. This means, attending all classes and participating in therapy. The participant is required to sign a housing agreement and follow the rules and policies of the housing program. There are chores and curfews requirements in place for all participants.



- The RISE/COSSAP housing program is a supportive environment that provides all participants in our program with the opportunity to transition back into the community by living with structure and accountability.
- Part of the structure of transitioning into life in learning to fill our day with worthwhile and productive activities. Participants are required to productive and self-sufficient. Job search and employment are expected so that transition into an independent setting within a timely manner is achievable.