

NM Counties Association 86th Annual Conference

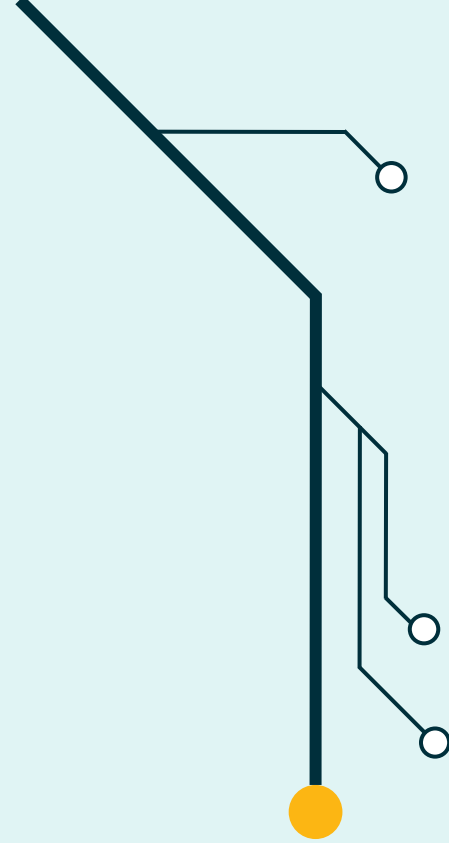


OBAE Introductions

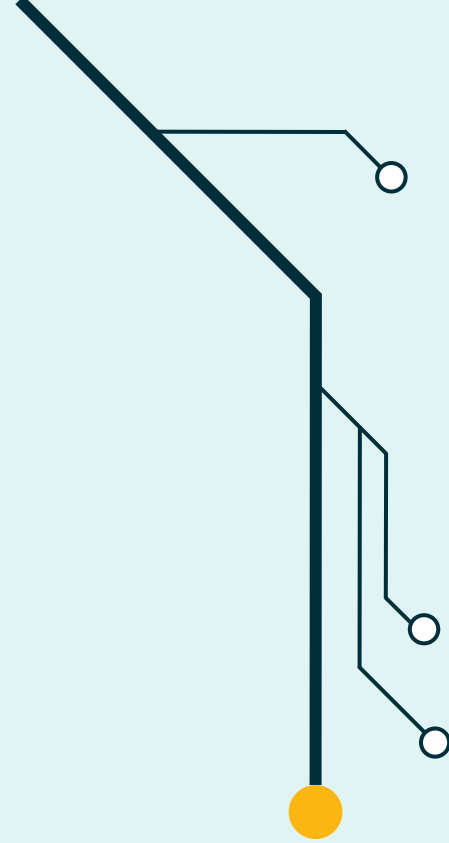
- *Drew Lovelace – Operations Manager of the Office of Broadband Access and Expansion (OBAE)*
- *Alex Trujillo – Project Manager of the Office of Broadband Access and Expansion (OBAE)*

Broadband Expansion Federal Digital Equity

Drew Lovelace, Operations Manager



BEAD and DE Funding Timeline



BEAD and DE Funding

Two major funding programs:

- 1. Broadband Equity Access and Deployment (BEAD)**
- 2. Digital Equity (DE)**

Broadband Funding Priorities and Timeline

New Mexico will develop a statewide plan for expanding broadband to all in-state addresses

Funding priorities for fiber-to-the-premises deployment

1. **Unserved locations:** those that cannot get internet service at least 25/3 Mbps
2. **Underserved locations:** those that get internet service between 25/3 and 100/20 Mbps
3. **Community Anchor Institutions** (schools, libraries, hospitals, public safety): locations that cannot get 1Gbps internet
4. Low income and affordable housing

Planning

2023

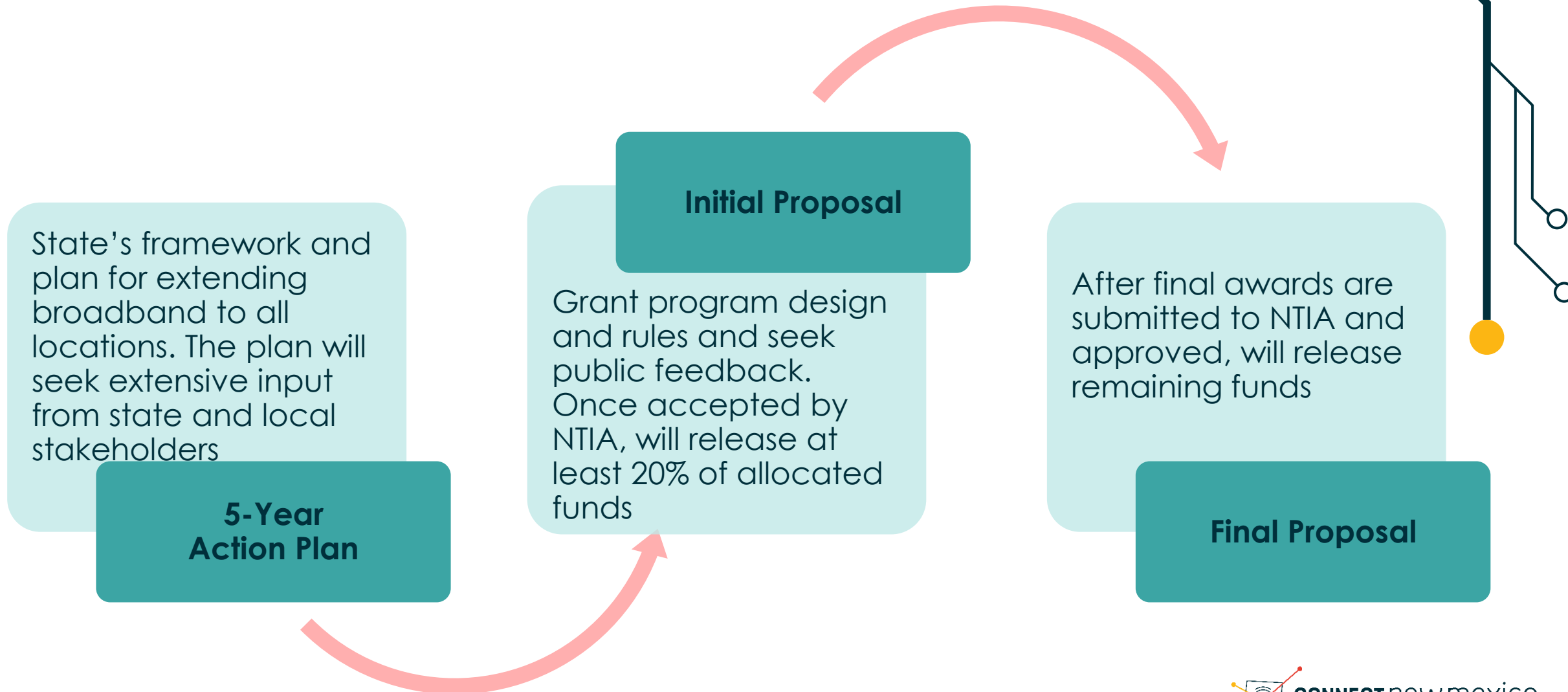
Provisional grant program

2024

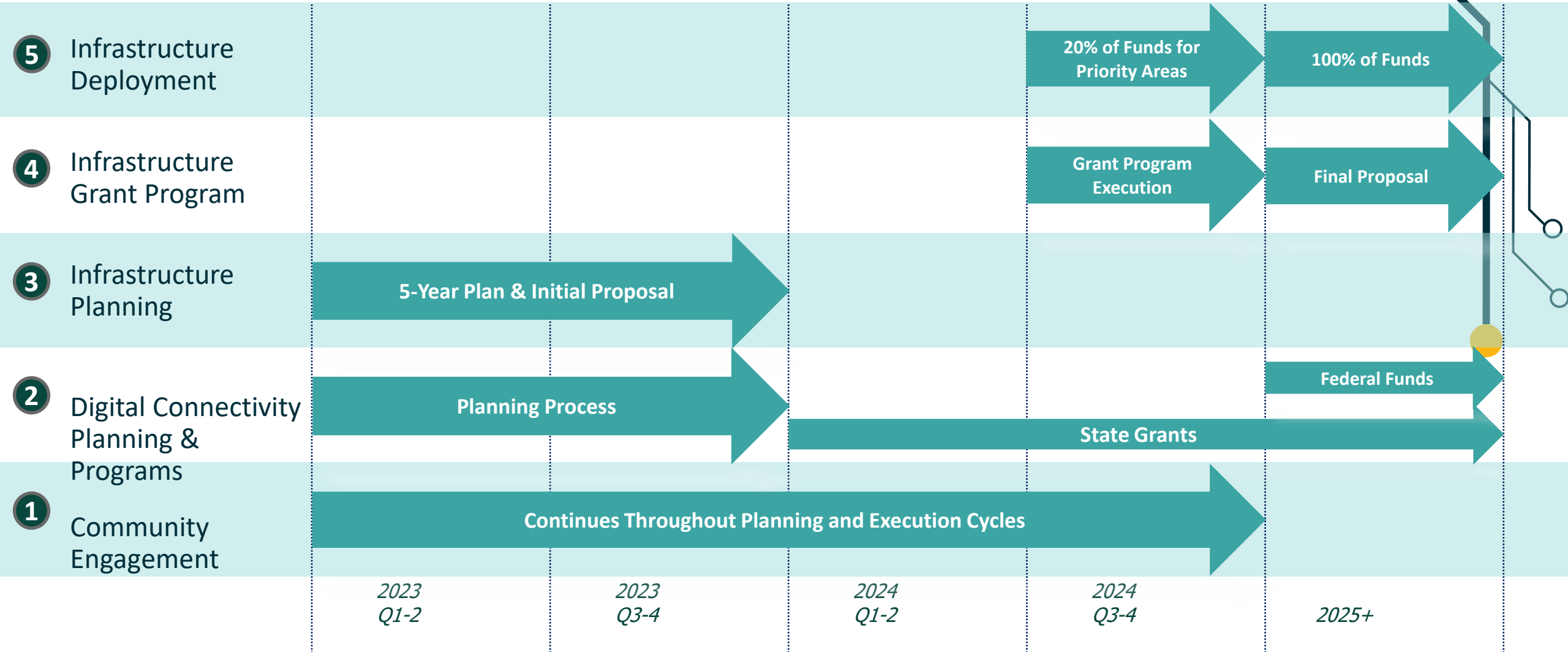
New infrastructure

2025

Required Planning Will Result in Release of Funds



Broadband Programs Timeline



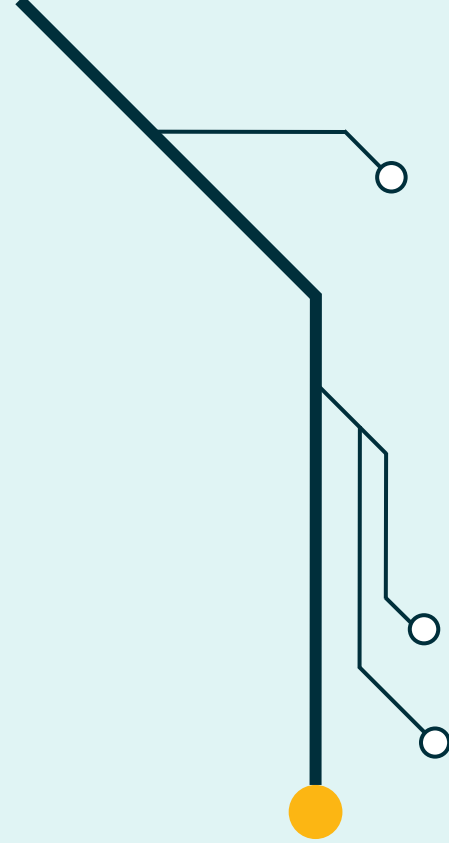
Broadband Service Deployment Under BEAD

Broadband service project areas prioritize unserved address locations

- State issues subgrants to deploy broadband infrastructure and deliver service
- Projects comply with fair labor standards
- State workforce development plan ensures readiness and new jobs to underrepresented groups
- Low-cost service options available to Eligible Subscribers – any household qualifying for the Affordable Connectivity Program (ACP)
- Low-cost service parameters based on provider participation in ACP or other subsidies, cost to subscribers after subsidies, and plan speed

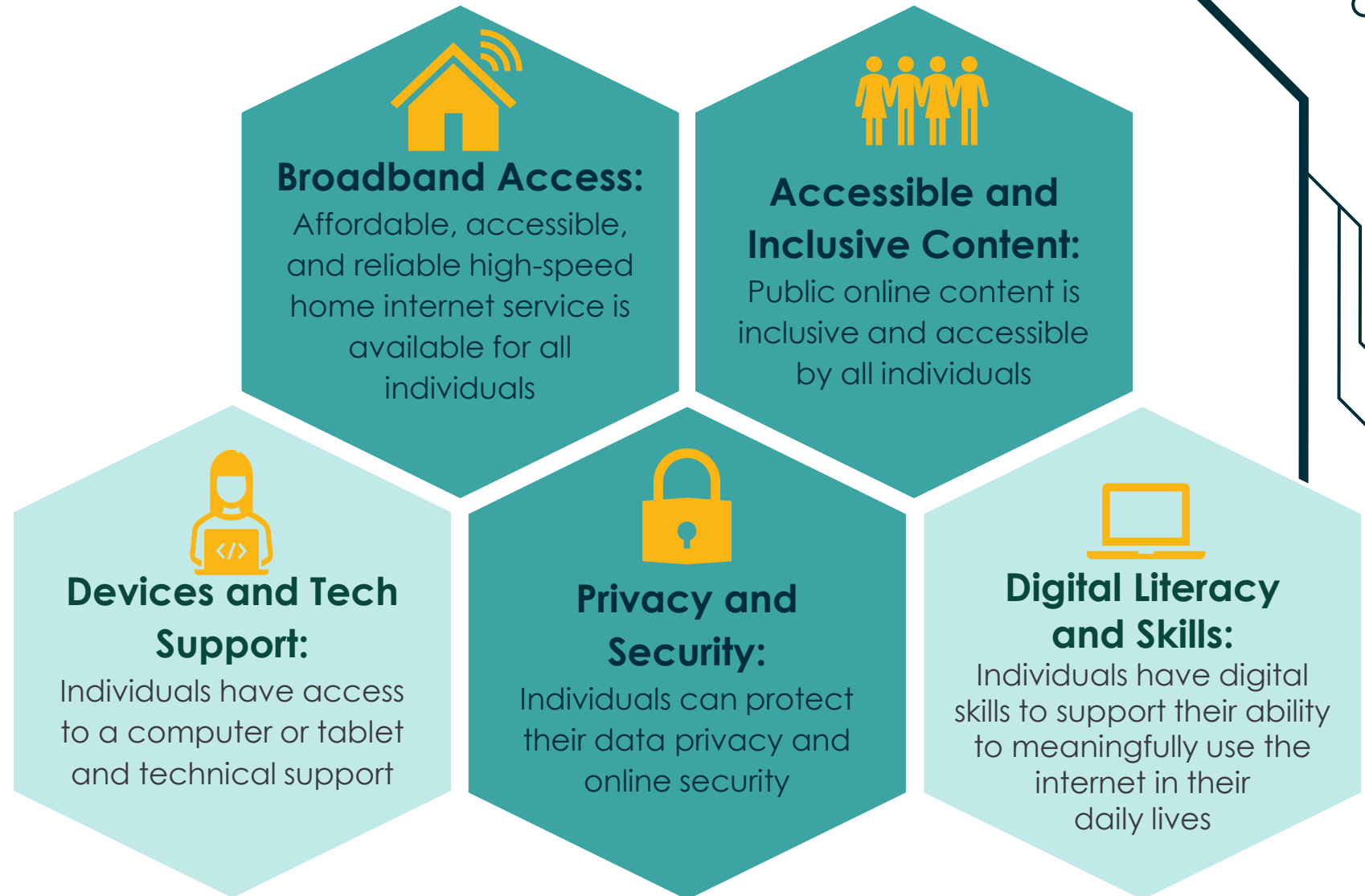


Digital Equity



What is “Digital Opportunity and Equity”?

Generally, experts have identified five elements of digital equity:



Digital Equity Ecosystem

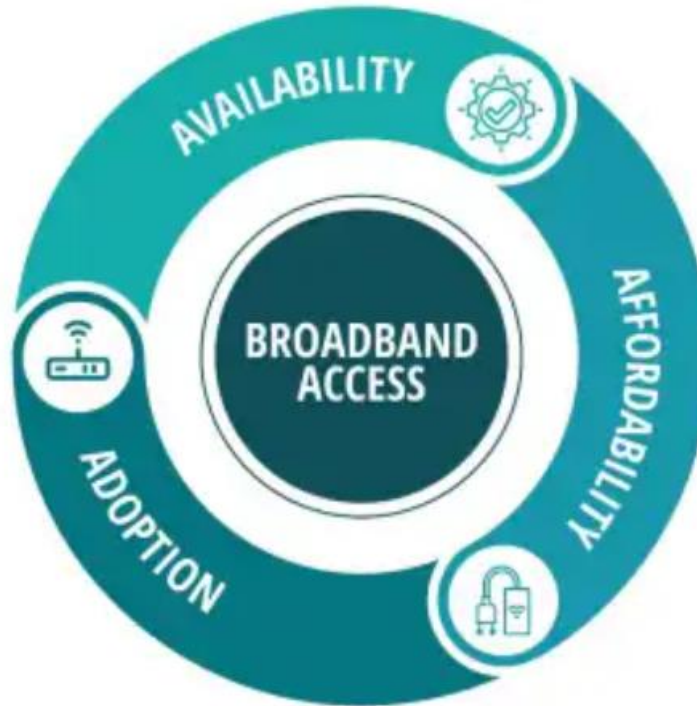
A Digital Equity Ecosystem coordinates entities' work together to address all aspects of the digital divide, including affordable broadband, devices, and skills.

Indicators of a strong Digital Equity Ecosystem:

- Existence of programs and policies **addressing all aspects of the digital divide:**
 - Affordable and subsidized broadband service options that meet the community's needs
 - Affordable and subsidized device ownership programs that meet the community's needs
 - Multilingual digital literacy and digital skill trainings that meet the community's needs
 - Hardware and software technical support
 - Digital navigation services to guide residents to the above services
- **Collaboration:** Entities providing local digital inclusion services, policymakers, advocates, social service providers and community leaders co-create solutions in partnership with the community.

Digital Equity

Overcoming knowledge barriers, including a lack of digital literacy or educational limitations, which prevent people from using the internet.



Affordable Connectivity Program (ACP)

FCC subsidy program helps households better afford internet services and devices

The Affordable Connectivity Program is an FCC program that helps connect families and households struggling to afford internet service

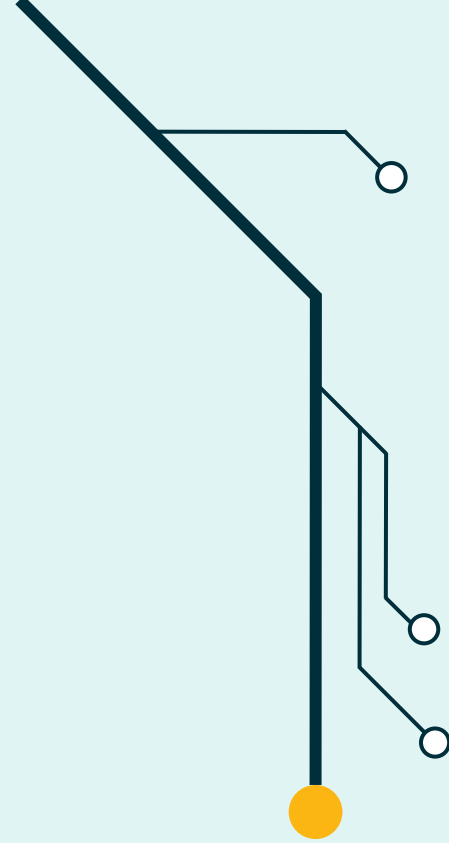
Benefits for eligible households:

- Up to \$30/month internet service discount
- Up to \$75/month internet service discount of qualifying Tribal lands
- One-time discount up to \$100 for a device
- Some low-cost service plans can be entirely subsidized

Household income and federal assistance programs determine eligibility*

Apply for ACP: affordableconnectivity.gov

What Counties, Local Government, and Elected Officials Can Do



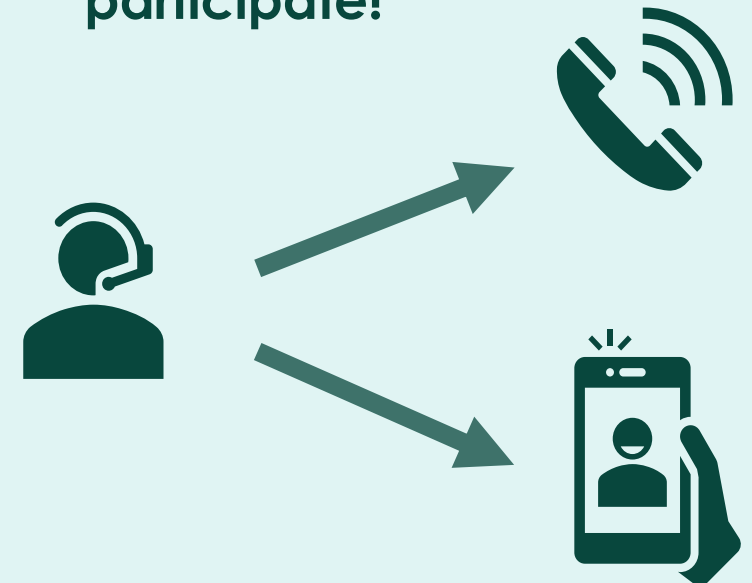
Participate in the Resident Survey

New Mexico is conducting a statewide resident phone survey to assess digital connectivity participation

Survey data, along with stakeholder interviews, will support the development of measurable objectives in the following areas:

- Broadband access and adoption
- Devices and technical support
- Digital skills and literacy
- Data privacy and cybersecurity

If contacted, please participate!



Stakeholder Surveys



Agency Asset Inventory

Infrastructure-related assets that may help facilitate or reduce the cost of broadband deployment in the state



Community Anchor Connectivity

Barriers and obstacles to clients, facility access, criticality of internet to mission and program capacity



ISP Workforce Preparedness

Sources for hiring, workforce programs, ACP, internet skills and adoption, collaboration in community, deployment approaches, disaster recovery plans



Workforce Programs Inventory

Workforce programs profile, barriers to developing diverse & skilled workforce, ISP workforce-related questions



Digital Equity Program Inventory

Program details, planned program types & areas of focus, broadband impacts on programmatic outcomes



Barriers & Obstacles for Covered Populations

Internet, computer & content access, digital skills, data security, barriers & obstacles, broadband impacts on programmatic outcomes



How can my local community prepare?

Community support is key to grant funding success for ISPs

Like the OBAE pilot grants, the BEAD grant opportunity will incorporate substantial points for community engagement

The 5 elements of digital participation can frame planning

They are a useful way to assess what matters most to your community and engage partners such as schools, libraries, chambers of commerce, and community colleges in activities to promote participation

Determine community priorities

This will help set your partners up to apply for digital equity grants and identify areas of collaboration with ISPs

Engage with ISPs

Allow them to propose what they will do for your community in exchange for formal community support – primarily for infrastructure but also initiatives to promote digital participation



**Affordable
Broadband**



**Inclusive
Content**



Devices



**Digital
Security**



**Digital
Literacy**



Government Agency Asset Inventory

- **Physical assets** (conduit, fiber, structures, real estate, poles, etc.) available for lease to ISP) for broadband deployment
- **Capital construction projects** that include opportunities for placement of communications facilities
- **Analysis of skilled labor availability and workforce readiness** as it may impact state broadband policies and deployment goals
- **Agency role in tracking and monitoring** broadband or other communications outages
- **Planning or development of regulations** related to reliable and resilient broadband or other communications services
- **Policies and strategic plans** related to broadband digital equity, infrastructure deployment, economic development, resilience, partnerships, business planning and related efforts



Community Anchor Institutions

- **CAI connectivity:** After unserved and underserved locations, BEAD funds can support access to 1 Gbps internet for CAIs
- **State identifies eligible CAIs** and assesses needs
- **State applies the definition** and determines CAI types to serve, and its basis if selecting CAIs not in explicitly in definition
- **Challenge process:** Organizations not selected as eligible CAIs will have opportunity to challenge state determination

Definition:

“Entity such as school, library, health clinic, health center, hospital or other medical provider, public safety entity, institution of higher education, public housing organization, or community support organization that facilitates greater use of broadband service by vulnerable populations, including, but not limited to, low-income individuals, unemployed individuals, children, the incarcerated, and aged individuals.” (BEAD NOFO p. 11)



Community Anchor Institutions Survey

- **Profile:** Organization focus, groups you serve, and programs or services that facilitate use of broadband internet services by your clients
- **Barriers and obstacles:** Describe what prevents members of the communities you serve from accessing or using broadband internet
- **Facility access:** Level of internet access your organization's locations have and need. Can you get at least 1 Gigabit per second? If not, why not?
- **Criticality of service:** Criticality of broadband internet service to your mission. Has your organization been consulted in emergency or resilience planning?
- **Workforce development:** Is your organization involved in telecom or technology workforce programs?



Workforce Development Survey

- **Profile of workforce development programs** your organization provides or uses, including:
 - Programs for job placement in the communications industry or transferable skill sets
 - Programs addressing any specific populations or communities (such as rural)
 - Current capacity for developing and offering trainings to meet workforce demands in the communications industry
 - Plans for developing and offering additional programs to meet future demands
 - Funding sources for training programs
- **Barriers and obstacles to developing a diverse, skilled workforce** and how these can be mitigated
- **ISP workforce related questions**



Technology and Funding Opportunities

Alex Trujillo, Project Manager

Broadband Technology Overview



Federal and State Broadband Thresholds

25/3
Mbps

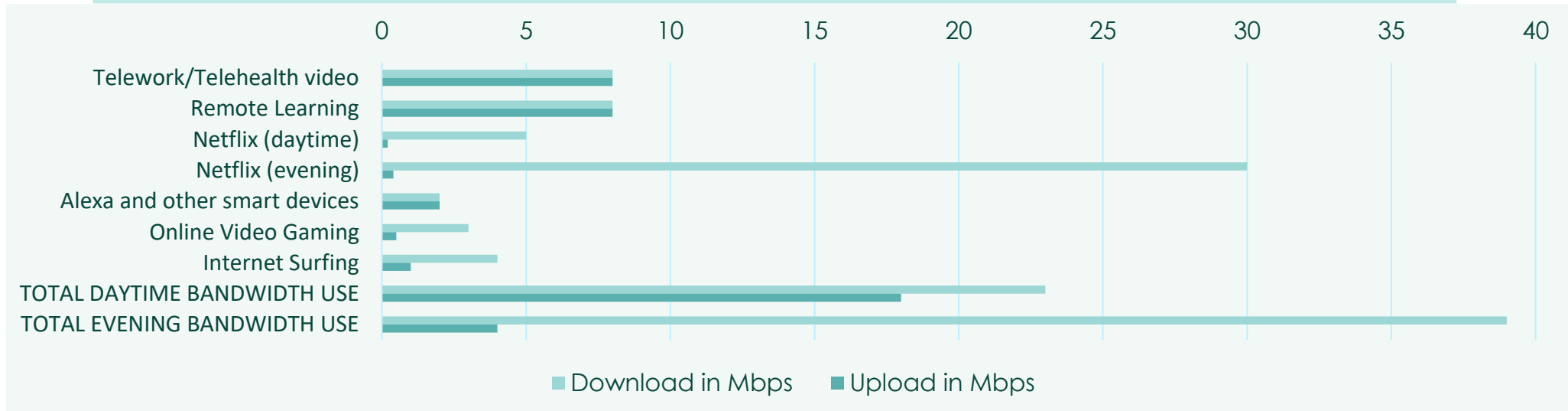
The FCC's definition is 25 megabits per second down and 3 megabits per second up (25/3 Mbps)

100/20
Mbps

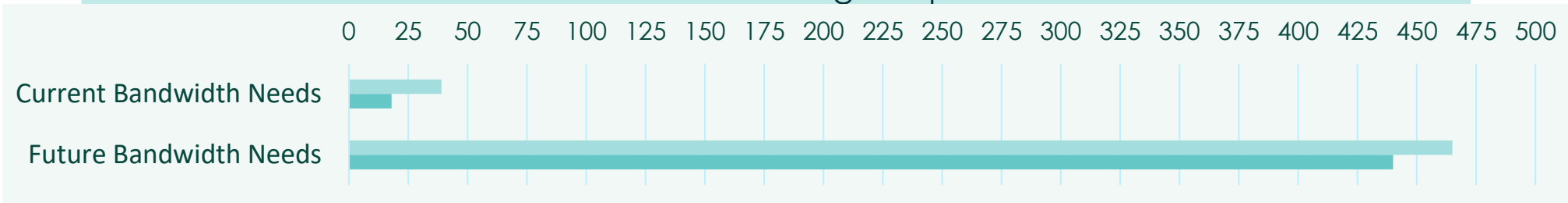
Congress set a new 100/20 Mbps standard in the American Rescue Plan Act and Infrastructure Investment & Jobs Act

How much bandwidth do we need?

Today we need more bandwidth than minimum 25/3 Mbps broadband speeds defined by the FCC

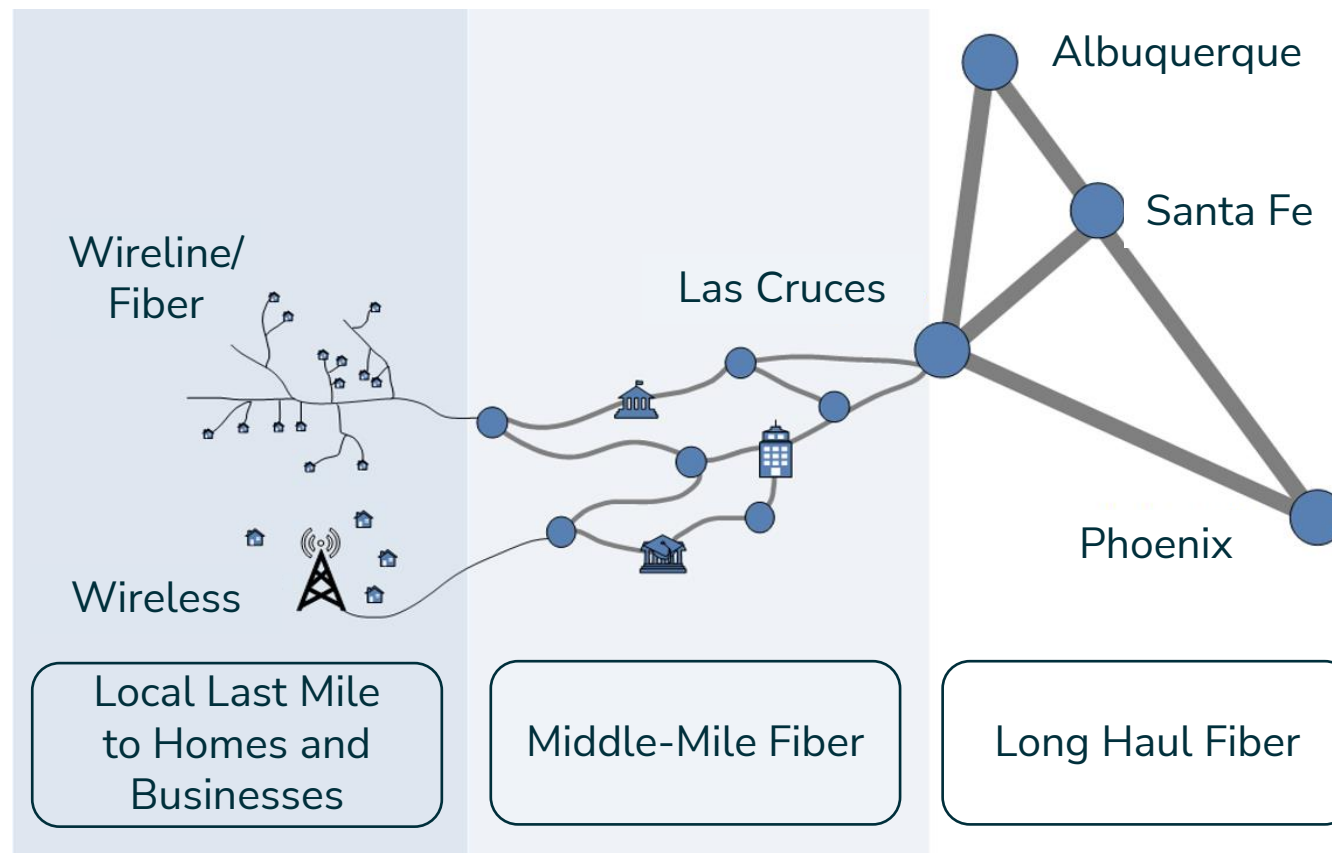


With augmented reality, other anticipated applications, and increased usage, we will soon need much higher speeds

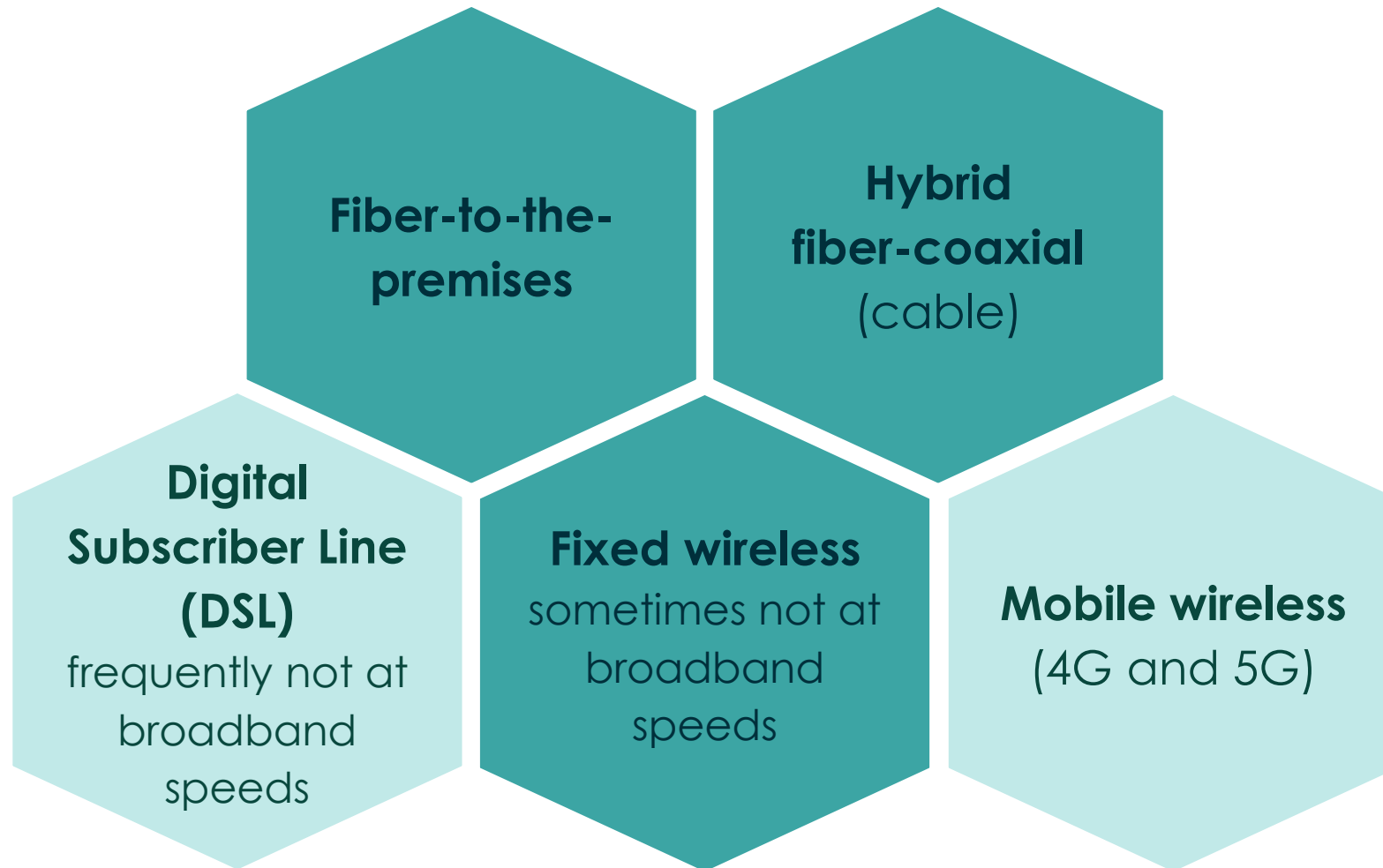


THE ELEMENTS OF A BROADBAND NETWORK

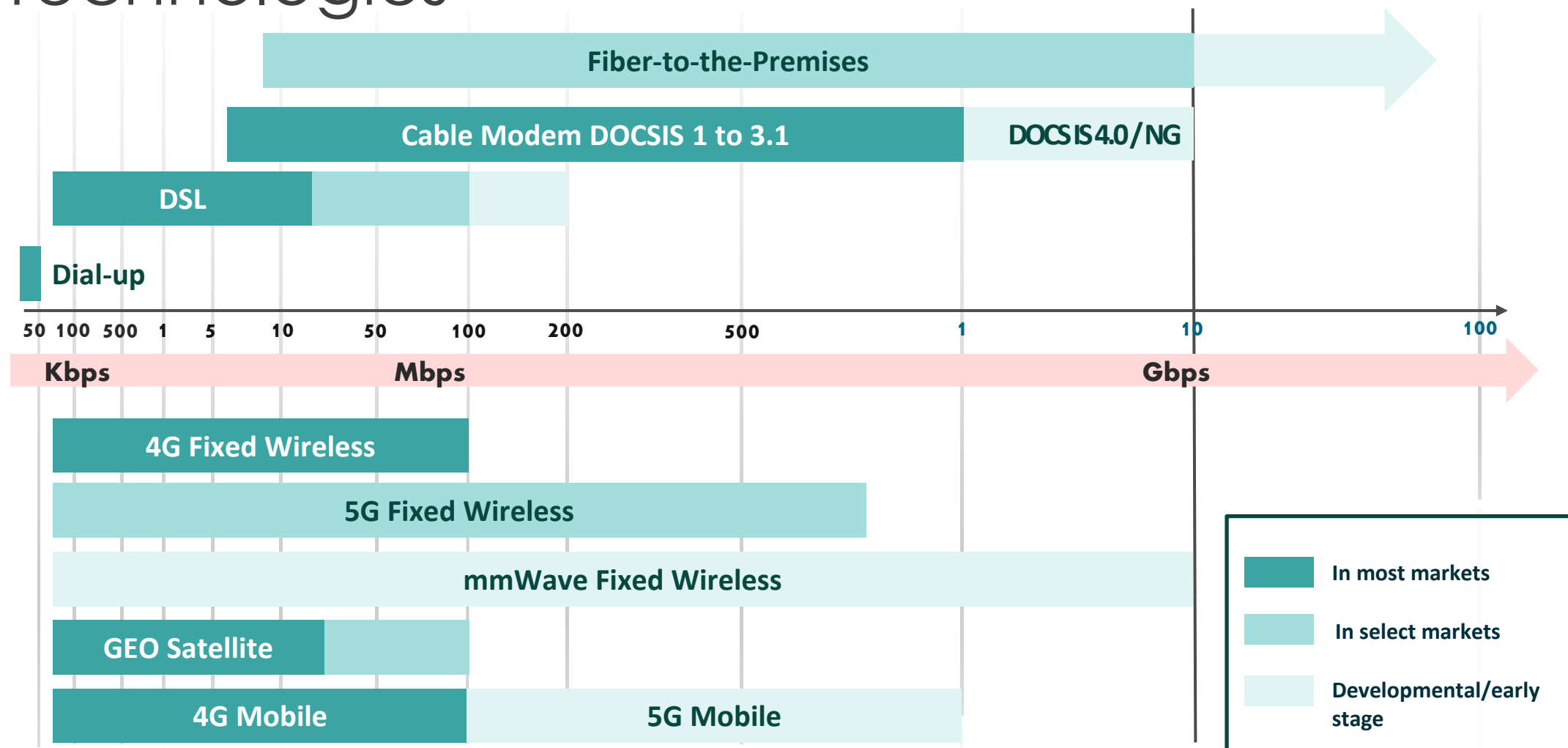
- Long haul fiber
- Middle mile fiber
- Last mile (wireline or wireless)



Types of Broadband Infrastructure



Typical Speeds: Wireline and Wireless Technologies



How did we get here?

Broadband has developed through the evolution of technology & industry investment

~1995: Dial-up

Telephone companies connect homes & businesses to the internet over copper telephone lines, at “narrowband,” slow speeds

~1999: DSL

Telephone companies use new technology to offer faster internet over copper wires -- but still with speed & capacity limitations

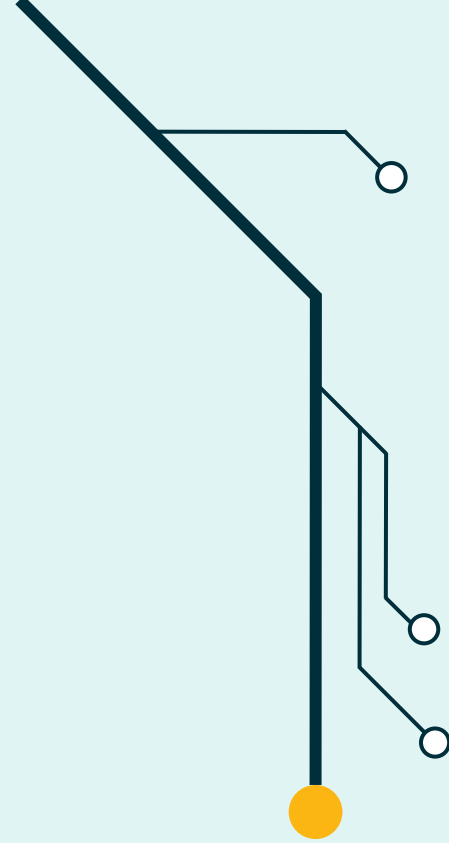
~1999: Cable Modem

Cable companies use their last-mile video networks to connect customers to the internet, faster

~2005: Fiber-to-the-premises

Very high speeds to end users, but only in select areas where companies – or the public sector -- invest

Partners



Partnerships

Our ISP broadband partners

Plateau

Western

SacredWind

Resound

Kit Carson

NM Surf

Lumen

Windstream

JNet

MAT

Comcast

LEACO

PVT

Tularosa

Laguna

Vexxus Fiber

Oso Internet

TDS

T Mobile

AT&T

Verizon

Smith Bagley

RediNet

Governmental

State Broadband Offices

State Agencies

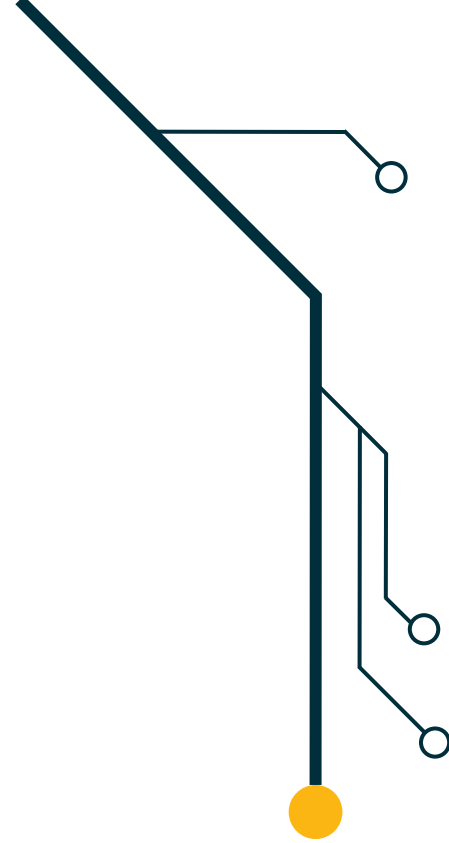
Tribal Governments

County Governments

City Governments

Land Grants

Colonias



Non-Profits and Community Groups Partners

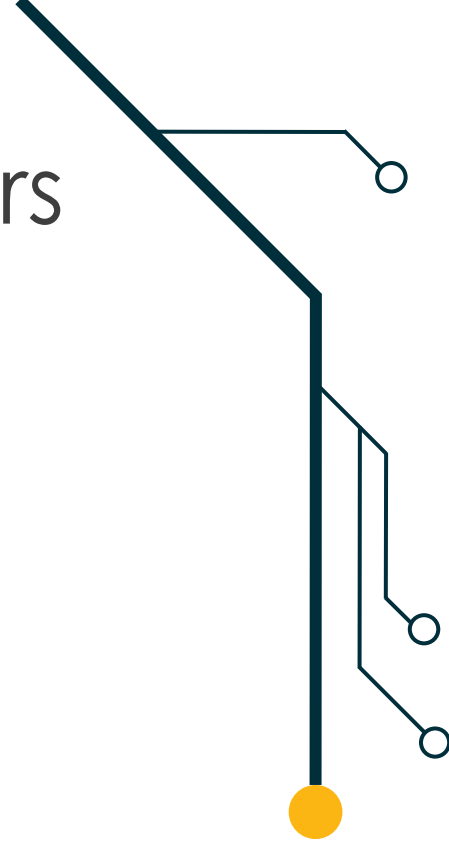
Borderplex

Community Learning Network

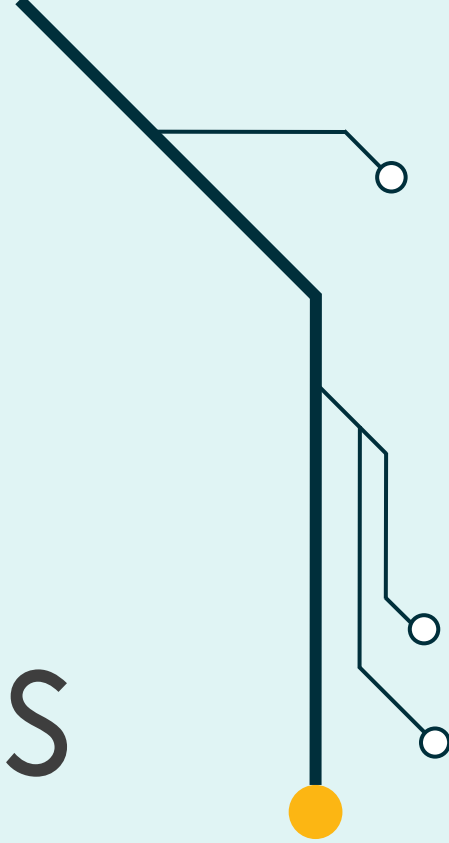
Mamacitas Cyberneticas

Teeniors

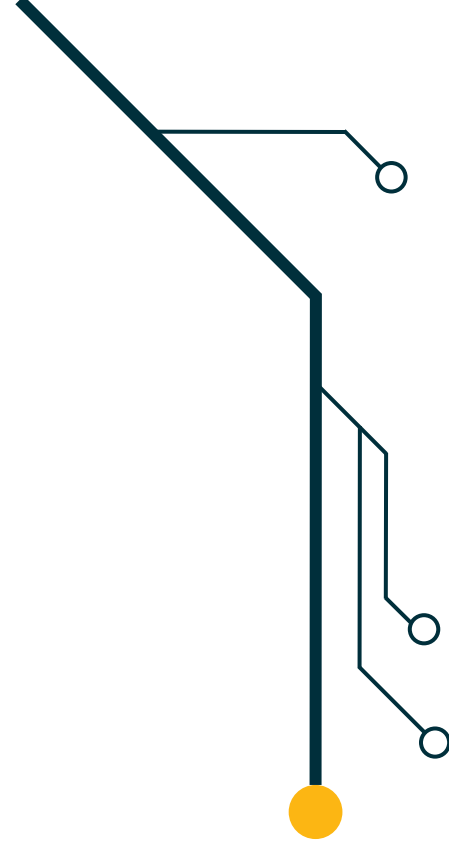
And more...



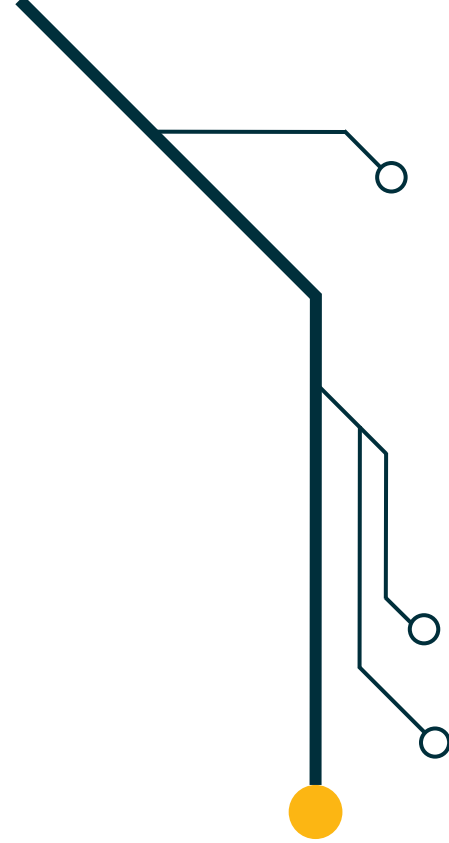
Funding Opportunities



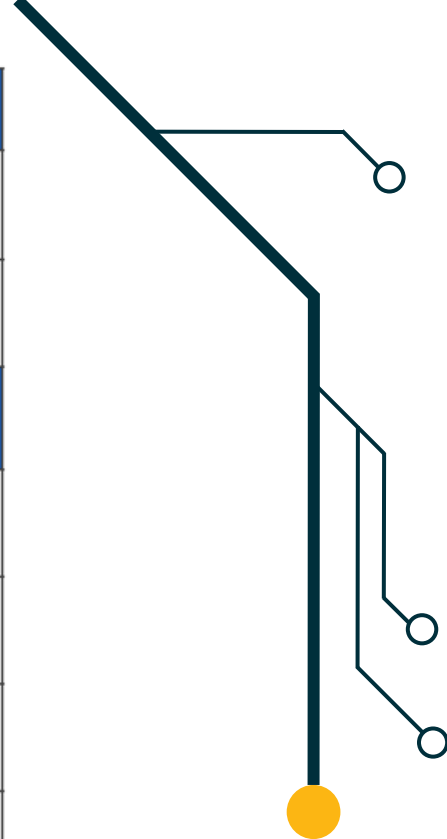
NTIA Tribal Broadband Connectivity	Amount
Pueblo of Acoma	14,346,244.00
Picuris Pueblo Indian Tribe	\$3,742,991.00
Pueblo of Santa Clara	\$9,175,946.00
Pueblo of San Ildefonso	\$4,925,582.00
Pueblo of Zia	\$4,695,868.82
Mescalero Apache Telecom, Inc.	\$43,943,116.00
Pueblo of Isleta	\$26,033,972.74
Santa Fe Indian School	\$57,298,683.09
Santo Domingo (Kewa) Pueblo	\$12,775,576.64
Jicarilla Apache Nation Power Authority	\$6,935,801.00
Taos Pueblo Planning, Feasibility, and Sustainability Studies	\$477,817.00
NTIA Connecting Minority Communities	Amount
Eastern New Mexico University Roswell (NM-03)	\$1,945,329.00
New Mexico State University	\$1,686,620.00
Southwestern Indian Polytechnic Institute (NM-01)	\$1,645,133.56
New Mexico Highlands University, Las Vegas	\$2,988,682.27
NDIA Digital Navigators Pilot Award	Amount
Pueblo of Jemez	\$382,752.00



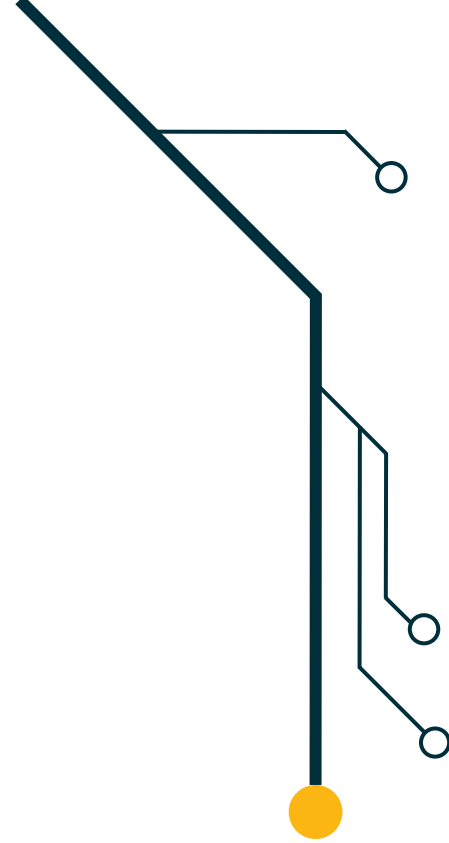
USDA Rural Development ReConnect Program	Amount
Penasco Valley Telephone (PVT) Cooperative (Chaves, Eddy, Lincoln, Otero)	\$13,900,000
Western New Mexico Telephone Company Inc.(Catron County)	\$23,800,000
E.N.M.R. Telephone Cooperative	\$2,600,000
Kit Carson Electric Cooperative Inc.	\$23,600,000.00
Leaco Rural Telephone Cooperative Inc.	\$25,000,000.00
Western New Mexico Telephone Company Inc	\$35,000,000.00
WNM Communications Corporation	\$25,000,000.00
Continental Divide Electric Cooperative Inc.	\$3,681,000.00
Eastern New Mexico Rural Telephone Cooperative	\$14,749,747.00
Tularosa Basin Telephone Company Inc.	\$5,825,102.00
Peñasco Valley Telecom	\$28,927,570.00
Valley Telephone Cooperative	\$44,924,000.00
Affordable Connectivity - National Competitive Outreach Program (NCOP)	Amount
City of Albuquerque	\$400,000.00
New Mexico Black Leadership Council, Albuquerque	\$400,000.00
El Paso Community Foundation (multi-state award includes Las Cruces)	\$300,000.00



Affordable Connectivity - Tribal Competitive Outreach Program (TCOP)	Amount
Pueblo of Jemez	\$379,234.00
Pueblo of Zuni	\$325,000.00
Connect New Mexico Pilot Program (ARPA Capital Projects Fund)	Amount
SWC Telesolutions (DBA Ethos Broadband)	\$2,100,000.00
Tularosa Communications	\$9,930,000.00
Western New Mexico Telephone Company	\$6,810,000.00
Valley TeleCom Group	\$5,690,000.00
Comcast Corporation - Phase One	\$8,260,000.00
Comcast Corporation - Phase Two	\$8,840,000.00
Central New Mexico Electric Cooperative	\$8,760,000.00
Ethos Broadband	\$8,480,000.00
Socorro Electric Cooperative	\$9,500,000.00



NM Broadband Equity Fund - NM Community Foundation & NM Broadband Collective	Amount
El Valle de Anton Chico Library	\$35,540.00
Colores United	\$75,000.00
Picuris Pueblo	\$59,904.00
True Kids 1	\$33,000.00
Pueblo of Cochiti	\$40,500.00
Pueblo of Laguna Utility Authority	\$71,596.00
Yee Ha'oolniidoo	\$75,000.00
El Valle de Anton Chico Library	\$35,540.00
Public Regulation Commission	Amount
Baca Valley Telephone Co., Inc.	\$74,700,000.00
Commnet Wireless, LLC	\$3,310,000.00
ENMR	\$1,390,000.00
New Mexico Surf	\$4,283,000.00
NTUA Wireless, LLC	\$1,467,000.00
Peñasco Valley Telephone Cooperative, Inc. ("PVTC")	\$1,607,000.00
Sierra Communications	\$3,384,000.00
Smith Bagley, Inc. (SBI)	\$8,126,000.00
Windstream Communications Southwest	\$1,544,000.00



Rural Digital Opportunity Fund (RDOF)	Amount
Commnet Four Corners, LLC	\$424,184.00
Continental Divide Electric Cooperative	\$37,825,404.80
Kit Carson Electric Cooperative, Inc.	\$18,102,076.90
PVT NetWorks, Inc.	\$12,039.00
Qwest Corporation	\$2,038,002.00
Resound Networks, LLC	\$55,183,614.20
Skylark Broadband LLC	\$246,737.80
SW <u>DinehNet</u> , LLC	\$2,598,030.00
Time Warner Cable Information Services (New Mexico	\$11,217.90
Valor Telecommunications of Texas, LLC dba Windstr	\$15,516,006.80
Yucca Telecommunications Systems, Inc.	\$26,221.00

Be Ready for Grants

What you need:

- Grant writer
- A well-designed plan
- Financial Model
- Engaged community and ISP partners
- Be ready for funding opportunities

<https://www.grants.gov>

<https://connect.nm.gov>

Mailing lists:

Congressional

Foundation

State Government

Mapping

Served

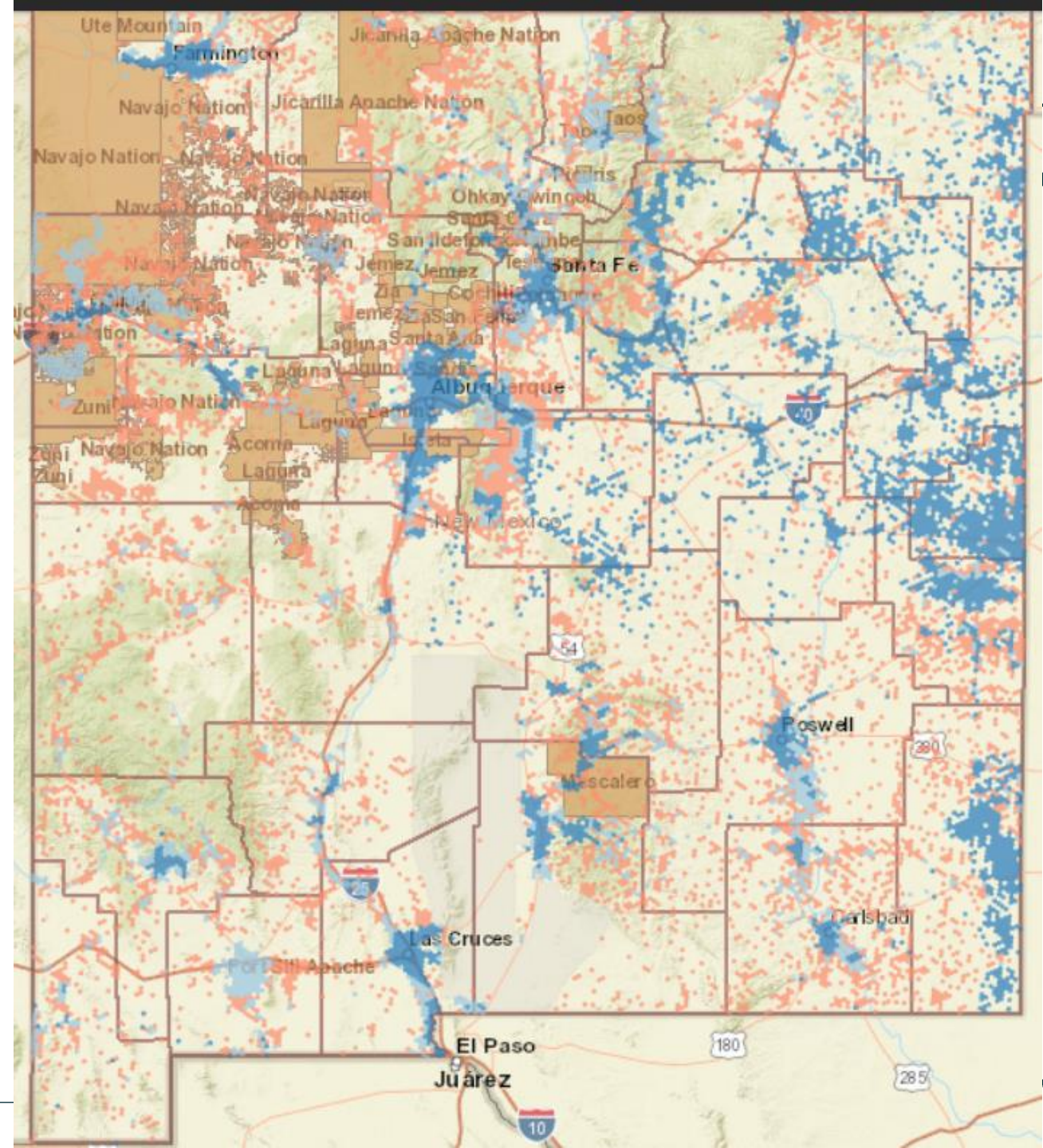
- 100/20+

Underserved

- 25/3-100/20

Unserved \$\$\$

- 25/3 and below
- 802.11
- Satellites



Connect with us

Contact

Drew Lovelace

Alex Trujillo

Email

Drew.Lovelace@connect.nm.gov

Aquiles.Trujillo@connec.nm.gov

Website

(505) 795-1672

(505) 670-3904

Website

<https://connect.nm.gov/>