



Fire Country

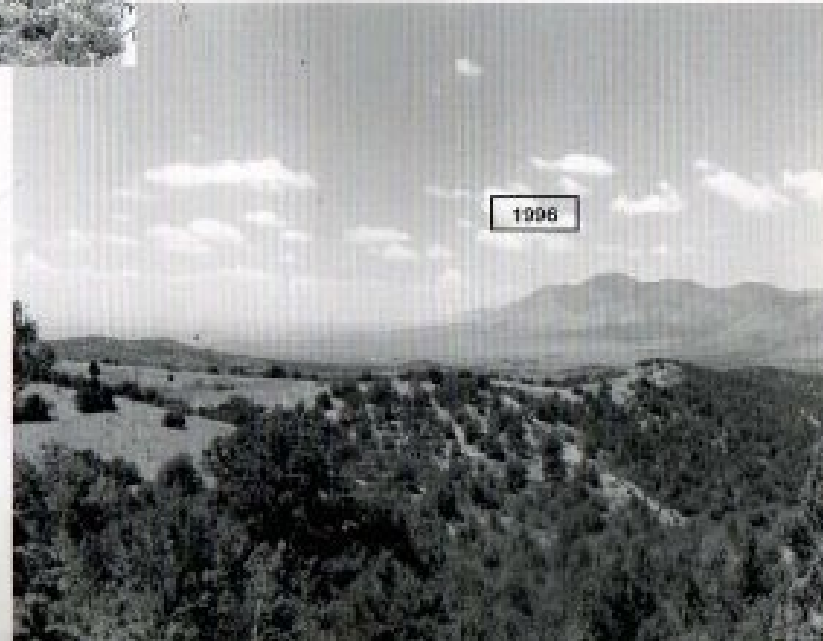
Lincoln & Otero County
Where we live

Welcome to the Sacramento Mountains, homes to many communities that offer spectacular views of mountains and plains and are full of rich history. Bringing visitors back again and again to this sky island. But one aspect of the natural history here might not be interpreted by the casual visitor.

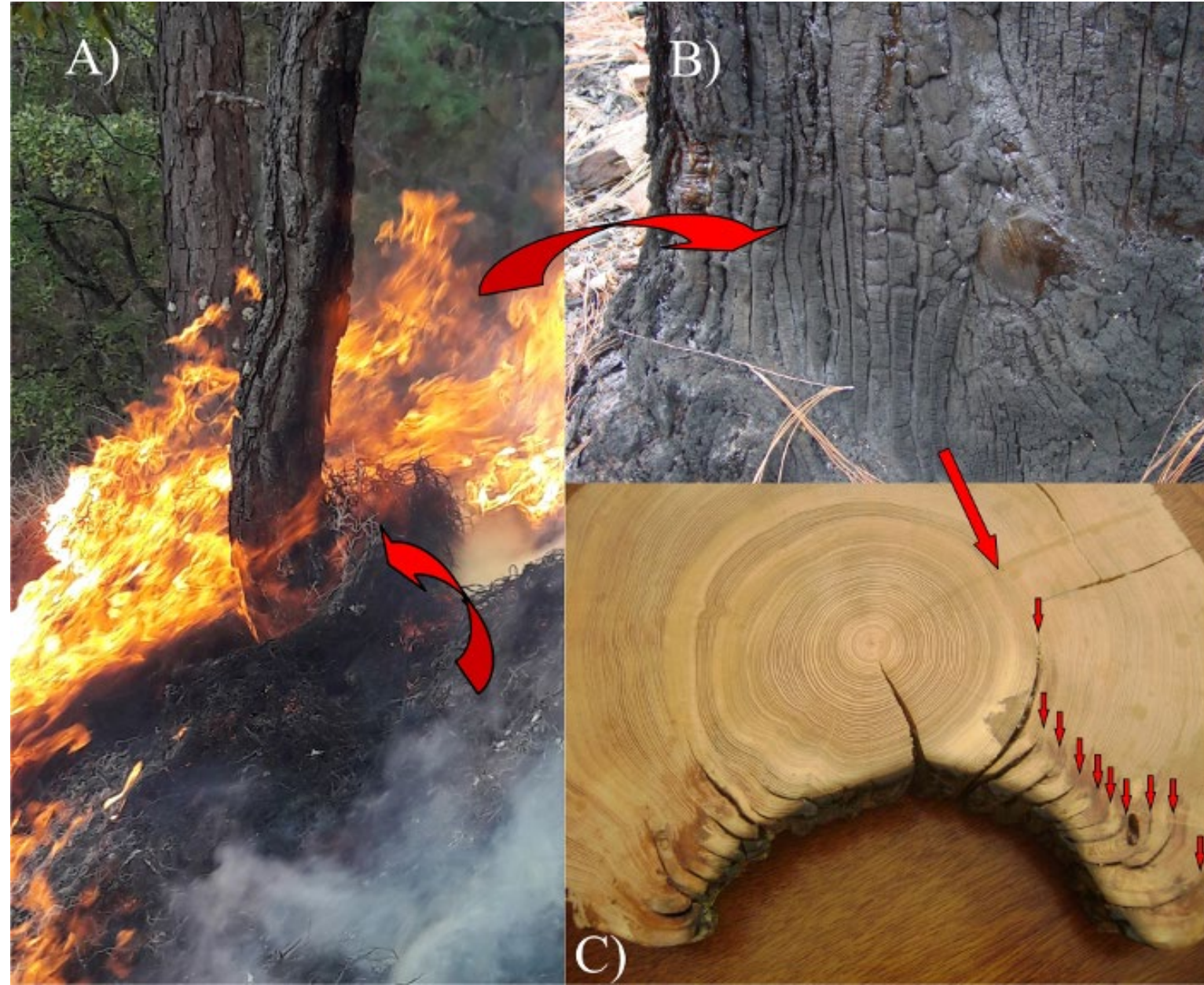


**HISTORIC INCREASES IN
WOODY VEGETATION
IN
LINCOLN COUNTY
NEW MEXICO**

E. HOLLIS FUCHS



Fire scars recorded in the tree's rings across the southwest have shown that Ponderosa Pine forests have an average return of fire ever 5-10 years.

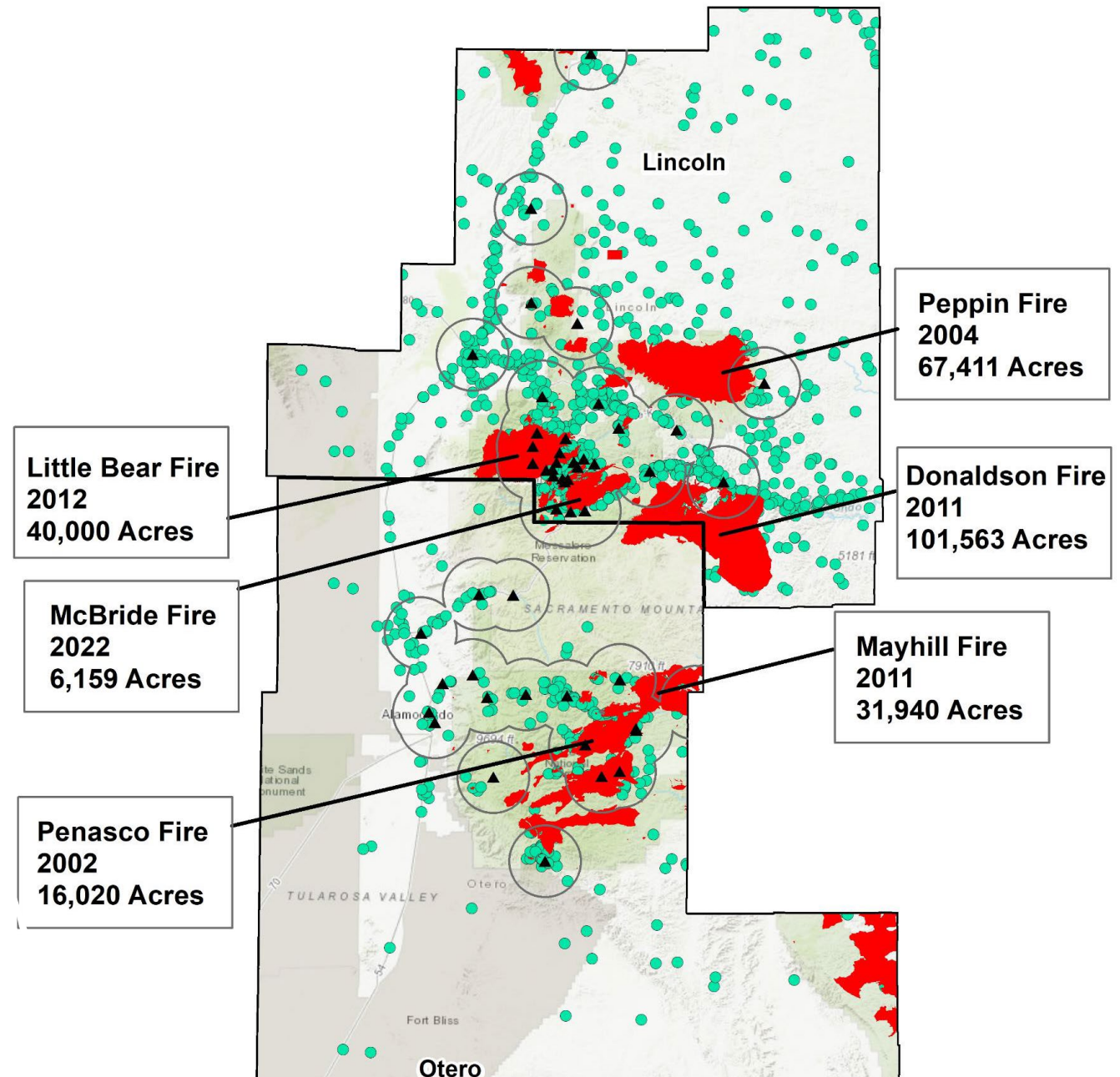


Fortunately, most visitors do not experience a wildfire while they are enjoying the Sacramento mountains. As not enough people are yet prepared for the kind of fires that have happened across the west. Let us use this time together to learn from wildfire that have taken place.

Unfortunately, the expressing “those that do not learn from history are doomed to repeat it” rings deafening loud with each passing year.

If we had used fire points on all ownership, the map would be covered.

- ▲ CAR 2022
- CAR 2022 5-mi Buffer
- Fires on State and Private Lands
- Large Fire Perimeters



Let's take stock in what has happened starting in Lincoln County.

LAND OWNERSHIP WITHIN THE COUNTY IS DIVIDED AMONG FEDERAL, STATE AND PRIVATE AT 1,094,936 297,843 AND 1,696,570 ACRES, RESPECTIVELY. LOCATED IN SOUTH-CENTRAL NEW MEXICO WITH OTERO AND CHAVES COUNTIES ON ITS SOUTHERN BORDER. DE BACA AND CHAVES COUNTIES ARE LOCATED TO THE EAST. TORRANCE AND GUADALUPE COUNTIES FORM ITS NORTHERN BOUNDARY. SOCORRO COUNTY IS ON THE WESTERN BOUNDARY.

Cree 5/7/2000

3 residents destroyed

50 structures threatened

14,545 acres

Wind driven

Kokopelli 5/16/2001

28 residents destroyed

700 structures threatened

985 acres

1300 evacuated

Wind driven



Peppin 5/15/2004

Lighting caused

64,488 acres

12 structures destroyed

9 injuries



Lookout 5/21/2004

5,280 acres

Campfire

5 structures destroyed

1 injury

White 4/4/2011

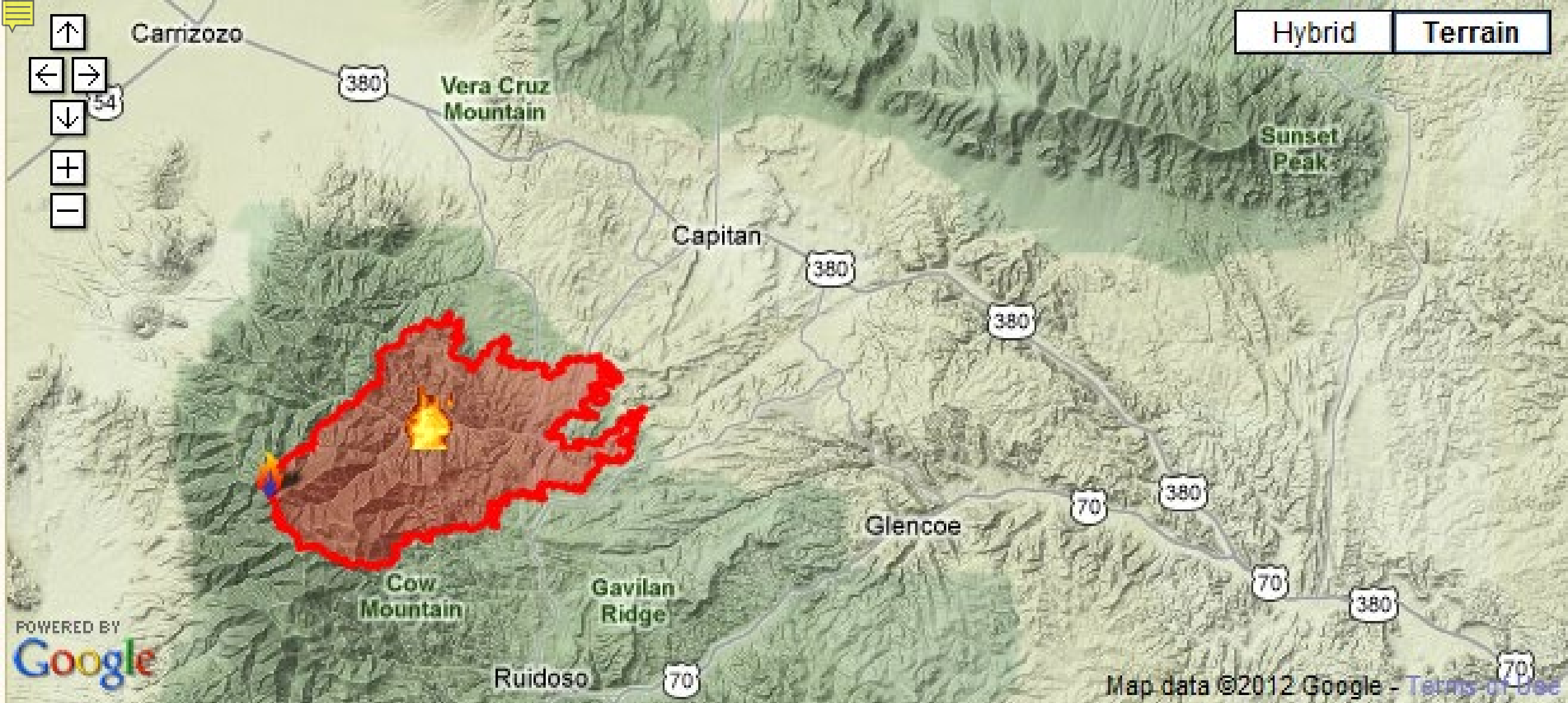
10,341 acres

Caused by fireworks

5 residences destroyed

400 residences threatened

3 injuries



Little Bear 6/4/2012 we will be discussing in the next presentation.

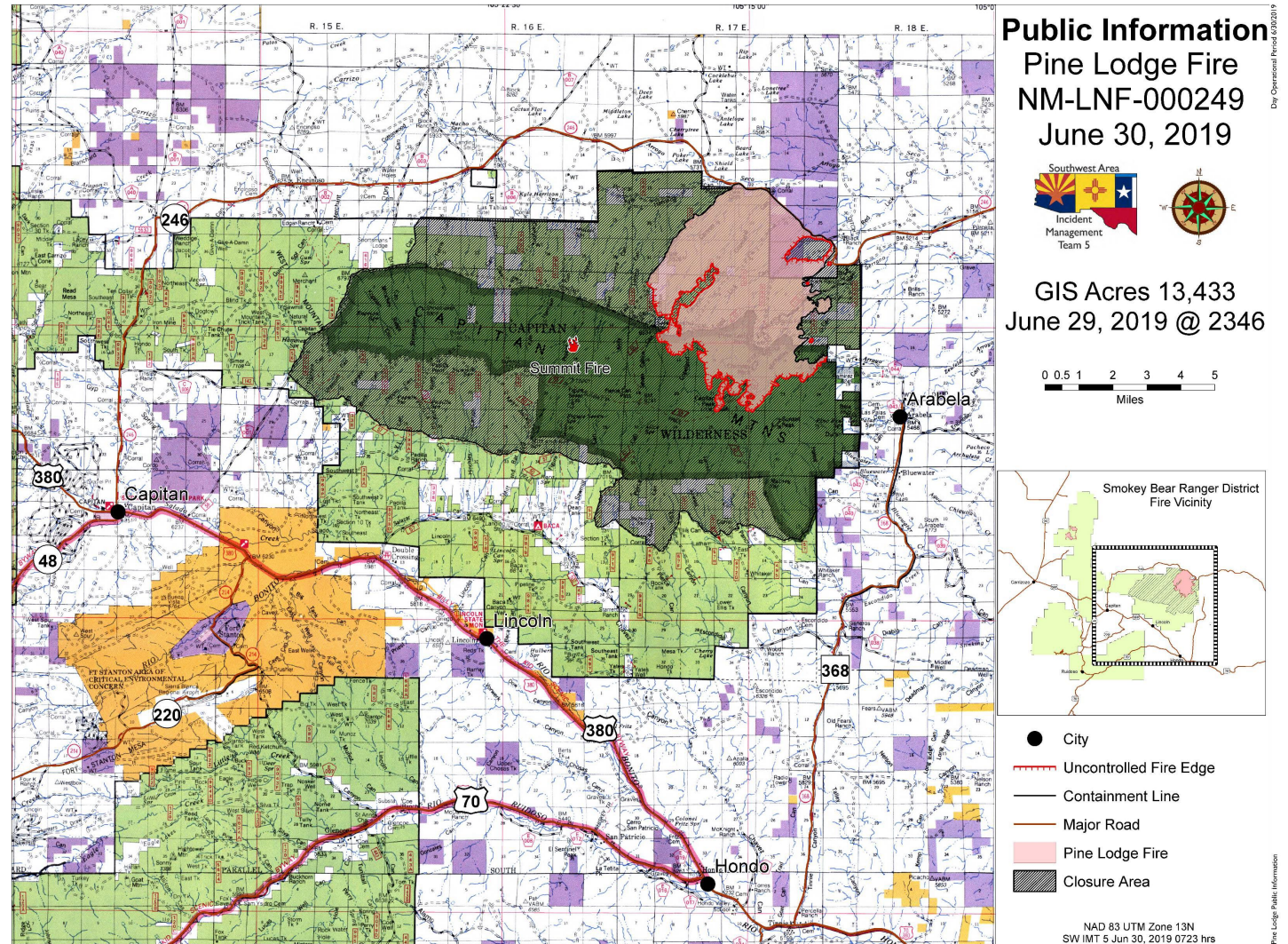
Pine Lodge 6/19/2019

15,045 acres

Campfire

3 structures destroyed

4 injuries

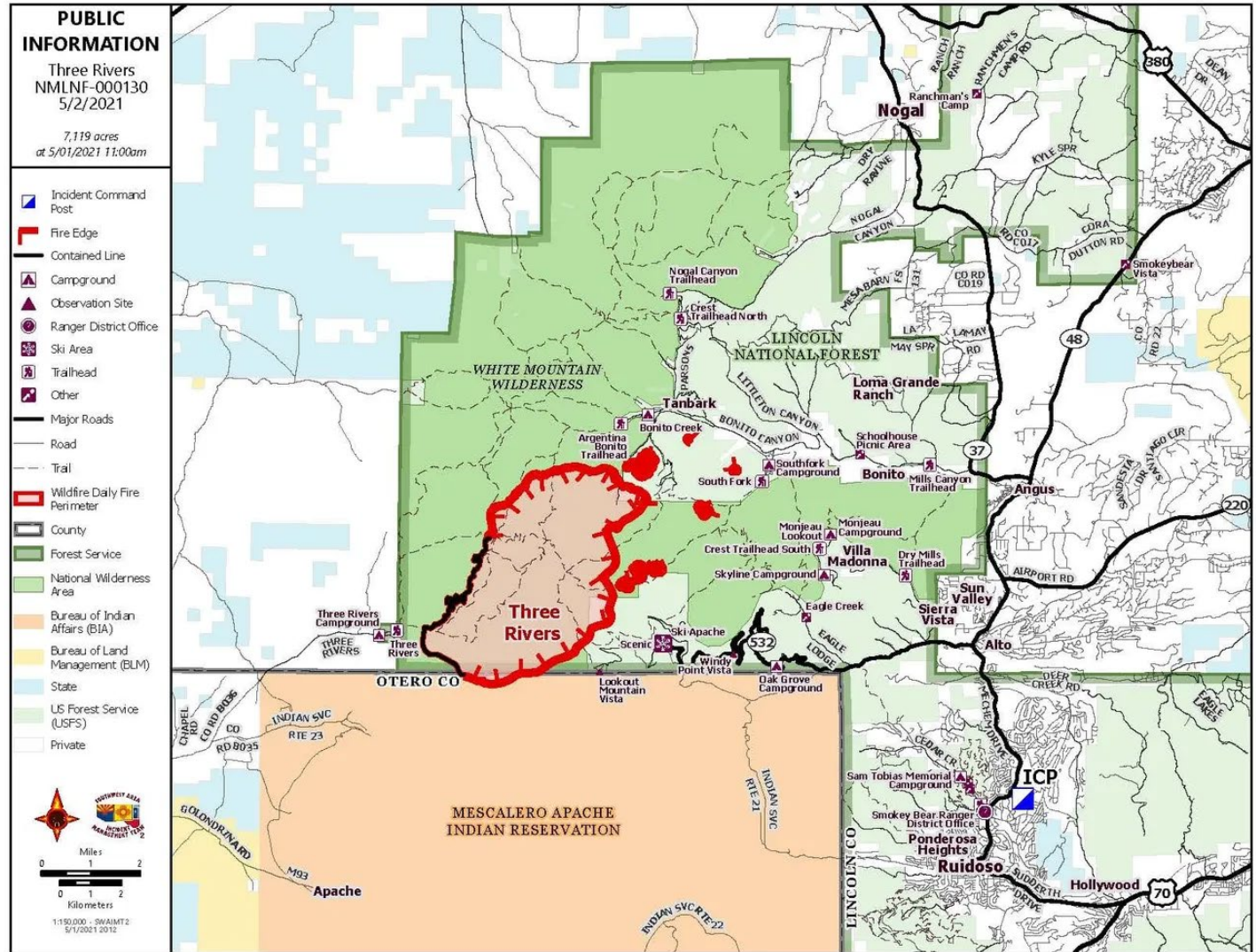


Three Rivers 4/26/2021

Human-under investigation

5,854 acres

If not for two snowstorms
hundreds of homes
threatened.



Nogal Canyon

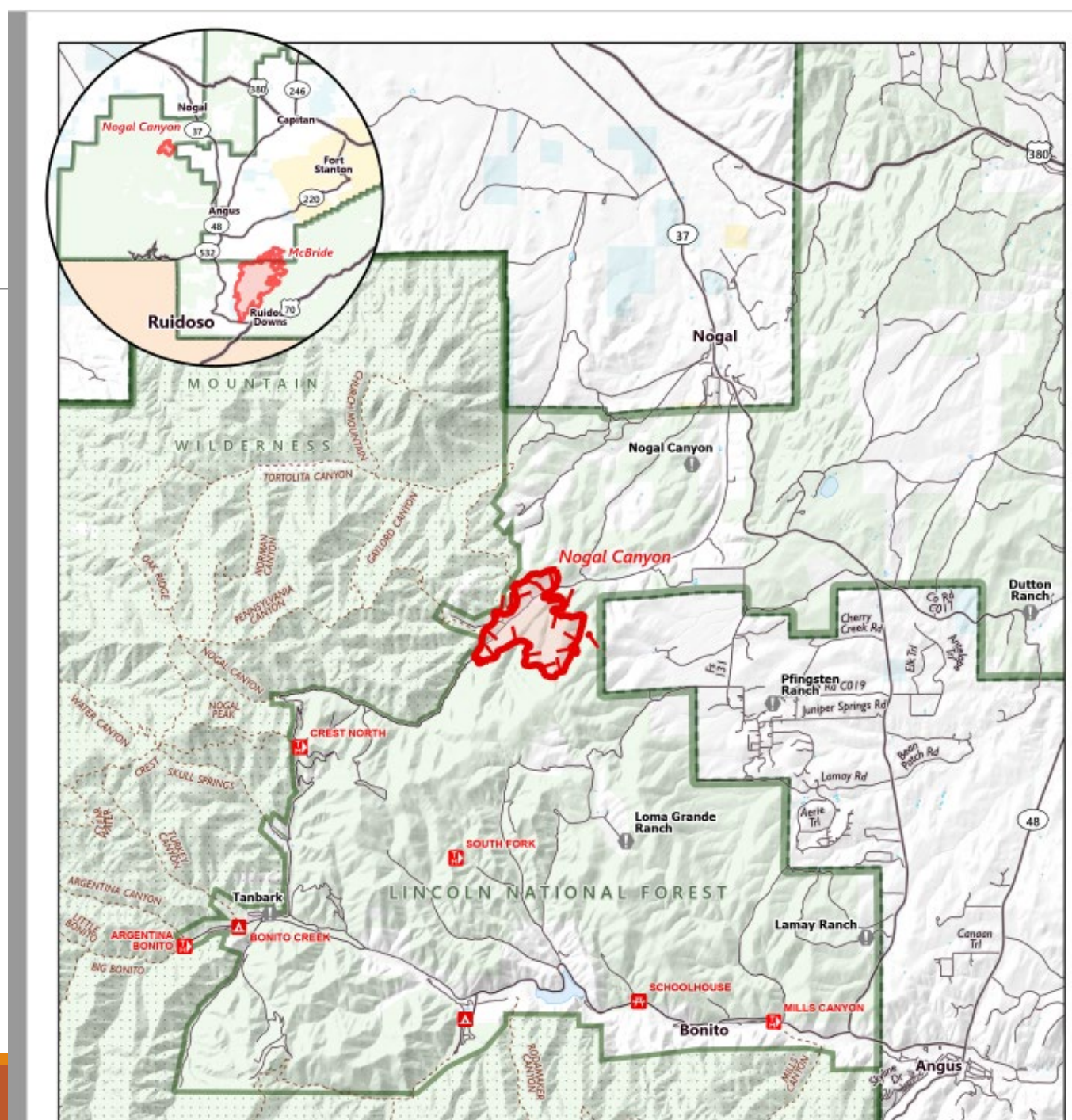
4/12/2022

6 residence destroyed

8 other structures destroyed

420 acres

Powerline



McBride 4/12/2022

Powerline

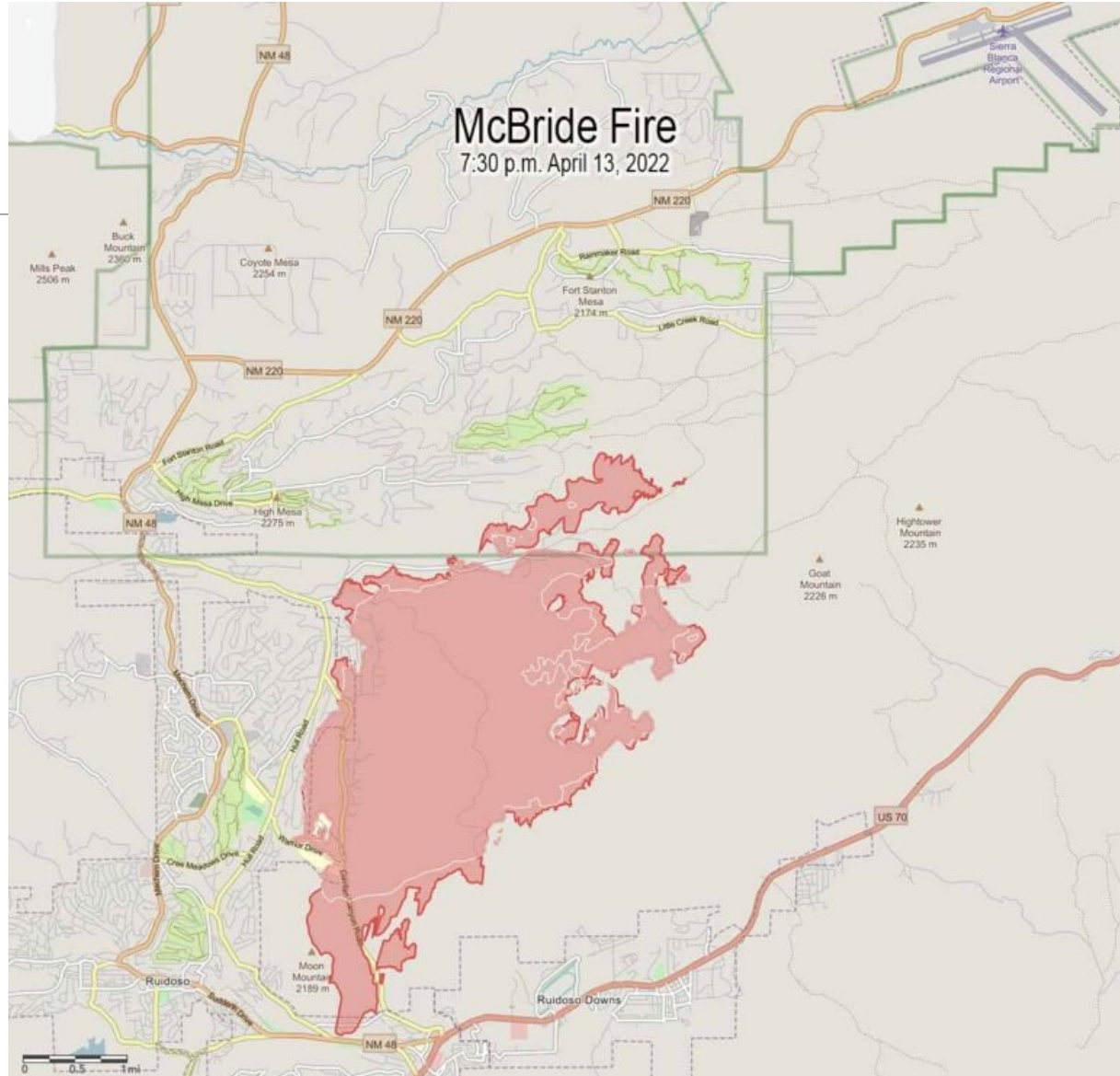
2 deaths

4 injuries

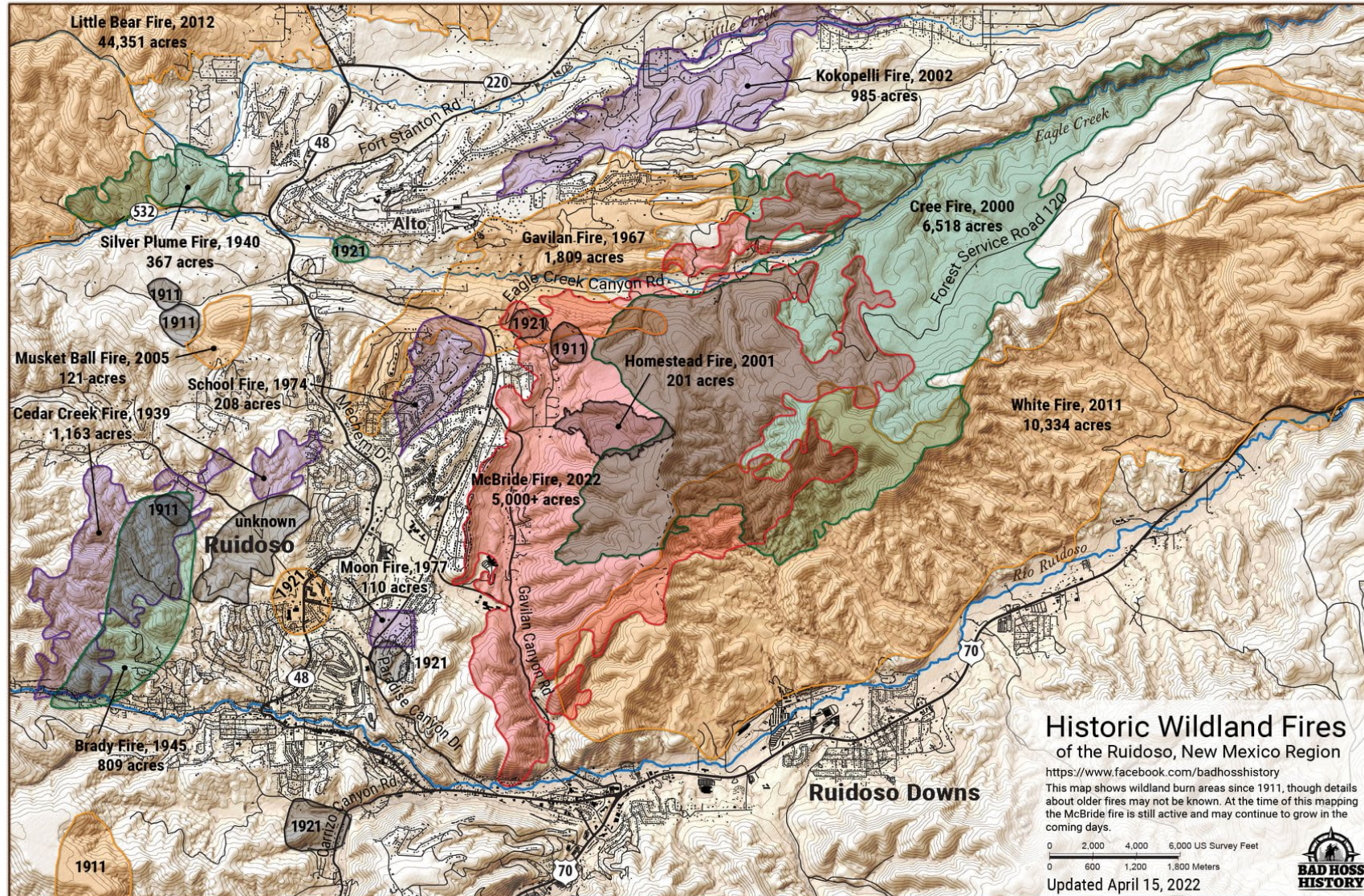
207 homes

400 structures

5,954 acres



This long history of fire should be learned from.



LET'S TAKE STOCK IN WHAT HAS HAPPENED IN OTERO COUNTY.

LOCATED IN SOUTH-CENTRAL NEW MEXICO WITH TEXAS ON ITS SOUTHERN BORDER. LINCOLN, CHAVES, AND EDDY COUNTIES ARE LOCATED TO THE EAST. LINCOLN COUNTY FORM ITS NORTHERN BOUNDARY. SIERRA AND DONA ANA COUNTIES ON THE WESTERN BOUNDARY.

THE COUNTY COMPRISES A DIVERSE LANDOWNERSHIP, WITH THE BLM MAKING UP THE LARGEST PORTION (36.25%). WHITE SANDS MISSILE RANGE (WSMR) COMPRISES 18.5% OF THE WESTERN SIDE OF THE COUNTY. LINCOLN NATIONAL FOREST OCCUPIES (13.14%), MESCALERO APACHE RESERVATION MAKES (10.84%), PRIVATE PROPERTY (11.11%), STATE (8%), AND WHITE SANDS NATIONAL MONUMENT (2.17% OF THE LAND AREA).



BURGETT 4/18/1993

- 5,350 acres
- Human caused
- 11 structures destroyed

SCOTT ABLE 5/11/2000

- 2,9139 acres
- 1 Death
- 80 residences destroyed
- Powerline caused
- Wind Drive

PENASCO 4/30/2002

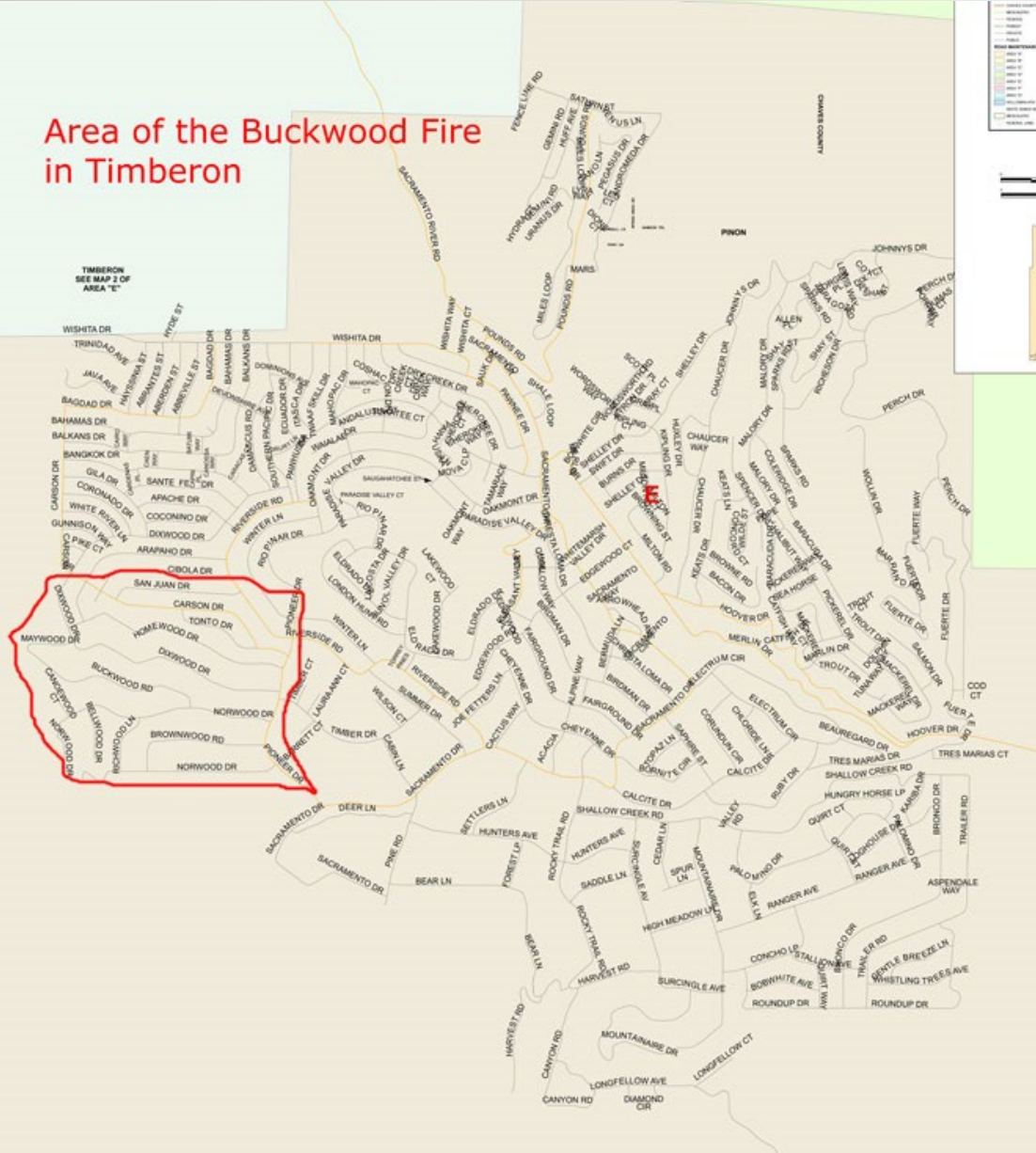
- 15,904 acres
- 13 residences destroyed
- 33 other structures destroyed
- 4 injuries
- Human Caused

WALKER 5/9/2003

- 3,434 acres
- 3 residences destroyed
- 16 other structures destroyed
- 1 injury
- Human Caused

BUCKWOOD 5/6/2009

Area of the Buckwood Fire
in Timbron



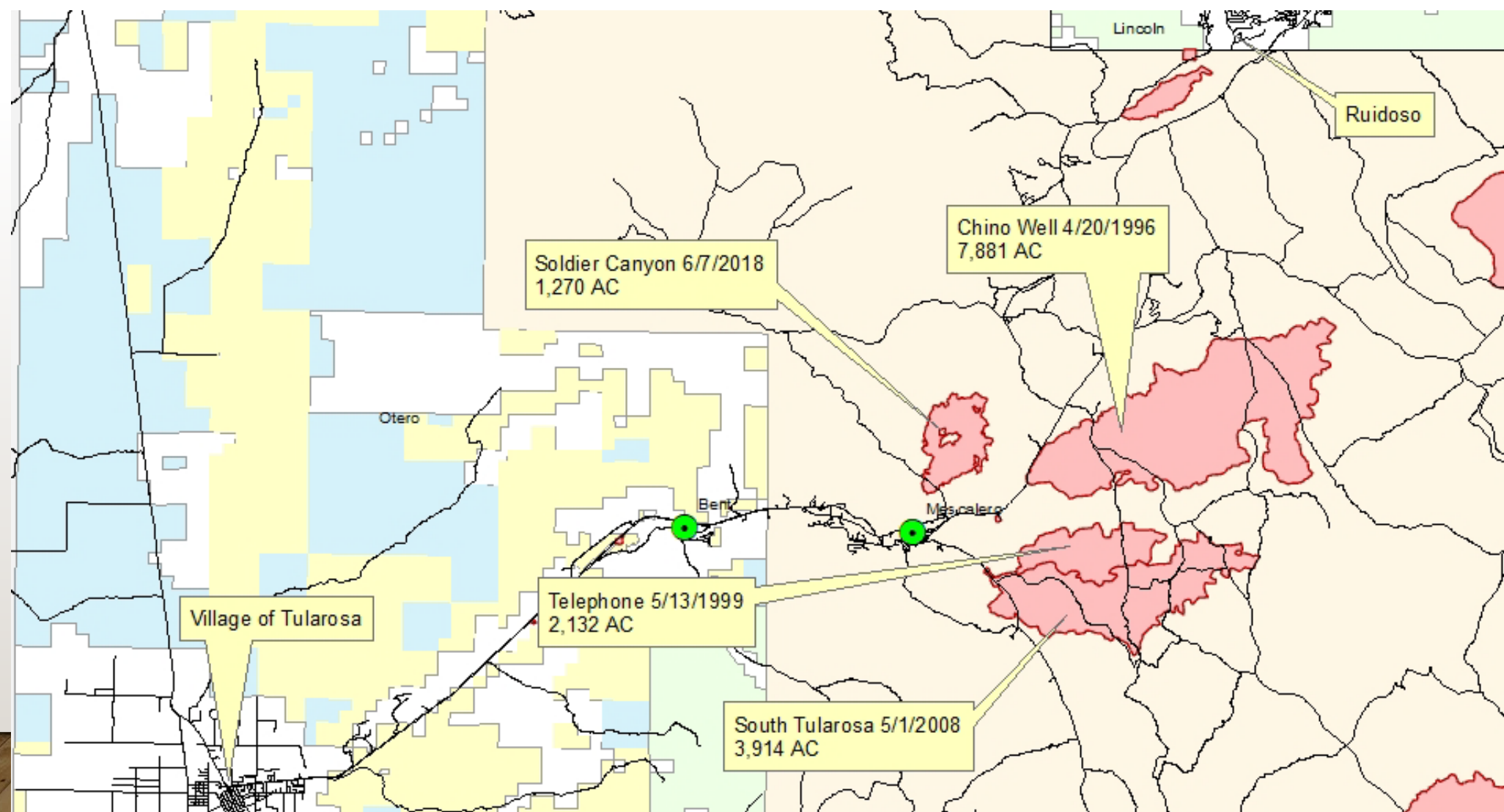
- 3 residences destroyed
- 5 other structures destroyed
- 112 acres
- Human caused

MAYHILL 5/9/2011

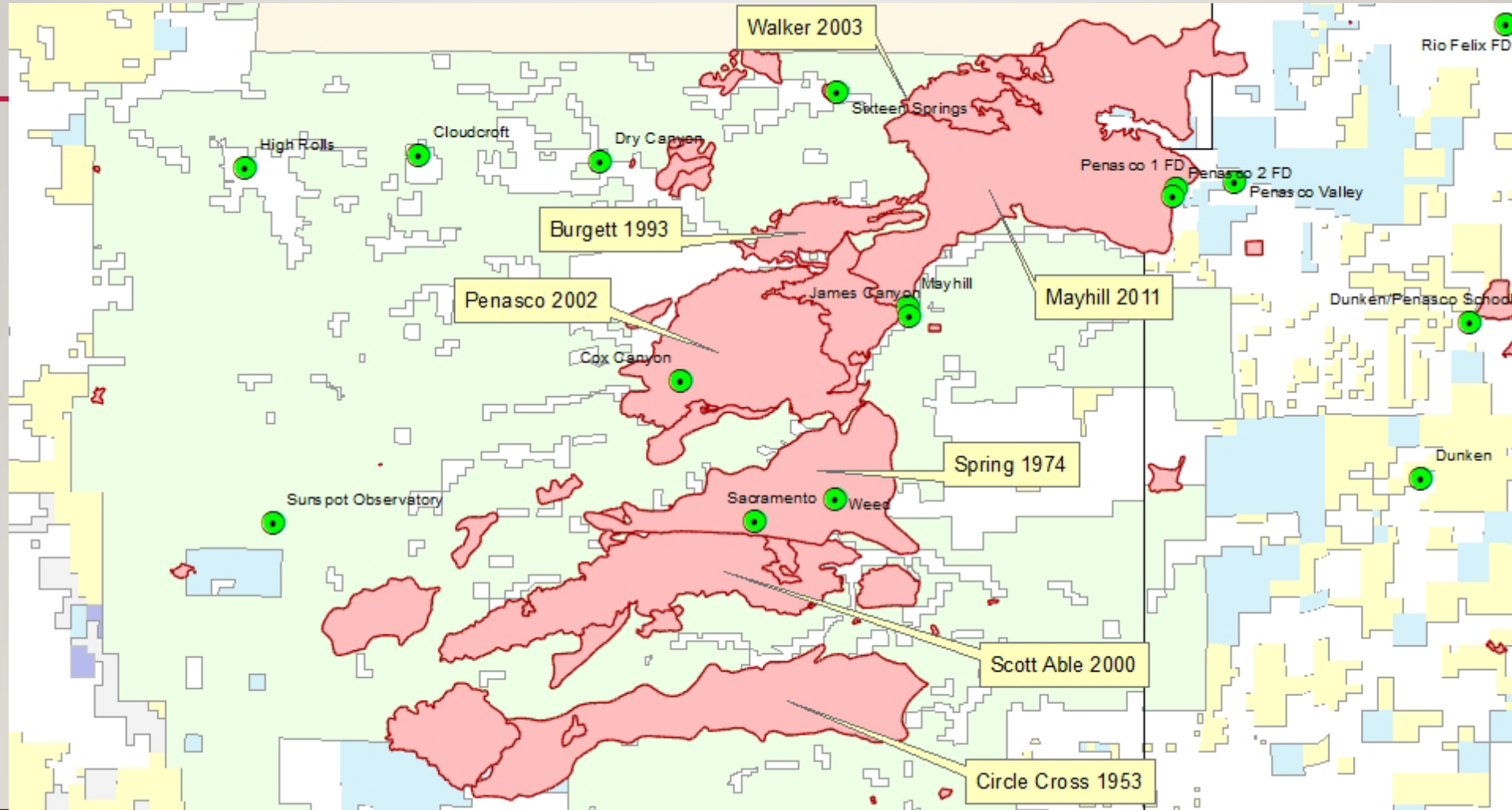
- 3 residences destroyed
- 3 other structures destroyed
- 12 injuries
- 31,861 acres

TIMBERON 7/13/2016

- Human caused
- 290 acres
- 50 residents destroyed
- 20 other structures destroyed

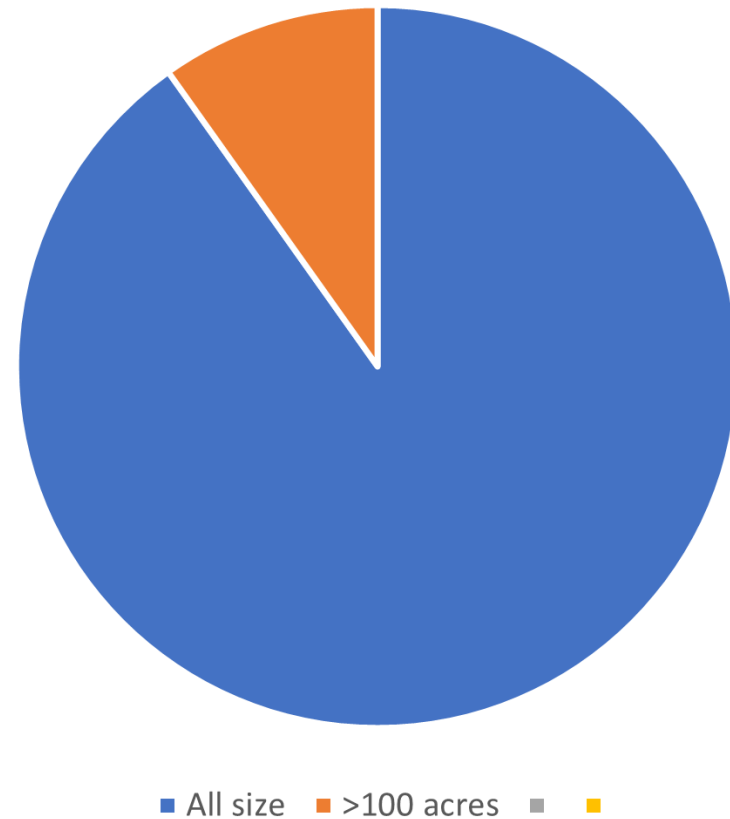


OVERVIEW OF OTERO COUNTY LARGE FIRES RELATIVE TO COMMUNITIES.



Keep in mind we have been focused on historically large fires, but more than 80% of fire starts were stopped at Initial Attack. What would we be discussing if fire weather days increase in frequency?

Wildfires 1986 to present Lin & Otero



Can we do more to reduce the occurrence of unwanted fires through prevention education YES!





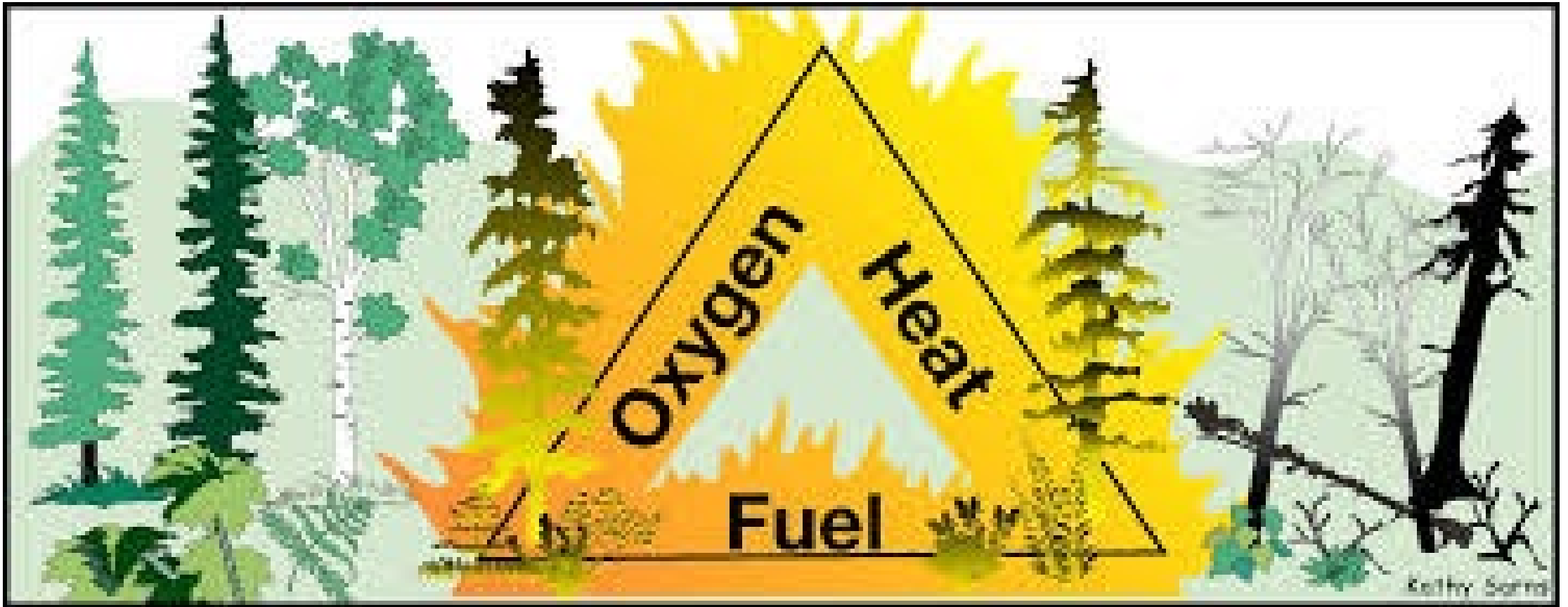
Even when the only cause of fire is Lighting, 747 fire were determine to be caused by lighting in the two counties.



So what is the cause of the “Wildfire Crisis”?



The only thing we can control is FUEL.



In the WUI everything is fuel. Structures are one of the most densely packed dry fuel, that is why home hardening is a must.



EMNRD-Forestry Division
Nick Smokovich – Capitan District Forester
POB 421
304 West 2nd Street
Capitan, NM 88316
Office (575)-354-2231
Cell (575)-937-0839
nick.smokovich@emnrd.nm.gov

Thank you for your time,
please take what you learn
at the WUI Summit back
home and share it as the
ambassador to your
community.

