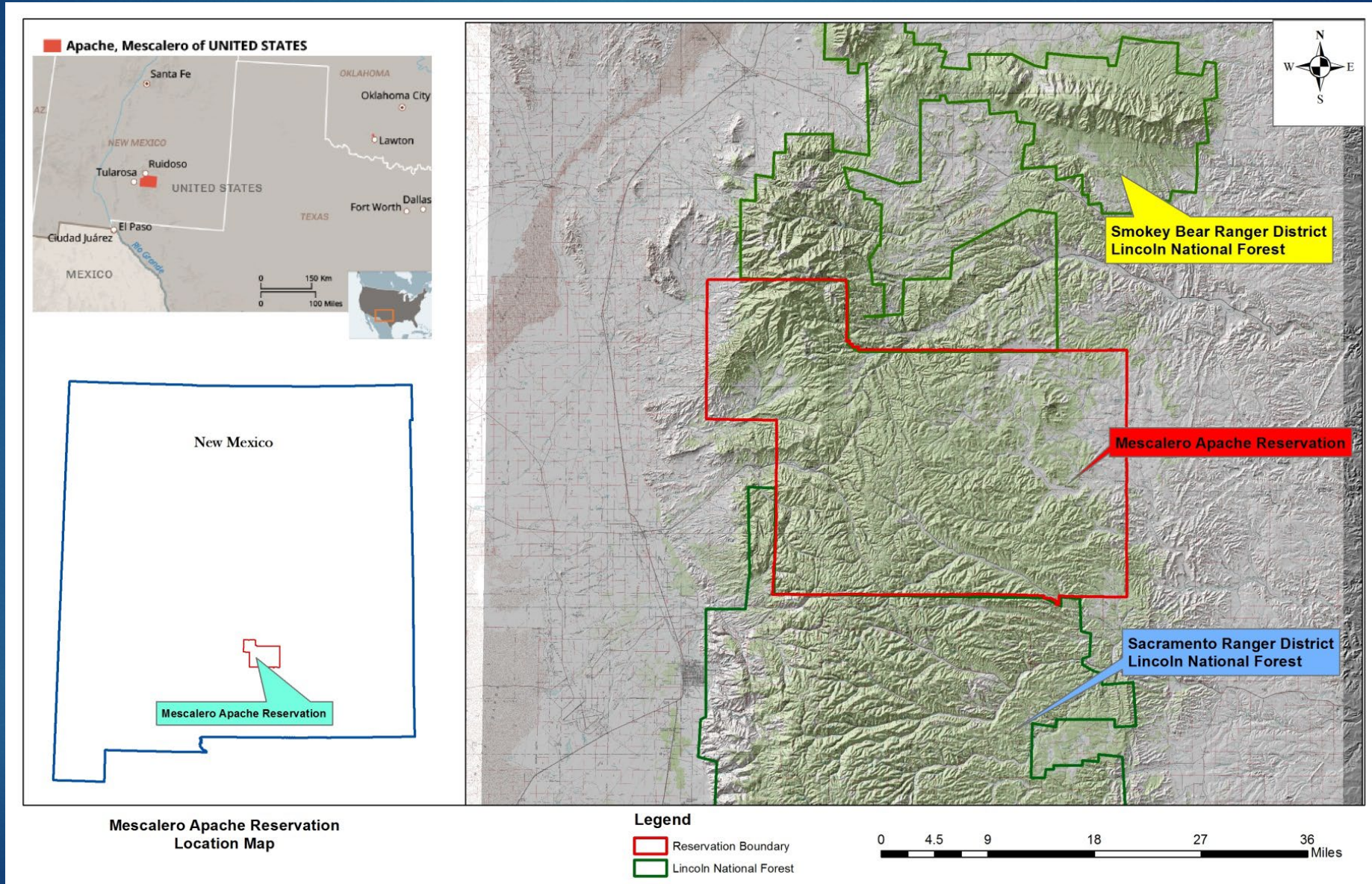




MAT - Division of Resource Management & Protection

Mitigation on the Mescalero Apache Reservation

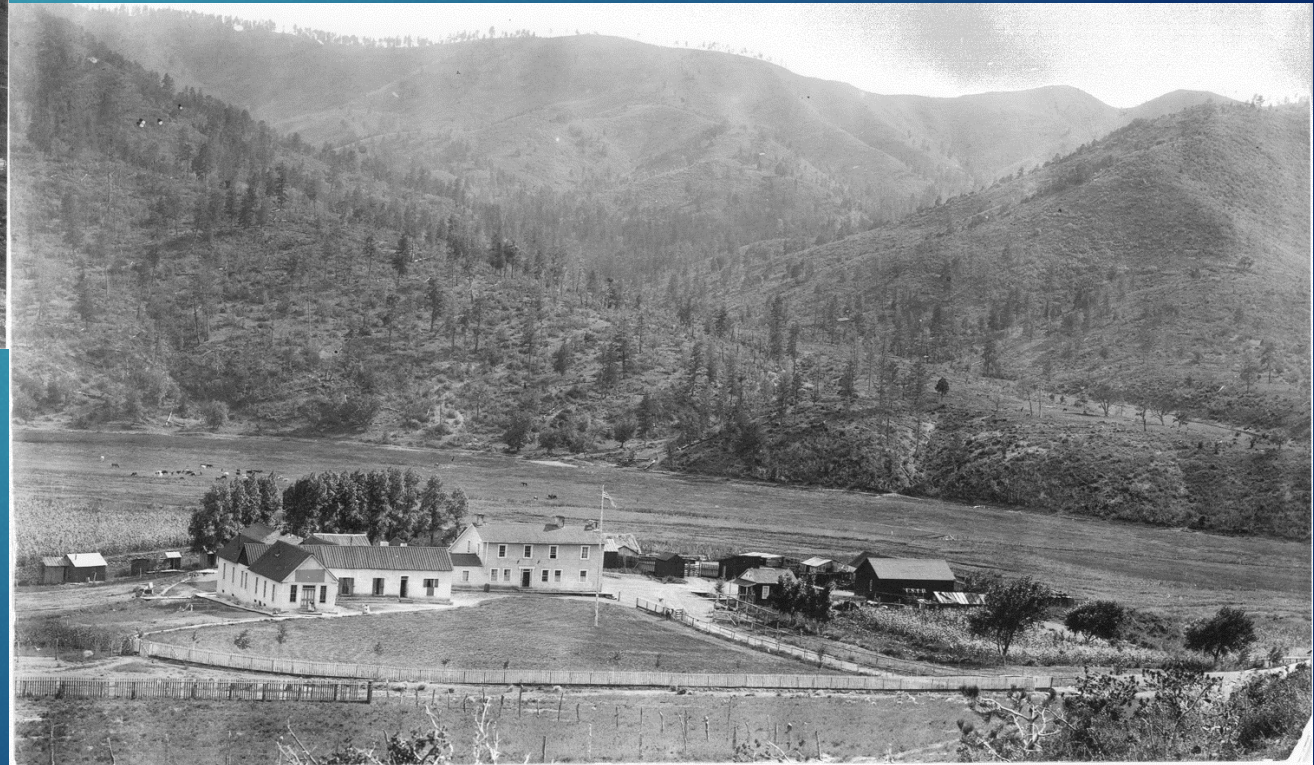
Mescalero Apache Reservation, ~460,000 Acres



Many changes in our landscape...



Photos taken circa 1900, when the floodplains where the main town of Mescalero is now located were largely uninhabited..



Landscape Changes

- Draining of wetlands & installation of tile drains in 1930's Civilian Conservation Corps (CCC) project
- Development into floodplains and wetlands
- Increased tree densities on slopes around Mescalero
- Introduction & proliferation of non-native species, such as Siberian Elm



Work started by “armoring” our southern boundary – concerns for defoliators & wildfire

View on the Border

Mescalero Reservation

Lincoln N.F.



Nogal Watershed Improvement Project

- reducing forest density and increasing ground cover



Commercial harvest used as first line management tool



Uneven-aged management - Preferred



Also focus on removing severe dwarf mistletoe infection



Follow-up fuels treatments with Tribal Thinning Crew



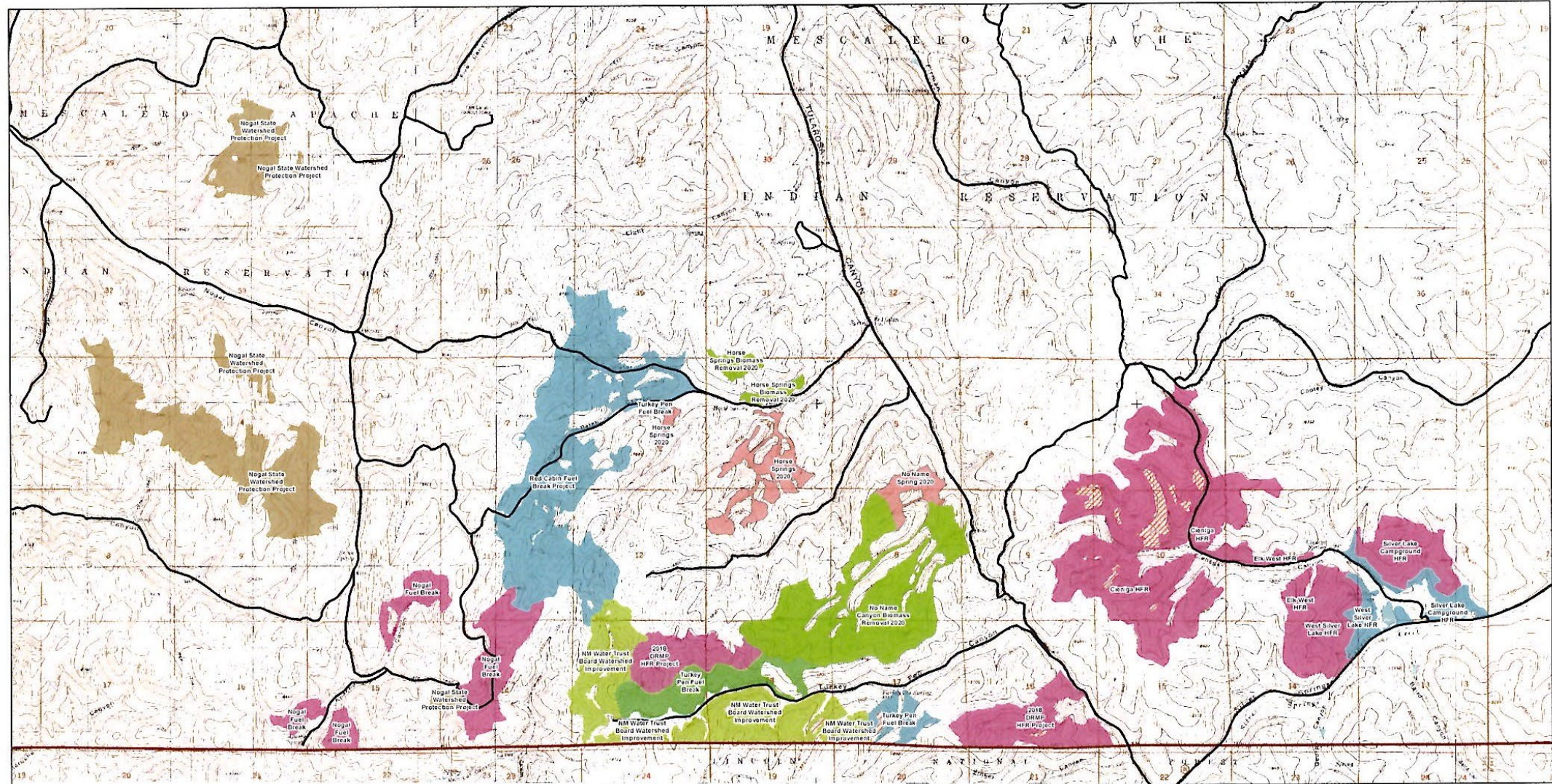
And prescribed burning, when we can...



& Coordination with Youth Programs



Hazardous Fuels Reduction Treatments 2014-2019



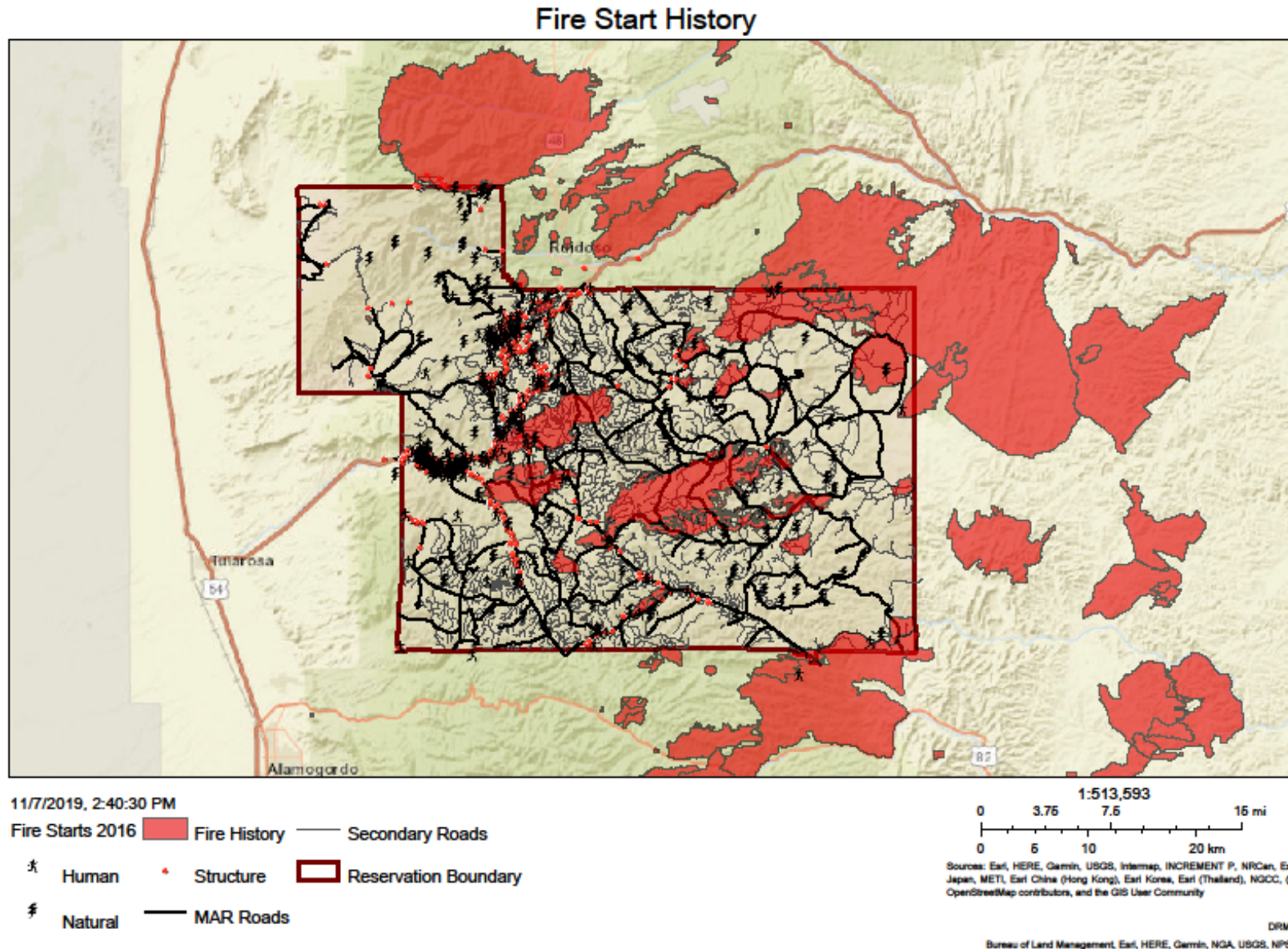
Legend

- | | |
|---|--|
| ■ BIA, Thinned, Lop, Pile, Completed. 1,104.2 ac | ■ Planned NM State, Biomass Removal and Thinning: 670.2 Acres |
| ■ BIA, Thinned, Lop, Pile, Completed. 189.5 ac | ■ Planned NM State, Thinning Only: 219.8 Acres |
| ■ BIA, Thinned, Lop, Scatter, Completed. 2612.7 ac | ■ Reservation Boundary |
| ■ BIA, Thinned, Lop, Scatter, Completed. 380.5 ac | |
| ■ NM State, Thinned, Lop, Pile, Completed. 500 ac | |
| ■ NM State, Thinned, Lop, Scatter, Completed. 920 ac | |

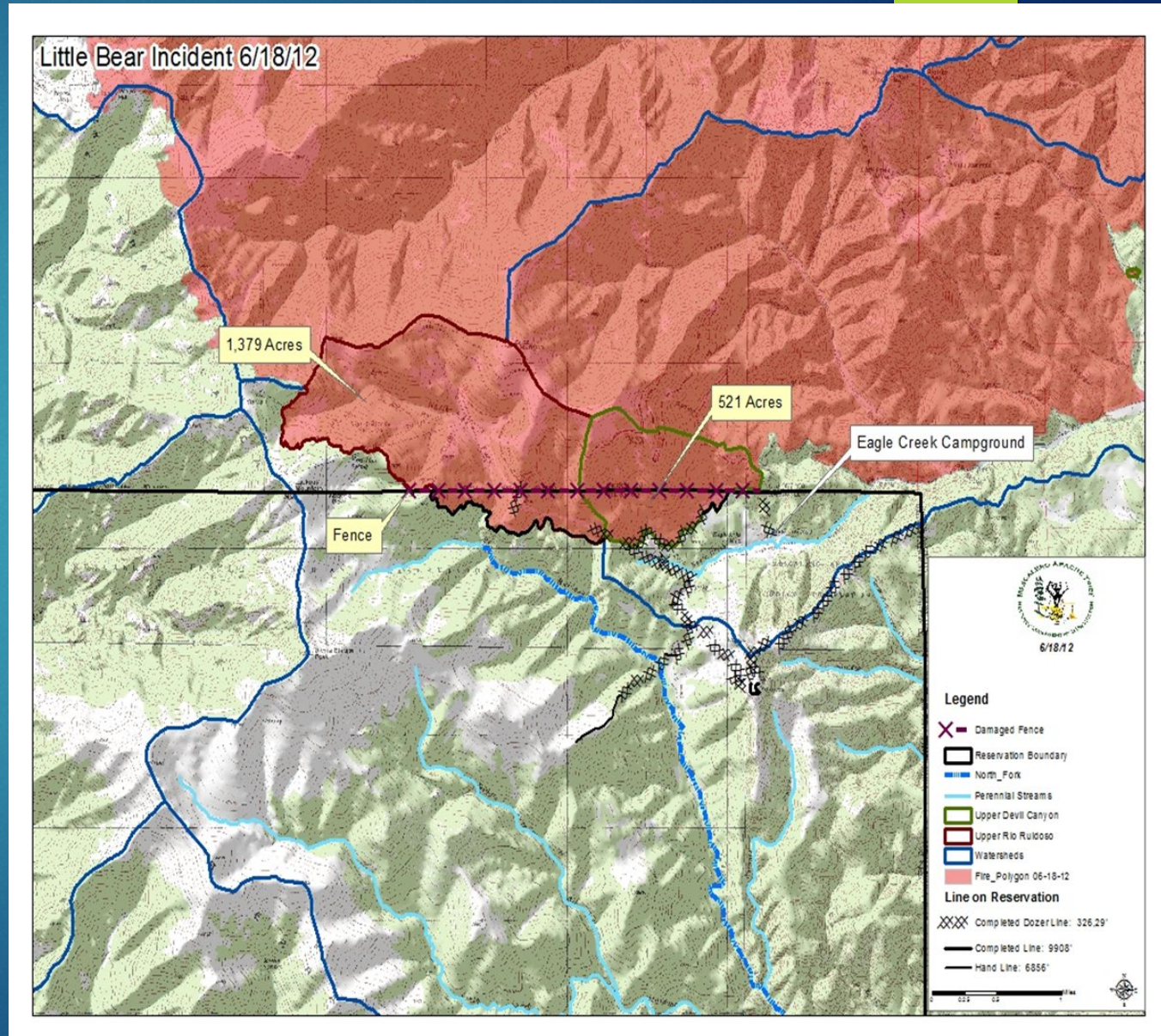
Total Completed Acreage: 5,706.9



We Have Our Share of Wildfires



2012 Little Bear Fire, started along the boundary with Lincoln Natl Forest





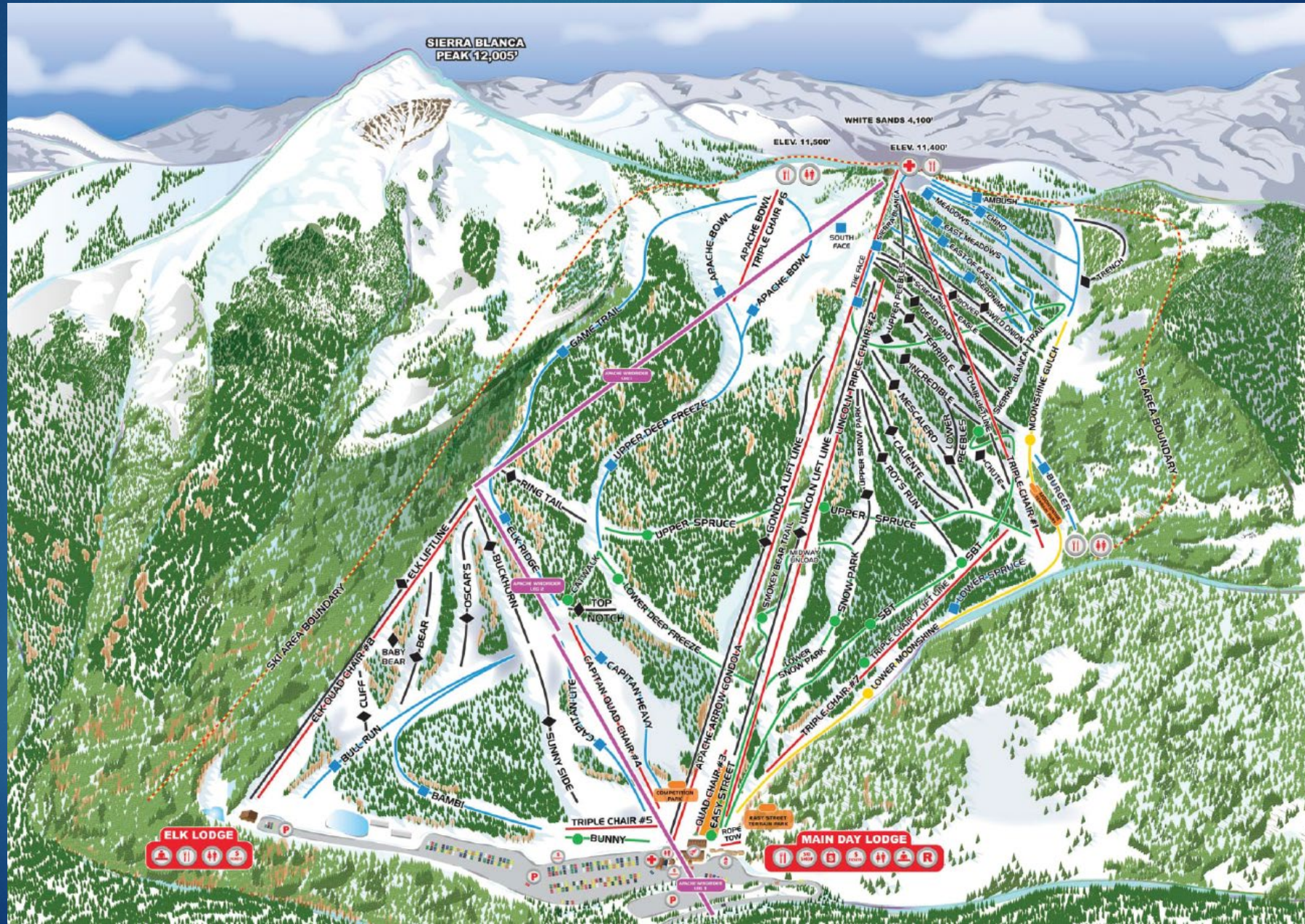
The 2012 Little Bear Fire
started in White Mtn
Wilderness, west of the Tribal
ski area, Ski Apache.



Fire burned through Ski Apache causing damage to Gondola, other equipment...



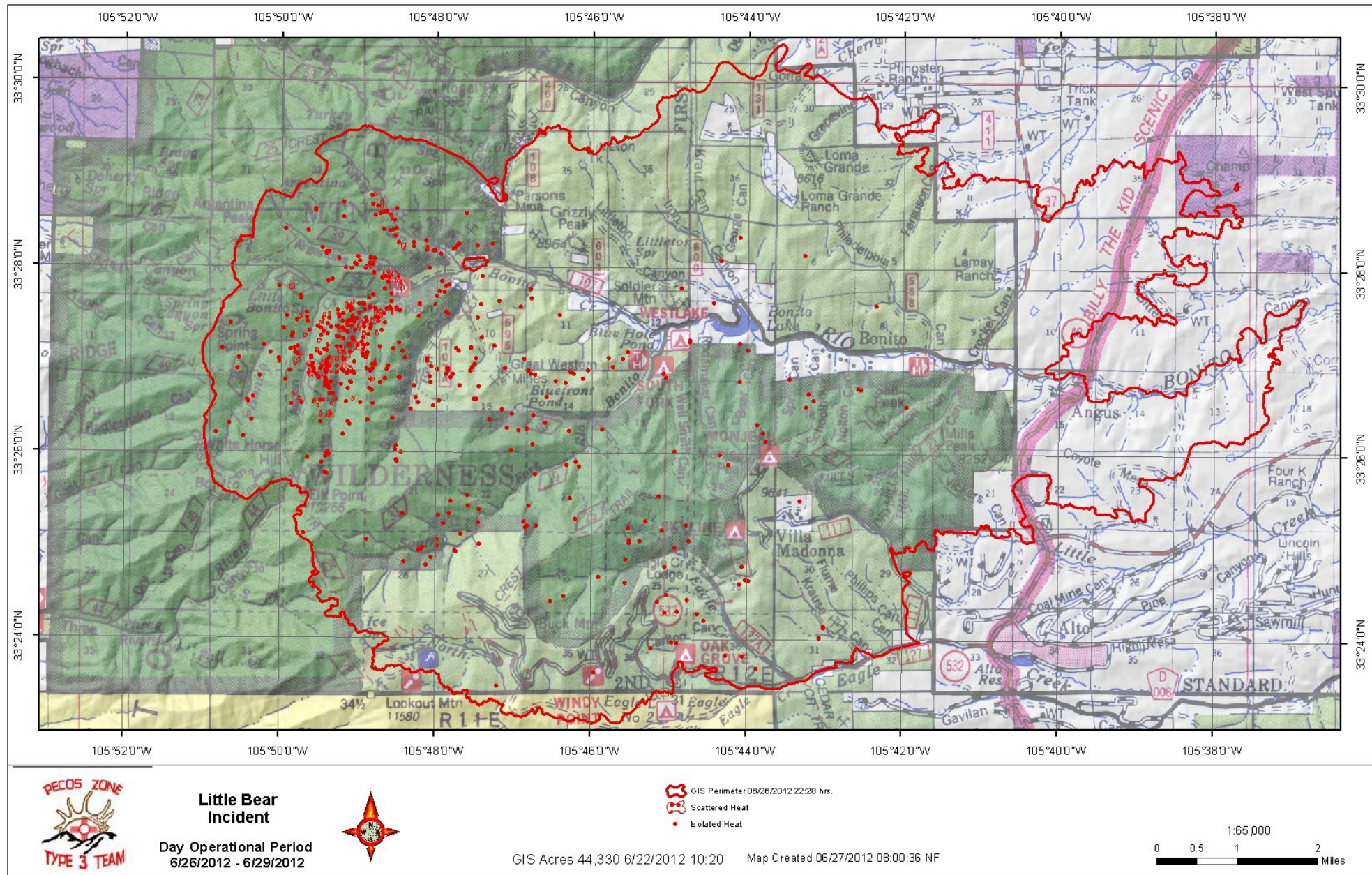
100



Wildfire burned into Alto and Ruidoso



More than 44,000 acres and 244 residences burned.



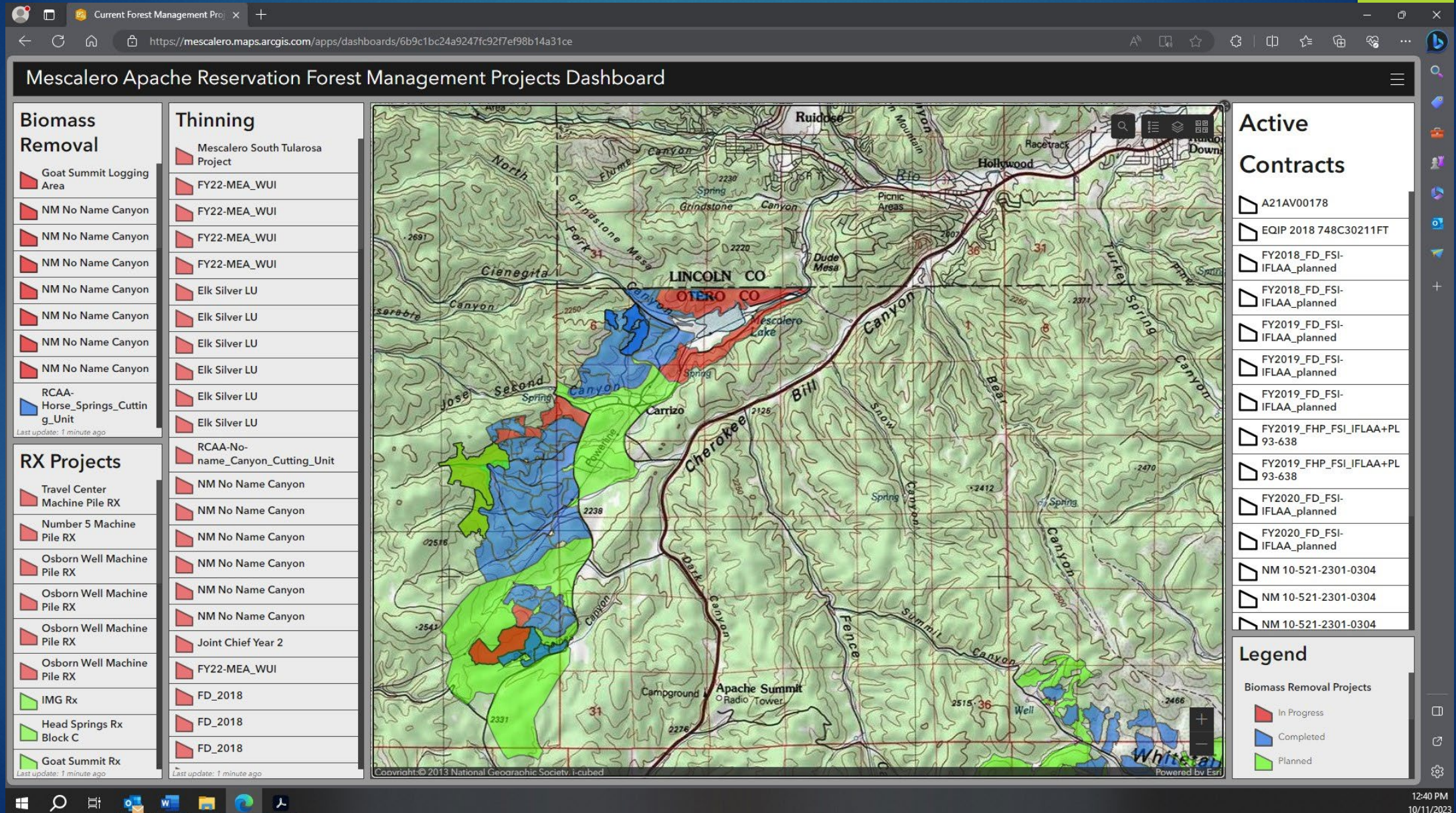
Ski Apache – 2019 Removal of Hazardous Trees in Burned Area



Problems keeping snow on slopes...



Work ongoing now along northern boundary



Soldier Canyon
Fire, June 2018,
approximately
1,500 acres burned
within main
community of
Mescalero



Ongoing problems with post-fire flooding



And our community located in floodplain



What else are we doing to mitigate?

FUTURE PLANS:

- ▶ Drainage Management Study
- ▶ Recommendations to Tribal Council to locate new buildings and residences OUT OF HARMS WAY, i.e. Zoning
- ▶ Educate our public

And That's All Folks! - 'Ixéhe





For more information, contact:
Thora Padilla, Director
Division of Resource Management and Protection
Mescalero Apache Tribe
575-464-4711
thora@mescalerodrmpp.org