

A composite image showing a firefighting aircraft dropping a red fire retardant over a residential street. The sky is blue with scattered white clouds. In the background, there is a thick layer of smoke rising from the ground. The foreground shows a street with trees and a stop sign on the right.

Local Response and Recovery in the Bosque

Valencia County Catastrophic Wildand Fires

Rio Grande Fire April 17, 2025

Cotton/Desert Willow Complex Fires June 21, 2025

Presenters

- Valencia County Fire Department
 - Matthew Propp - Fire Chief
 - Rob Barr - Wildland Captain



Valencia County Fire Season 2025

	Fire Date	FireMonth	Fire Name	District	Acres	Burn Status
1	1/4/2025	January	Rosey	7	.4	Red Flag Warning
2	1/4/2025	January	Academy	2	.45	Red Flag Warning
3	1/5/2025	January	Barnacle	3	.5	No Burn Day
4	1/5/2025	January	Holy Snail	1	.1	No Burn Day
5	2/16/2025	February	Hot Dog	7	.5	Burn Day
6	2/22/2025	February	Crunch	2	1.5	Burn Day
7	2/25/2025	February	Two Ponies	2	.5	Burn Day
8	2/28/2025	February	Fence	7	2	Burn Day
9	2/28/2025	February	Mule	3	2	Burn Day
10	2/28/2025	February	ManyNinos	7	1	Burn Day
11	3/3/2025	March	Goathead	2	.1	Red Flag Warning
12	3/3/2025	March	Pole	7	.41	Red Flag Warning
13	3/3/2025	March	WooWoo	2	.25	Red Flag Warning
14	3/9/2025	March	Meatball	1	.75	Burn Day
15	3/15/2025	March	4 Corners	1	1.5	No Burn Day
16	3/15/2025	March	Balloon	1	1.5	No Burn Day
17	3/15/2025	March	2 Puppies	3	.2	No Burn Day
18	3/18/2025	March	Tin Man	7	2.75	Red Flag Warning
19	3/20/2025	March	Spooky	7	.27	No Burn Day
20	3/21/2025	March	Styrofoam	3	.3	No Burn Day
21	3/23/2025	March	Lost Dog	7	.5	No Burn Day
22	3/24/2025	March	Yippie	1	1	Burn Day
23	3/24/2025	March	Karr	2	.75	Burn Day
24	3/24/2025	March	Goober	13	.25	Burn Day
25	3/26/2025	March	Tiempo	7	3.25	No Burn Day
26	3/31/2025	March	Strawberry4	7	3.06	No Burn Day
27	4/2/2025	April	Flagstone	2	.25	No Burn Day
28	4/5/2025	April	Scared Horse	1	.5	No Burn Day
29	4/9/2025	April	Sand Dune	2	.5	No Burn Day
30	4/9/2025	April	Spring	7	.2	No Burn Day
31	4/10/2025	April	Water Works	2	1	No Burn Day
32	4/14/2025	April	Paint	7	.8	No Burn Day
33	4/17/2025	April	Rio Grande	5	61.3	Red Flag Warning
34	4/23/2025	April	Repeat	1	2.5	No Burn Day
35	4/25/2025	April	Lost	1	.2	No Burn Day
36	4/25/2025	April	Box	2	1.3	No Burn Day
37	5/21/2025	May	Grape	7	.5	No Burn Day
38	5/23/2025	May	DragonsBreat	2	.5	No Burn Day
39	5/27/2025	May	TreeTop	2	.1	Burn Day
40	5/30/2025	May	Rosy	7	.4	Burn Day
41	6/1/2025	June	Battery	3	.22	No Burn Day
42	6/12/2025	June	Canoe	3	.1	Burn Day
43	6/18/2025	June	Kid	3	15	Burn Day
44	6/21/2025	June	Cotton	3	95	No Burn Day
45	6/22/2025	June	Cotton2	3	142	No Burn Day
46	6/23/2025	June	Ace	2	.7	No Burn Day
47	8/2/2025	August	Bush	9	.1	Burn Day
48	8/28/2025	August	Valentin	7	9	Burn Day

48 Fires

Total: 357.96 acres




Notable Fires

- 1/5/25
- Barnacle Fire
- 1st bosque fire of the year
- .5 acre



Notable Fires

- 2/28/25
- 3 escaped field fires
- Burn Day
- 5 acres total



- 2/28/25
 - 3 escaped field fires
 - Burn Day
 - 5 acres total
- 



Notable Fires

- 3/3/25
- Red Flag Warning
- 3 brush fires
 - 2 from powerlines



Humidity	10%
Hi Lo	-% -%
Pressure	29.70" ↑



Notable Fires

- 3/18/25
- Red Flag Warning
- Tin Man Fire in Valencia County
 - Multiple structures threatened
- Isleta Pueblo
 - 2 houses, outbuildings,
 - hay barn burned
- Pond Fire Northern Socorro County
 - 100 acres, no structures threatened



Notable Fires

- 3/24/25
- Burn Day
 - 3 escaped brush fires with
 - Structures threatened and
 - Property damage



60 day Burn Ban enacted March 25 - May 24

Notable Fires

- 3/26/25
- Tiempo Fire
- Escaped trash burn

Multiple structures threatened

- 5th wheel camper burned
- Pump house burned
- Fence burned





Multiple homes destroyed in Los Lunas from the Cotton Fire

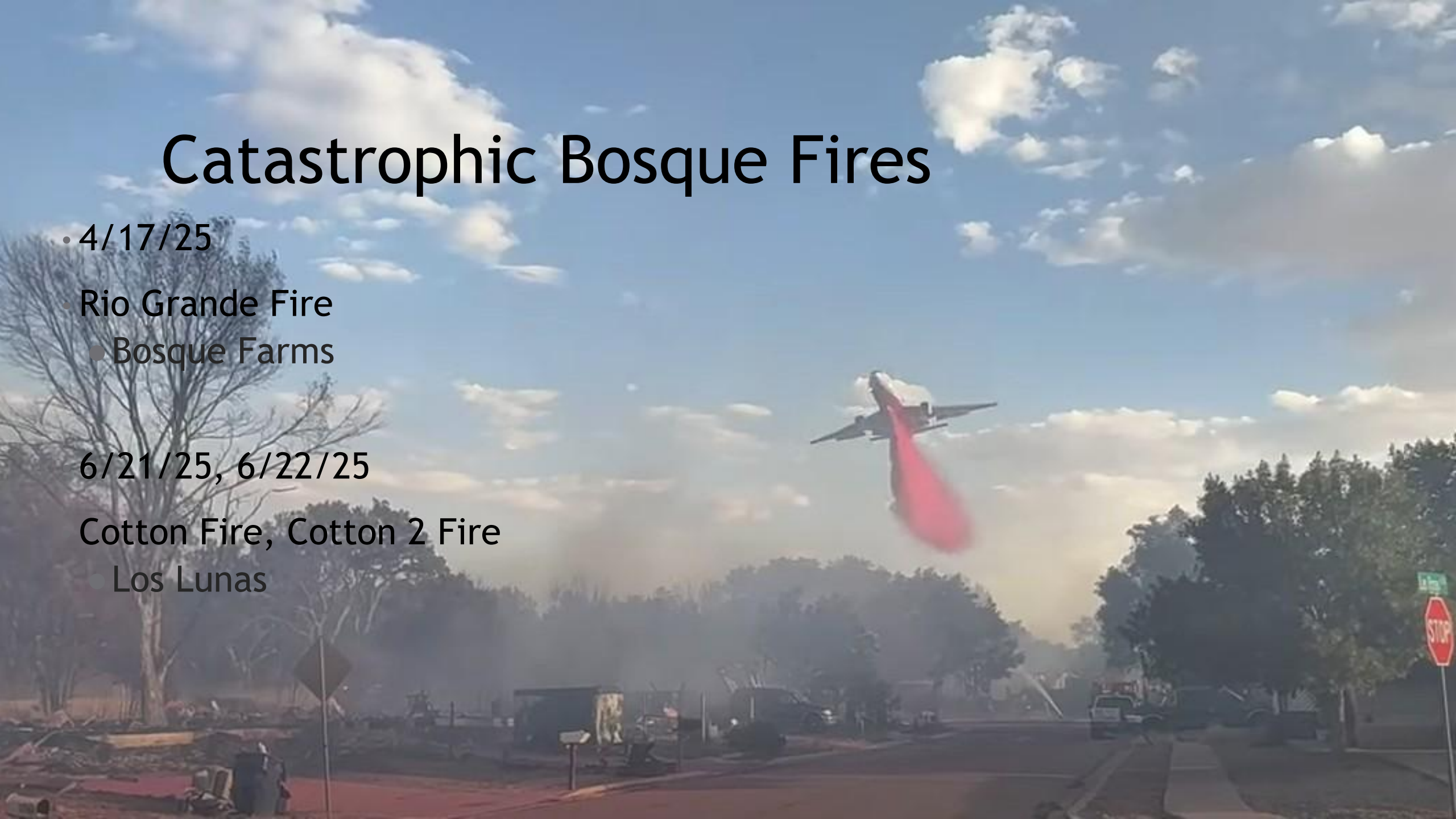
Catastrophic Bosque Fires

- 4/17/25
- Rio Grande Fire
 - Bosque Farms

6/21/25, 6/22/25

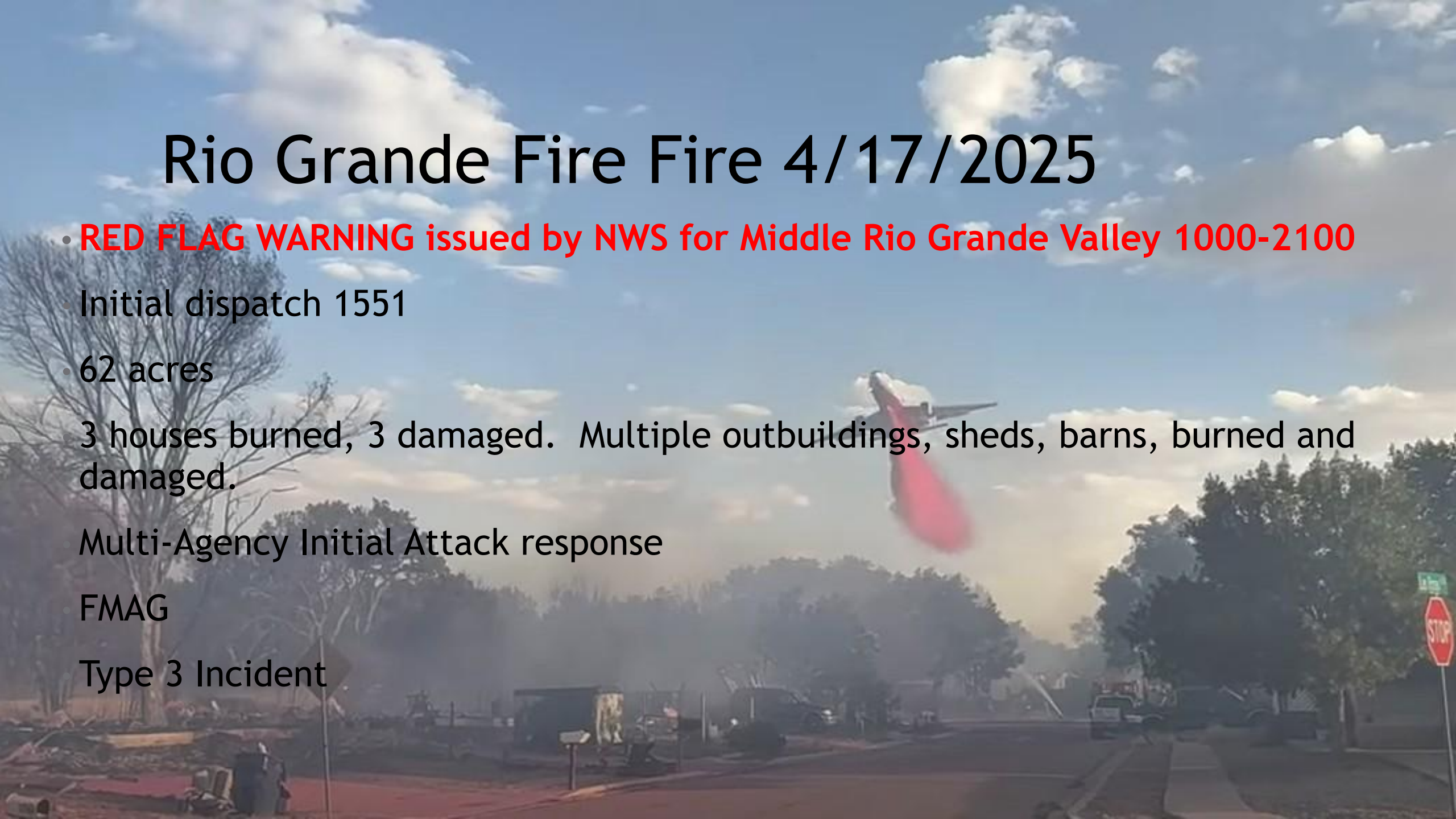
Cotton Fire, Cotton 2 Fire

- Los Lunas



Rio Grande Fire 4/17/2025

- **RED FLAG WARNING issued by NWS for Middle Rio Grande Valley 1000-2100**
- Initial dispatch 1551
- 62 acres
- 3 houses burned, 3 damaged. Multiple outbuildings, sheds, barns, burned and damaged.
- Multi-Agency Initial Attack response
- FMAG
- Type 3 Incident



Rio Grande

- **RED FLAG WARNING** issued
- Initial dispatch 1551

14:59 5G+ 90%

Los Chaves, New Mexico 3

NOW HOURLY 10 DAY MAPS

Belen Regional Airport 2:59 PM

83°F

Feels Like: 81°
Hi: 85° | Lo: 40°

Windy

Pull down to refresh data

John Rd 314

Wind 38

OBSERVATIONS All Stations >

Temperature	83°
Feels Like	81°
Hi Lo	85° 53°
Average	72° 41°
Yesterday	89° 52°
Dew Point	0°
Humidity	4%
Hi Lo	-% -%
Pressure	29.75" ↑

7/2025

Rio Grande Valley 1000-2100

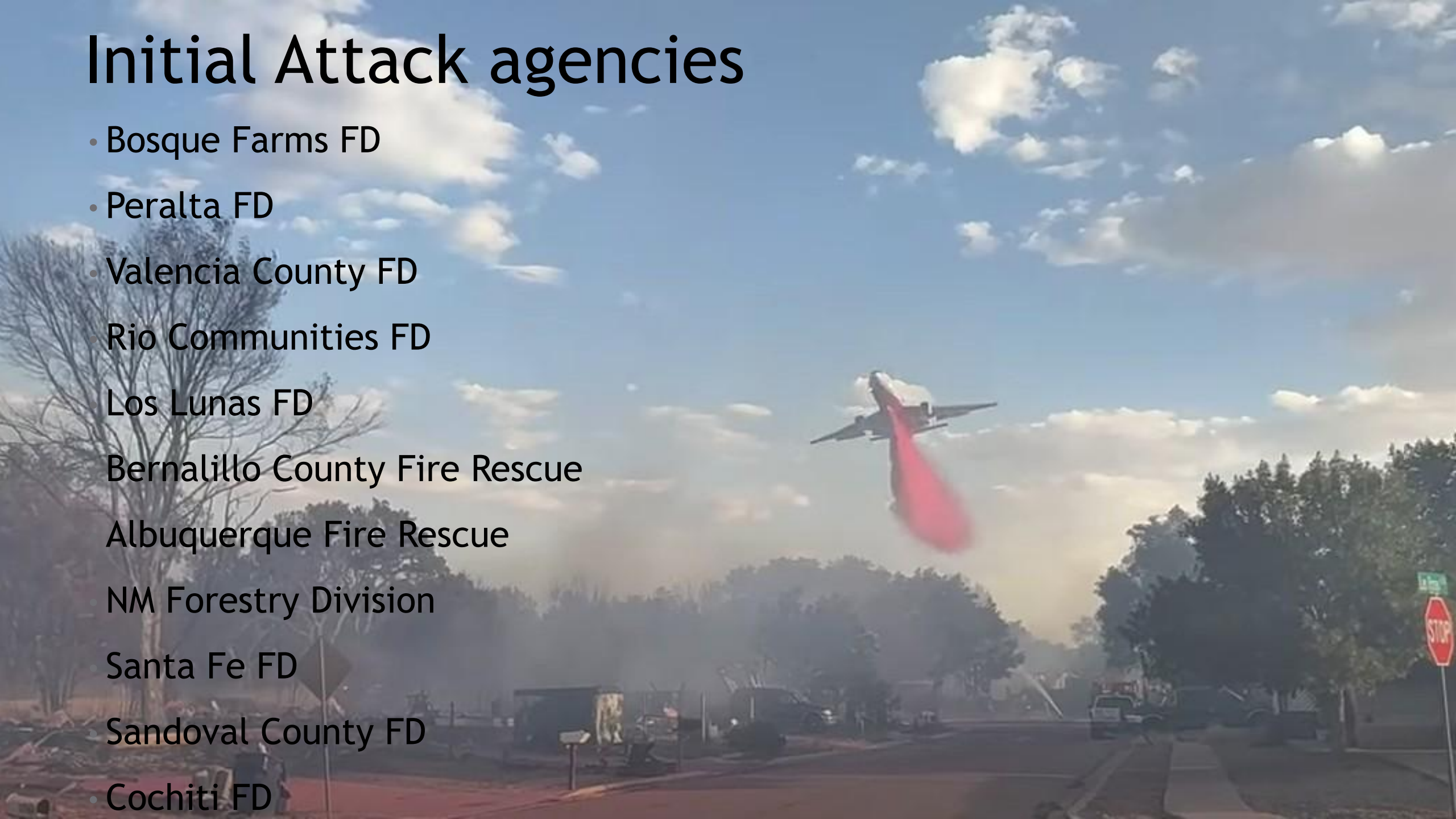
Fine Dead Fuel Moisture Content
3%

Probability of Ignition
90%

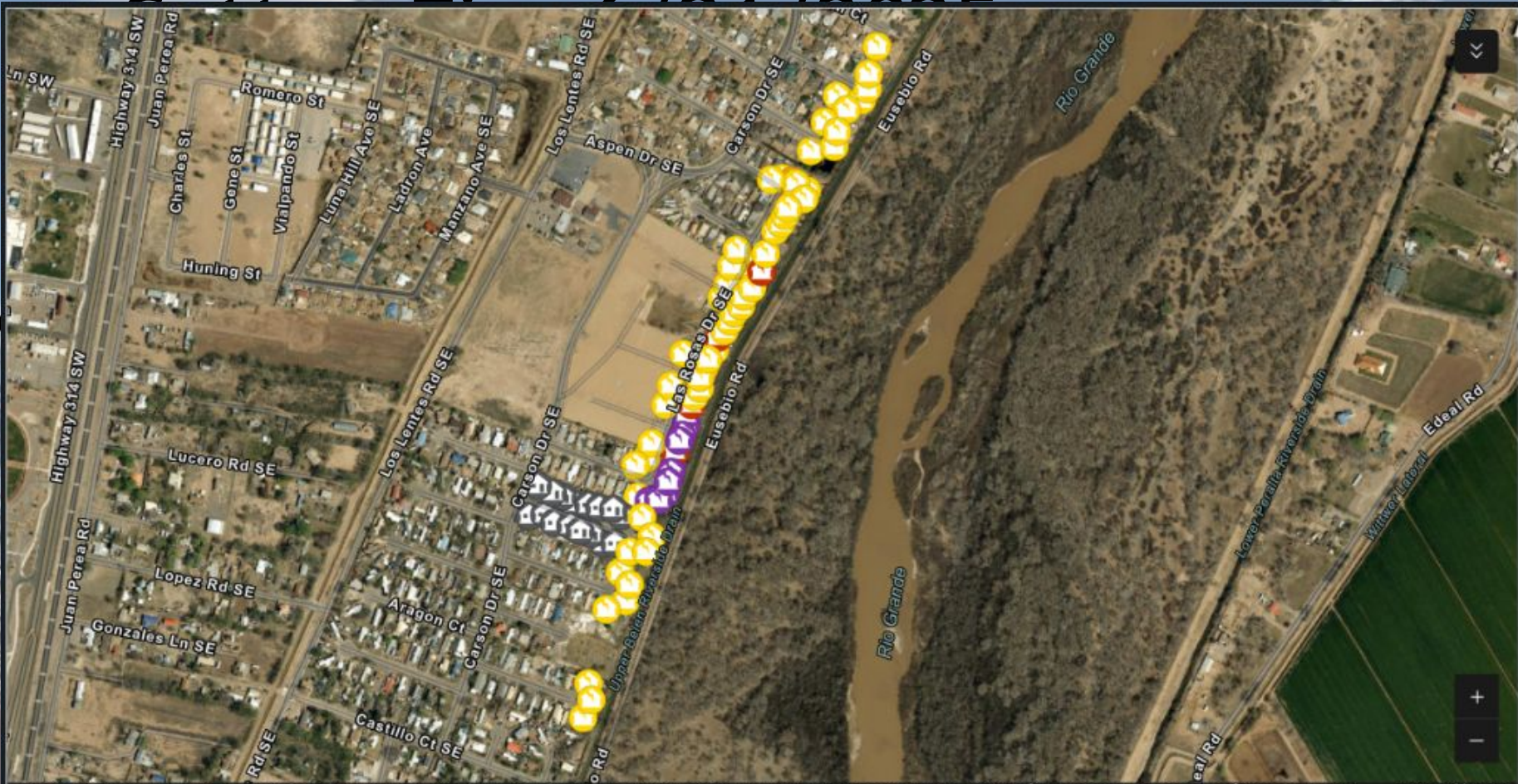


Initial Attack agencies





- Bosque Farms FD
- Peralta FD
- Valencia County FD
- Rio Communities FD
- Los Lunas FD
- Bernalillo County Fire Rescue
- Albuquerque Fire Rescue
- NM Forestry Division
- Santa Fe FD
- Sandoval County FD
- Cochiti FD







MRCOG-NM,BHI,BernCo GIS, Maxar | Esri | Esri Community Maps Contributors, New Mexico State University, © OpenStreetMap, Microsoft, Esri, TomTom, Garmin, SafeGraph, GeoTec... Powered by Esri

Destroyed	Major	Minor	Affected	Inaccessible	Unknown
 10	 4	 1	 57	No data	No data
13.9%	5.6%	1.4%	79.2%		

Impacted Units

72



Assessment Level: **affected**
Impacted Units: **1**
Last update: 6/23/2025, 12:59 PM
Submitted



Assessment Level: **affected**
Impacted Units: **1**
Last update: 6/23/2025, 12:59 PM
Submitted



Assessment Level: **affected**
Impacted Units: **1**
Last update: 6/23/2025, 12:59 PM
Submitted



Assessment Level: **affected**
Impacted Units: **1**
Last update: 6/23/2025, 12:59 PM
Submitted



Assessment Level: **affected**
Impacted Units: **1**
Last update: 6/23/2025, 12:40 PM
Submitted



Assessment Level: **affected**
Impacted Units: **1**
Last update: 6/23/2025, 12:38 PM
Submitted

Assessment Level: **affected**

Initial Attack agencies

- Los Lunas FD
- Valencia County FD
- Bosque Farms FD
- Peralta FD
- Rio Communities FD
- Bernalillo County Fire Rescue
- Albuquerque Fire Rescue
- NM Forestry Division
- US Forest Service - detailers
- Santa Fe FD
- Town of Bernalillo FD
- Cochiti FD





238

E

1st

STOP

Cotton 2 Fire

- 6/22/25 0930

- New Start, not related to Cotton Fire

- New FMAG

- Both fires named Desert Willow Complex

- Type 3 ad hoc team managed both fires

Extended attack resources from Cotton Fire used for initial attack plus incoming resources

Local Fire Departments engaged in structure protection efforts

Multiple spots outside the bosque. No values at risk damaged

144 acres

Fire Response Lessons Learned Rio Grande Fire and Desert Willow Complex

- Rio Grande Fire Lessons Learned Report
 - VCFD Assistant Chief Jaime Gonzales

Problems Encountered (as per AAR)

x	ICS Organization
x	Communications Failure
x	Training
x	Accountability
x	Allocation or Management of resources
x	Lack of Resources







F
A



Protecting your property

Here are some of the things that you can do to make your home more resistant to the flames or flying embers from a fire.

